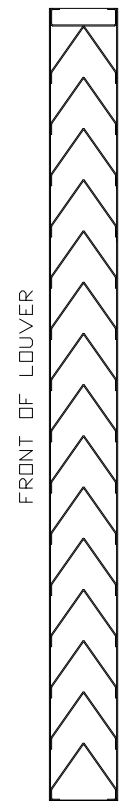


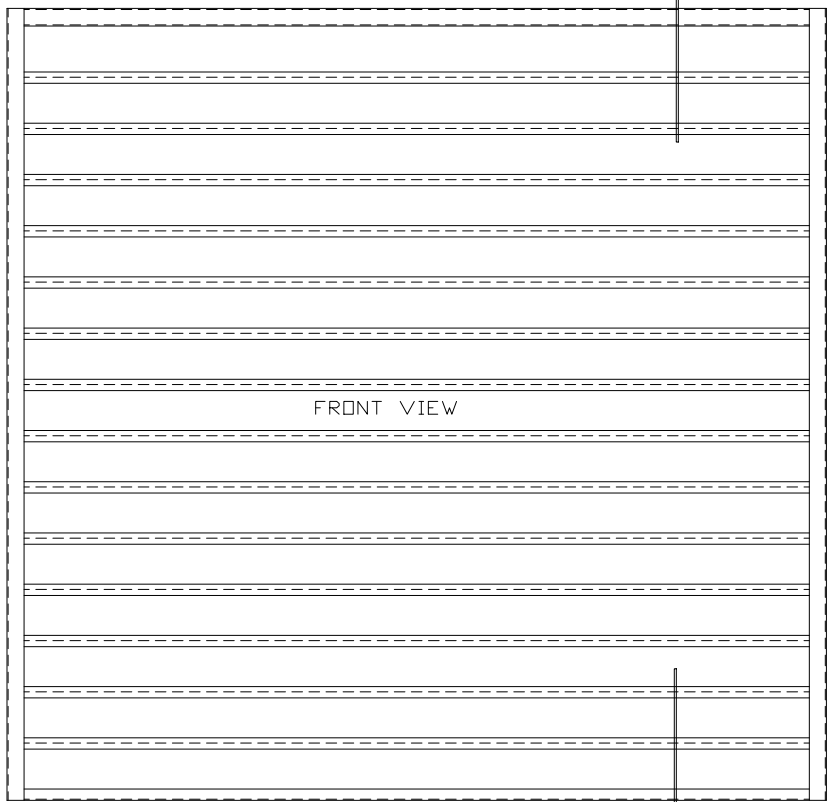


TOP VIEW

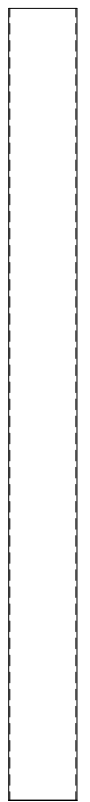
FRONT



SECTION A-A



FRONT VIEW

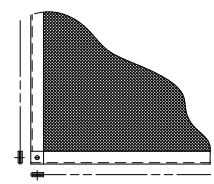


SIDE VIEW

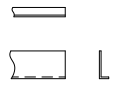
SPECIFICATIONS
 FRAMES: 18 GA. GALV. STEEL CHANNEL OR FLANGED TYPE.
 BLADES: 18 GA. GALV. STEEL.
 SCREEN: 1/2" MESH, 18 GA. GALV. .041" (WHEN INDICATED)
 CONSTRUCTION: RIVETED AND/OR WELDED FOR MAX. SERVICE.
OPTIONAL
 FRAMES & BLADES OF OTHER GAUGES.
 OTHER MATERIALS: STAINLESS STEEL, COPPER, ALUM., ETC.
 FINISHES: ENAMELS, EPDIES, ETC.
 SCREENS: INSECT SCREEN 18/14 ALUM. MESH
 1/2" FLATTENED ALUM., .051"
 1/4" SQ. MESH 18 GA. GALV., .047"
 1/2" SQ. MESH 18 GA. STAINLESS STEEL, .047"
 PLUS OTHERS.
 APPROX. LOUVER WEIGHT 10 LBS./SQ. FT.

ARROW LOUVER MODEL:
 FS-109
 SCALE: 1/4"=1'

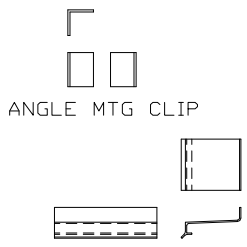
LOUVER ACCESSORIES



SCREEN



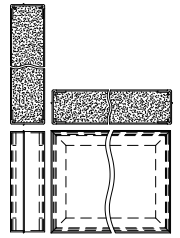
ADD-ON FLANGE



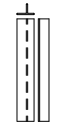
ANGLE MTG CLIP



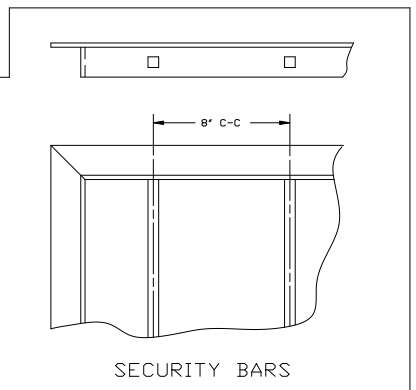
SILL EXTENSION




INSULATED BLANK-OFF



T-BAR



SECURITY BARS

 ARROW UNITED INDUSTRIES A Division of Mestek, Inc. 314 Riverside Drive - P.O. Box 69 - Wyalusing, PA 18853 AGENT:			
CUST.		MODEL FS-109 LOUVER	
CONTR.			
ARCH.			
P.O.		PROJECT	BIMS
DWN. MCT	DATE 3/17/09	ARROW JOB NO.	DWG. NO.
CKD.	EDR 14552	E-2000	39249
			SHT OF