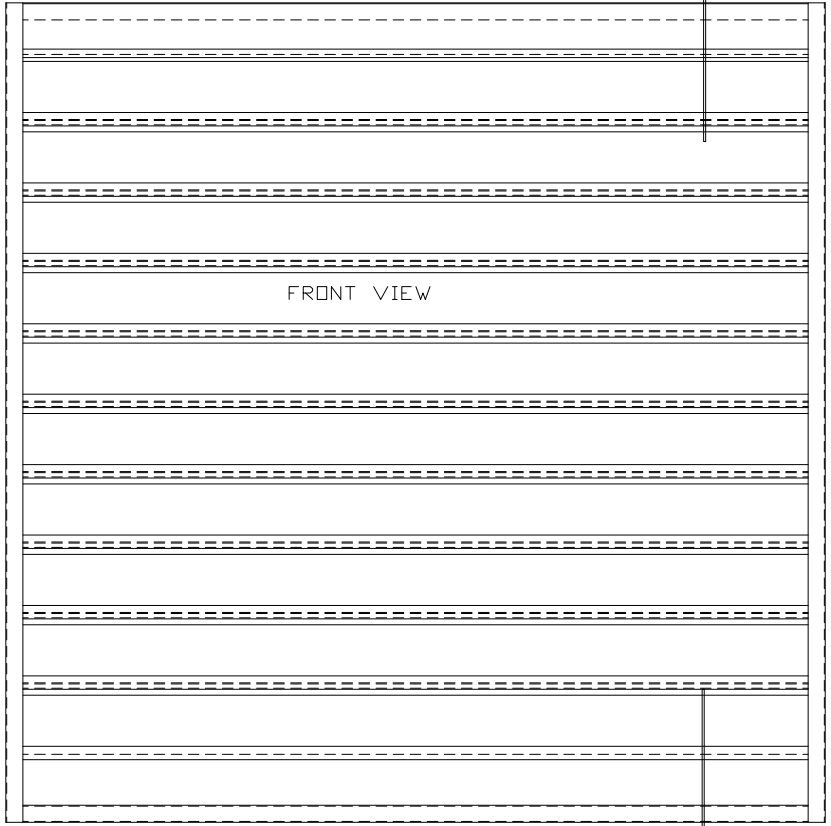




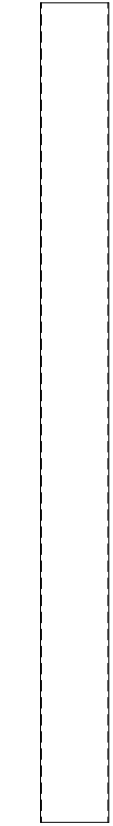
TOP VIEW

FRONT

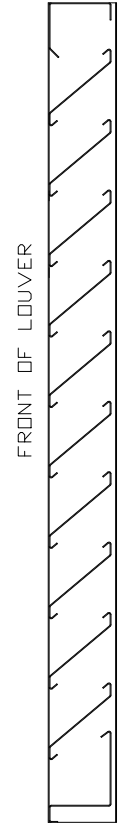
A ←



FRONT VIEW



SIDE VIEW



SECTION A-A

ARROW LOUVER MODEL:
FS-400
SCALE: 1/4"=1'

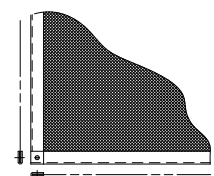
SPECIFICATIONS
 FRAME: 18 GA. GALVANIZED STEEL
 BLADES: 18 GA. GALVANIZED STEEL
 APPROXIMATE BLADE CENTERS 4 1/8"
 SCREEN: 1/2" SQ. MESH, 19 GA. GALVANIZED
 STEEL (.041") WHEN INDICATED
 CONSTRUCTION: RIVETED AND OR WELDED, FULL
 JAMBS WITH BLADES, HEAD AND
 SILL CONTAINED WITHIN.

FINISH: _____

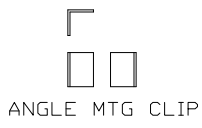
MINIMUM PANEL SIZE: 12' x 12'
 MAXIMUM SINGLE PANEL SIZE: 60' x 96'

LOUVER PERFORMANCE STATEMENT
 LOUVER MODEL FS-400 SHALL BE FABRICATED
 TO PROVIDE A MINIMUM OF (SIZ),
 8.11 SQUARE FEET OF FREE AREA FOR A
 48" x 48" SIZE LOUVER AND BEAR THE
 AMCA CERTIFIED RATINGS PROGRAM SEAL FOR
 AIR PERFORMANCE AND WATER PENETRATION.
 THE RATINGS SHALL SHOW A BEGINNING POINT
 OF WATER PENETRATION AT .01 INCHES PER
 SQUARE FOOT OF FREE AREA AT A FREE AREA
 VELOCITY OF 614 FEET PER MINUTE,
 (4980) CUBIC FEET PER MINUTE, WITH LESS
 THAN .07 INCHES WATER GAUGE PRESSURE DROP
 FOR AIR INTAKE.

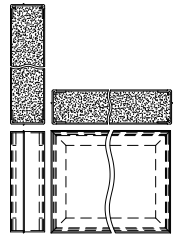
LOUVER ACCESSORIES



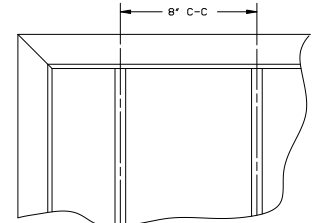
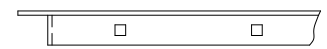
SCREEN




ANGLE MTG CLIP



INSULATED BLANK-OFF



SECURITY BARS

 ARROW UNITED INDUSTRIES A Division of Mestek, Inc. 314 Riverside Drive - P.O. Box 69 - Wyalusing, PA 18853		AGENT:	
		MODEL FS-400 LOUVER	
CONTR.		PROJECT	
ARCH.		BIMS	
DWN. MCT	DATE 3/17/09	ARROW JOB NO.	DWG. NO.
CKD.	EDR 14552	E-2000	39249
			SHT OF