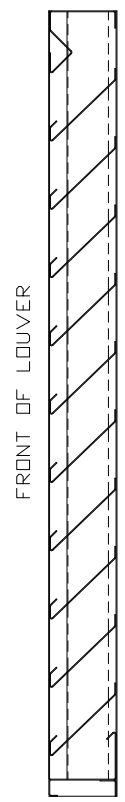
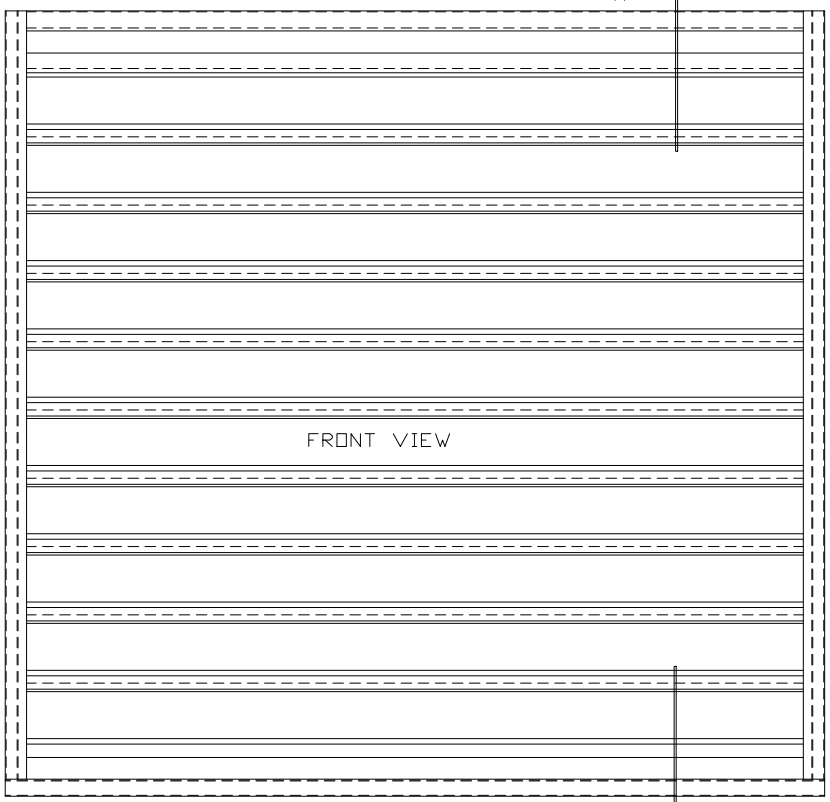




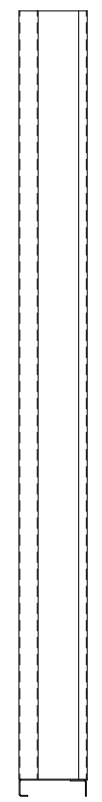
FRONT



FRONT OF LOUVER

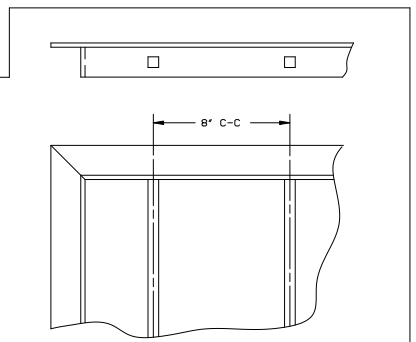
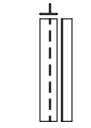
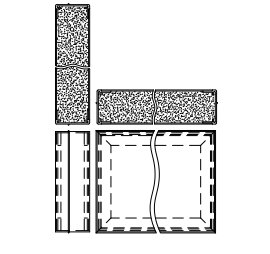
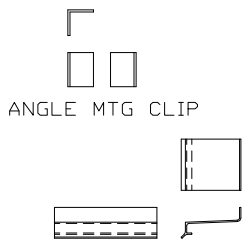
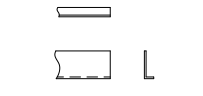
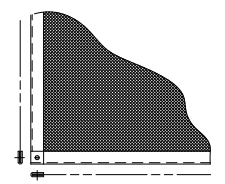


ARROW LOUVER MODEL:
FS-406-D
SCALE: 1/4"=1'



SPECIFICATIONS
 FRAME: 18 GA. GALVANIZED STEEL, CHANNEL
 BLADES: 18 GA. GALVANIZED STEEL
 APPROXIMATE BLADE CENTERS 4"
 SCREEN: 1/2" SQ. MESH, 19 GA. GALVANIZED STEEL
 (.041" WHEN INDICATED)
 CONSTRUCTION: RIVETED AND OR WELDED, FULL
 SILL WITH BLADES AND HEAD
 CONTAINED WITHIN.
 FINISH: _____
 MINIMUM PANEL SIZE: 12" x 12"
 MAXIMUM SINGLE PANEL SIZE: 60" x 96"
LOUVER PERFORMANCE STATEMENT
 LOUVER MODEL FS-406-D SHALL BE FABRICATED TO PROVIDE
 A MINIMUM OF (50%), 8.00 SQUARE FEET OF FREE AREA FOR
 A 48" x 48" SIZE LOUVER AND BEAR THE AMCA CERTIFIED
 RATINGS PROGRAM SEAL FOR AIR PERFORMANCE AND WATER
 PENETRATION. THE RATINGS SHALL SHOW A BEGINNING POINT
 OF WATER PENETRATION AT .01 DUNCES PER SQUARE FOOT OF
 FREE AREA AT A FREE AREA VELOCITY OF 997 FEET
 PER MINUTE, (7896) CUBIC FEET PER MINUTE, WITH
 .13 INCHES WATER GAUGE PRESSURE DROP FOR AIR INTAKE.

LOUVER ACCESSORIES



		ARROW UNITED INDUSTRIES A Division of Mestek, Inc. 314 Riverside Drive - P.O. Box 69 - Wyalusing, PA 18853 AGENT:	
		MODEL FS-406-D LOUVER	
CUST.		PROJECT	
CONTR.		BIMS	
ARCH.		ARROW JOB NO.	
DWN. MCT	DATE 3/17/09	ARRW JOB NO.	DWG. NO.
CKD.	EDR 14552	E-2000	39249
		SHT OF	