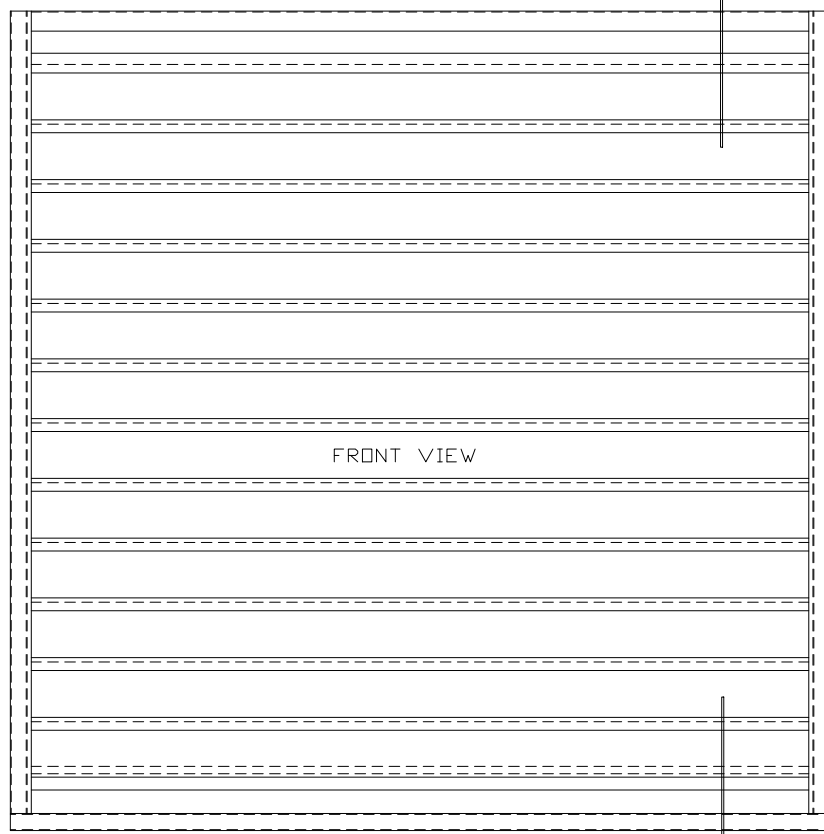


TOP VIEW

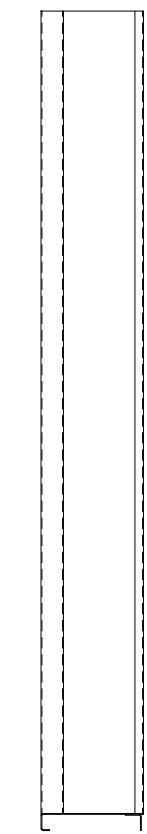
FRONT

A ←

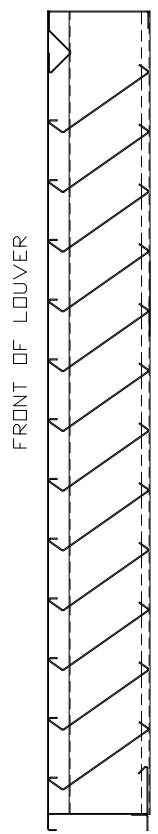


FRONT VIEW

A ←



SIDE VIEW



SECTION A-A

FRONT OF LOUVER

ARROW LOUVER MODEL:  
FS-615-D  
SCALE: 1/4"=1'

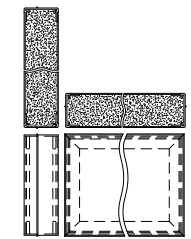
**SPECIFICATIONS**  
 FRAME: 18 GA. GALVANIZED STEEL  
 BLADES: 18 GA. GALVANIZED STEEL  
 APPROXIMATE BLADE CENTERS 3 1/2"  
 SCREEN: 1/2" SQ. MESH, 19 GA. GALVANIZED  
 STEEL (0.01") WHEN INDICATED  
 CONSTRUCTION: RIVETED AND DR WELDED, FULL  
 SILL WITH BLADES AND HEAD  
 CONTAINED WITHIN.

FINISH: \_\_\_\_\_

MINIMUM PANEL SIZE: 12" x 12"  
 MAXIMUM SINGLE PANEL SIZE: 60' x 96'

**LOUVER PERFORMANCE STATEMENT**  
 LOUVER MODEL FS-615-D SHALL BE FABRICATED  
 TO PROVIDE A MINIMUM OF (55%),  
 8.84 SQUARE FEET OF FREE AREA FOR A  
 48" x 48" SIZE LOUVER AND BEAR THE  
 APCA CERTIFIED RATINGS PROGRAM SEAL FOR  
 AIR PERFORMANCE AND WATER PENETRATION.  
 THE RATINGS SHALL SHOW A BEGINNING POINT  
 OF WATER PENETRATION AT .01 DUNCES PER  
 SQUARE FOOT OF FREE AREA TO BE ABOVE  
 (250 FPM, 11,050 CUBIC FEET PER MINUTE,  
 WITH LESS THAN .14 INCHES WATER GAUGE,  
 PRESSURE DROP AT 1000 FPM AIR INTAKE.

LOUVER ACCESSORIES



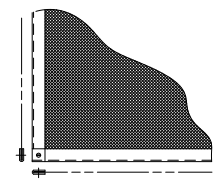
INSULATED BLANK-OFF



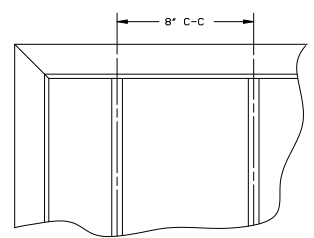
ANGLE MTG CLIP




SECURITY BARS



SCREEN



 <b>ARROW UNITED INDUSTRIES</b> A Division of Mestek, Inc. 314 Riverside Drive - P.O. Box 69 - Wyalusing, PA 18853 AGENT:		MODEL FS-615-D LOUVER	
		PROJECT	BIMS
DWN. MCT	DATE 3/17/09	ARROW JOB NO.	DWG. NO.
CKD.	EDR 14552	E-2000	39249
			SHT OF