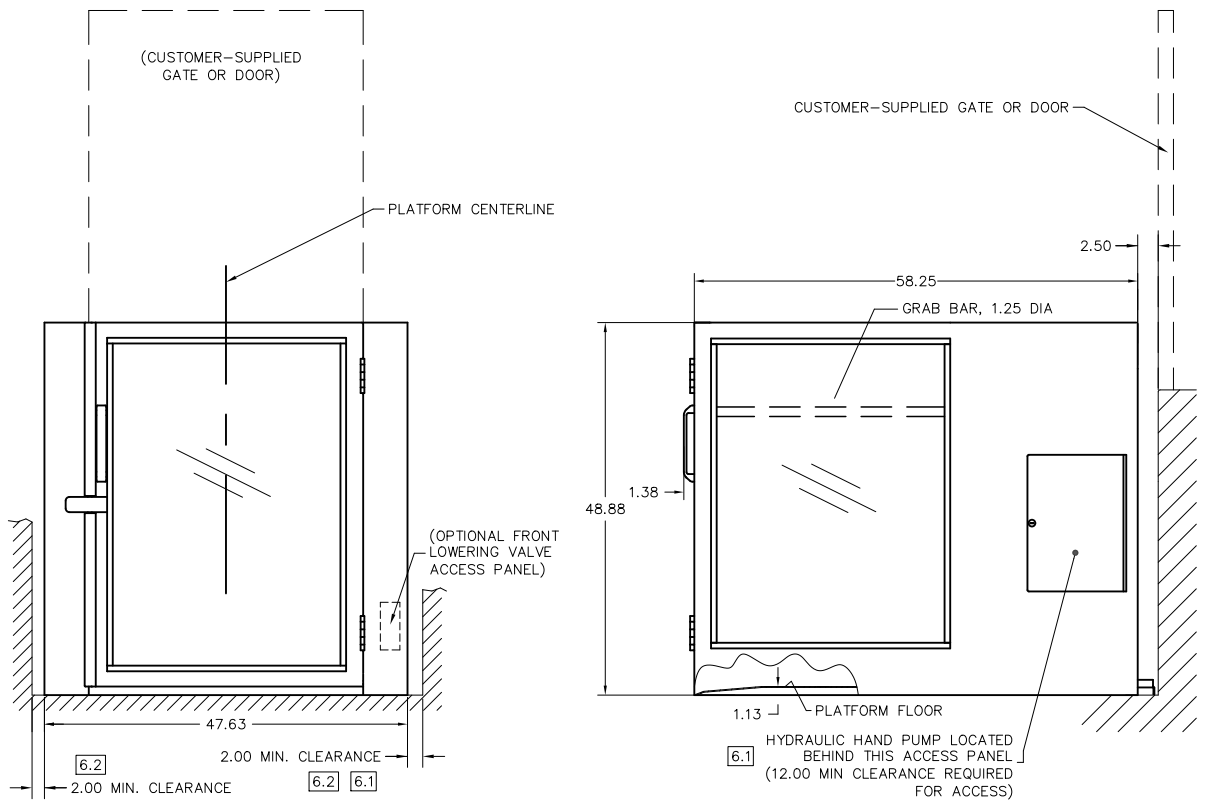


8 7 6 5 4 3 2 1

REVISIONS				
ZONE	LTR.	DESCRIPTION	DATE	APPROVED

NOTES UNLESS OTHERWISE SPECIFIED:

1. DESCRIPTION: ASCENSION PROTEGE 5442F MODEL SERIES VERTICAL WHEELCHAIR LIFT.
2. CHARACTERISTICS:
  - 2.1 OCCUPANCY: (1) PERSON.
  - 2.2 MAXIMUM LOAD: 900 POUNDS.
  - 2.3 AVERAGE VERTICAL SPEED: 5 FEET PER MINUTE.
  - 2.4 VERTICAL TRAVEL: 4 TO 42 INCHES.
  - 2.5 WEIGHT: 850 POUNDS.
  - 2.6 FINISH: BLACK POWDER COAT (CUSTOM COLOR AVAILABLE).
3. FEATURES:
  - 3.1 OPERATING MECHANISM: DIRECT-PLUNGER HYDRAULIC.
  - 3.2 MEETS PLATFORM SAFETY REQUIREMENTS PER ASME A18.1 §2.8.8.
  - 3.3 UNIT IS EQUIPPED WITH HAND PUMP FOR MANUAL OPERATION.
  - 3.4 FRONT GATE INTERLOCK PREVENTS OPERATION ABOVE 2" UNLESS GATE IS LOCKED. GATE ONLY UNLOCKS AT LOWER LANDING.
  - 3.5 GATE SENSORS PREVENT OPERATION UNLESS GATES ARE CLOSED.
  - 3.6 PLATFORM FLOOR IS SLIP-RESISTANT.
  - 3.7 UNIT IS EQUIPPED WITH EMERGENCY STOP BUTTON THAT, WHEN PRESSED, STOPS OPERATION OF THE LIFT AND SOUNDS AN ALARM.
4. ELECTRICAL & CONTROLS:
  - 4.1 120 VAC, 60 HZ, SINGLE PHASE, 15 AMP MINIMUM SERVICE LINE.
  - 4.2 ALL CONTROL CIRCUITS POWERED BY 24 VDC POWER SUPPLY.
  - 4.3 LANDING OPERATING CONTROLS PROVIDED IN 1.88" DEEP SINGLE GANG HANDY BOXES FOR REMOTE MOUNTING.
5. UNIT MEETS APPLICABLE REQUIREMENTS OF ADAAG, ASME 17.1 1996 OR OLDER, ASME A18.1, AND ANSI A117.1.
6. REQUIRED CLEARANCES:
  - 6.1 WHERE STANDBY POWER OR BATTERY BACKUP IS NOT PROVIDED, EITHER 12.00" MINIMUM CLEARANCE FOR HAND PUMP ACCESS SHALL BE PROVIDED OR FRONT LOWERING VALVE (FLV) OPTION SHALL BE SELECTED. CALIFORNIA REQUIRES BOTH HAND PUMP ACCESS (OR FLV) AND BATTERY BACKUP FOR ALL INSTALLATIONS.
  - 6.2 WHERE AN OBSTRUCTION OR SURFACE LOCATED WITHIN 12" OF PLATFORM PRESENTS A PINCHING, SHEARING, OR CRUSHING HAZARD, A SMOOTH CONTINUOUS SURFACE SHALL BE PROVIDED EXTENDING FROM THE LOWER LANDING TO 42" MINIMUM ABOVE UPPER LANDING.
- 6.3 MANEUVERING CLEARANCES IAW ADAAG SHALL BE PROVIDED AT EACH LANDING FOR BOTH ENTRANCES TO THE LIFT.
7. PROVISIONS BY OTHERS:
  - 7.1 FLOOR FLAT AND LEVEL WITHIN 1/2" AND CAPABLE OF SUPPORTING UNIT WEIGHT WITH RATED LOAD.
  - 7.2 STANDARD AND EMERGENCY LIGHTING.
  - 7.3 ANCHORS TO SECURE LIFT TO GROUND.
  - 7.4 CUSTOMER-SUPPLIED UPPER LANDING DOOR/GATE (SPECIFICATIONS ON SHEET 4).
8. STANDARD GATE HINGING SHOWN; MIRROR GATES AND DIMENSIONS ABOUT PLATFORM CENTERLINE FOR OTHER HINGE CONFIGURATIONS.



FRONT END ELEVATION [8]

RIGHT SIDE ELEVATION

SEE SHEET 3

ASCENSION P/N: \_\_\_\_\_

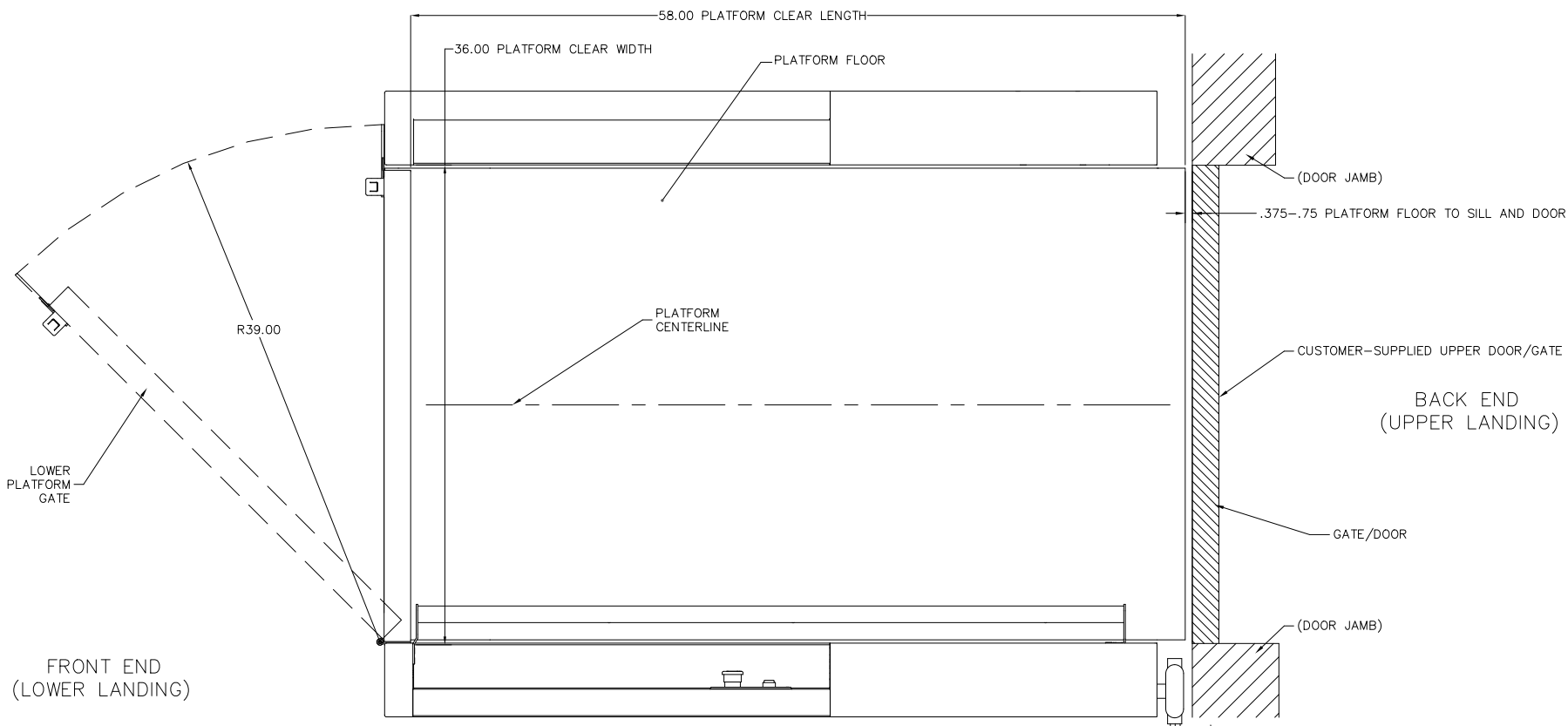
INTERPRET DIMENSIONS AND TOLERANCES IAW ASME Y14.5M-1992 UNLESS OTHERWISE SPECIFIED DIMENSIONS ARE IN INCHES DECIMALS: .XX .XXX ANGLES: 0.5°		CONTRACT NO. _____ DATE 12-6-18 DRAWN BY S. APPLEBY CHECKED BY _____ APPROVED (By Philip Brobeck at 12:13 pm, Dec 06, 2018) DO NOT SCALE DRAWING	<b>CGM CONTAINER CONTROLS, INC.</b> P.O. BOX 40020 - TUCSON, ARIZONA 85717-0020 <b>PROTEGE 5442FX MODEL SERIES WHEELCHAIR LIFT</b>
PART NO. _____ QTY. PER ASSY. _____ NEXT FINAL _____ NEXT ASSY. _____ USED ON _____ APPLICATION _____	SIMILAR TO _____ ACT. WT. _____ CALC. WT. _____	MANUFACTURING _____ SYSTEMS _____	SIZE D FSCM NO. 08992 DWG. NO. PROTEGE 5442FX SCALE 1/8" = 1'-0" RELEASE-BANK _____ SHEET 1 OF 4

8 7 6 5 4 3 2 1

REVISIONS				
ZONE	LTR.	DESCRIPTION	DATE	APPROVED

D  
C  
B  
A

D  
C  
B  
A



ALL CONDUCTORS ROUTED INTO LIFT BASE AT GROUND LEVEL.  
 3-CONDUCTOR 120 VAC SUPPLY TO BE PROVIDED BY OTHERS.  
 3-CONDUCTOR 24 VDC CONTROL AND SIGNAL TO BE PROVIDED BY OTHERS FOR LOWER LANDING OPERATING CONTROLS.  
 9-CONDUCTOR 24V DC CONTROL AND SIGNAL FOR UPPER LANDING OPERATING CONTROLS, 12'0" MINIMUM TO BE PROVIDED BY ASCENSION.

PLAN VIEW

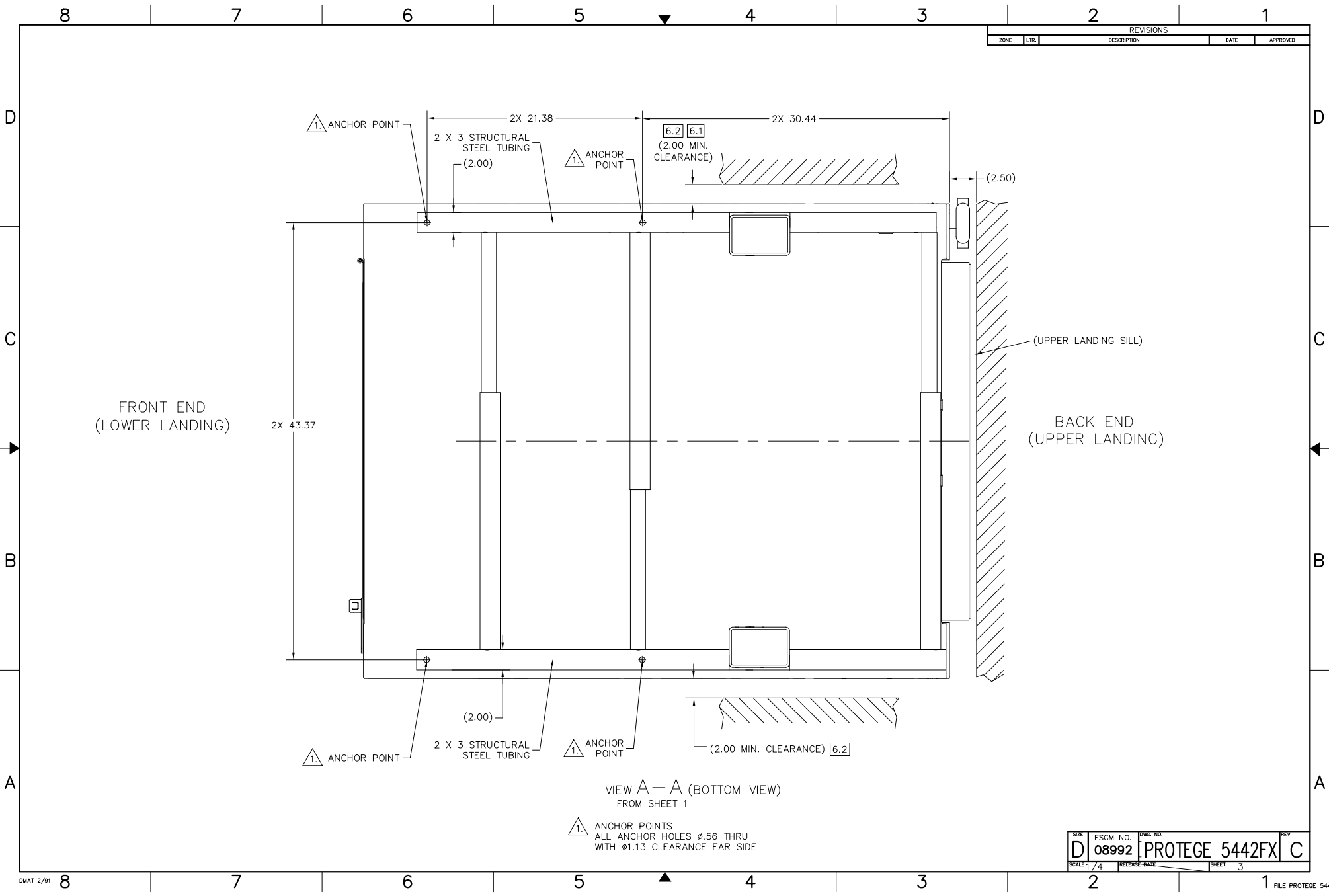
GATE HINGE CONFIGURATIONS:  8

- 1. STANDARD GATE HINGING: ALL GATES AS SHOWN.
- 2. OPPOSITE-HINGED LOWER PLATFORM GATE: MIRROR LOWER PLATFORM GATE ABOUT PLATFORM CENTERLINE.

SIZE <b>D</b>	FSCM NO. <b>08992</b>	DWG. NO. <b>PROTEGE 5442FX</b>	REV <b>C</b>
SCALE 1/4	RELEASE DATE	SHEET 2	FILE PROTEGE 5442FX

DMAT 2/91 8 7 6 5 4 3 2 1

REVISIONS				
ZONE	LTR.	DESCRIPTION	DATE	APPROVED



VIEW A-A (BOTTOM VIEW)  
FROM SHEET 1

ANCHOR POINTS  
ALL ANCHOR HOLES Ø.56 THRU  
WITH Ø1.13 CLEARANCE FAR SIDE

SIZE <b>D</b>	FSCM NO. <b>08992</b>	DWG. NO. <b>PROTEGE 5442FX</b>	REV <b>C</b>
SCALE 1/4	RELEASE DATE	SHEET 3	FILE PROTEGE 5442FX

8 7 6 5 4 3 2 1

REVISIONS				
ZONE	LTR.	DESCRIPTION	DATE	APPROVED

D

ADDITIONAL SPECIFICATIONS FOR UPPER LANDING GATE/DOOR BY OTHERS

GATES/DOORS MUST COMPLY WITH ASME A18.1 AND ALL OTHER APPLICABLE CODES AS REQUIRED BY AHJ.

THE FOLLOWING LIST IS FOR REFERENCE ONLY AND IS PROVIDED AS A CONVENIENCE TO AID SUCCESSFUL LIFT SPECIFICATION.

1. UPPER LANDING GATE/DOOR SHALL MEET THE FOLLOWING SPECIFICATIONS:
  - 1.1 AT LEAST 42" HIGH.
  - 1.2 SELF-CLOSING.
  - 1.3 FLUSH WITH EDGE OF SILL.
  - 1.4 UNPERFORATED CONSTRUCTION.
  - 1.5 ABLE TO WITHSTAND 125 POUNDS FORCE APPLIED TO ANY 4"x4" AREA WITHOUT PERMANENT DEFORMATION.
  - 1.6 HANDLE FACES AWAY FROM LIFT LOCATION. NO HANDLE PERMITTED ON LIFT SIDE OF DOOR.
  - 1.7 HANDLE, KNOB, OR OTHER MANUAL OPERATION DEVICE SHALL BE CAPABLE OF BEING LEFT IN A LOCKED POSITION, PREVENTING THE OPERATION OF THE DOOR LATCH. UNDER NORMAL CONDITIONS, THE DOOR SHALL NOT BE CAPABLE OF BEING OPENED UNLESS ELECTRIC STRIKE IS IN "UNLOCK" POSITION.
  
2. CUSTOMER-SUPPLIED GATE/DOOR SHALL BE EQUIPPED WITH AN ELECTRIC STRIKE THAT MEETS THE FOLLOWING SPECIFICATIONS:
  - 2.1 OPERATES ON 24 VDC WITH AT MOST 1 AMP CURRENT DRAW.
  - 2.2 FAIL-SECURE OPERATION (LOCKED WHEN POWER IS DISCONNECTED).
  - 2.3 ABLE TO WITHSTAND 125 POUNDS FORCE APPLIED TO THE LOCK IN THE OPENING DIRECTION.
  - 2.4 WHEN UNLOCKED, SHALL ALLOW DOOR TO BE FREELY PUSHED OPEN WITHOUT OPERATING A HANDLE, KNOB, OR OTHER DEVICE.
  - 2.5 CONTAINS TWO MONITORING SWITCHES:
    - SWITCH 1: CIRCUIT IS CLOSED WHEN GATE/DOOR IS IN CLOSED POSITION.
    - SWITCH 2: CIRCUIT IS CLOSED WHEN LOCK IS ENGAGED.
  - 2.6 IF INSTALLED IN A JURISDICTION WHERE ASME A18.1-2011 OR LATER IS IN EFFECT, LOCK MODEL MUST BE CERTIFIED TO TESTING REQUIREMENTS DETAILED IN SECTION 9.9 OF THAT CODE.
  
3. THERE SHALL BE A SMOOTH WALL OR FASCIA EXTENDING FROM THE UPPER LANDING SILL TO THE LEVEL OF THE LOWER LANDING. THE FASCIA SHALL BE CAPABLE OF WITHSTANDING A FORCE OF 125 POUNDS APPLIED TO ANY 4"x4" AREA WITHOUT PERMANENT DEFORMATION.

C

B

A

D

C

B

A

SIZE	FSCM NO.	DWG. NO.	REV
D	08992	PROTEGE 5442FX	C
SCALE	1/4	RELEASE-BANK	SHEET 4

DMAT 2/01 8 7 6 5 4 3 2 1 FILE PROTEGE 5442FX