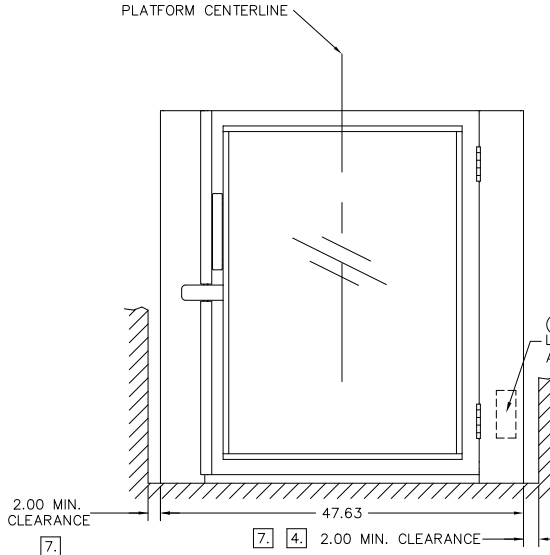


THIS DOCUMENT CONTAINS PROPRIETARY INFORMATION AND EXCEPT WITH WRITTEN PERMISSION BY AGM CONTAINER CONTROLS, INC. SUCH INFORMATION SHALL NOT BE PUBLISHED, DISCLOSED TO OTHERS OR USED FOR ANY PURPOSE AND THE DOCUMENT SHALL NOT BE DUPLICATED IN WHOLE OR IN PART.

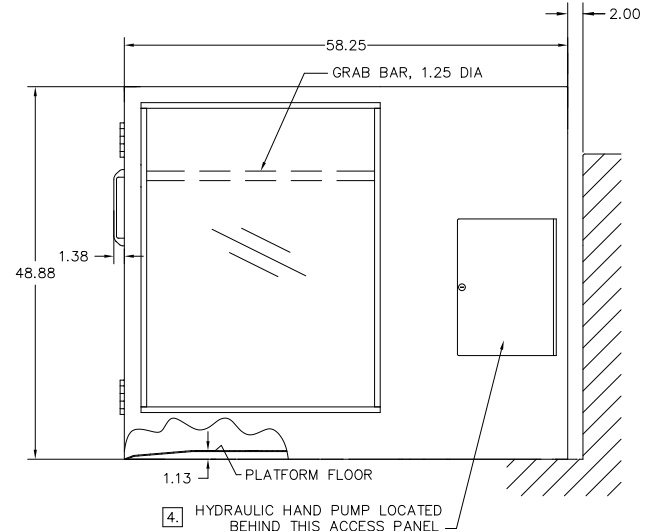
REVISIONS				
ZONE	LTR.	DESCRIPTION	DATE	APPROVED

NOTES UNLESS OTHERWISE SPECIFIED:

1. DESCRIPTION: ASCENSION PROTEGE 5442F MODEL SERIES VERTICAL WHEELCHAIR LIFT
2. ELECTRICAL & CONTROLS:
  - 2.1 120 VAC, 60 HZ, SINGLE PHASE, 15 AMP MINIMUM SERVICE LINE.
  - 2.2 LANDING OPERATING CONTROLS PROVIDED IN 1.88" DEEP SINGLE GANG HANDY BOX FOR REMOTE MOUNTING.
  - 2.3 ALL CONTROL CIRCUITS POWERED BY 24 VDC POWER SUPPLY.
3. LIGHTING: STANDARD AND EMERGENCY LIGHTING TO BE PROVIDED BY OTHERS.
4. (SHEETS 1 & 3) INDICATED MINIMUM CLEARANCE (ON RIGHT SIDE ONLY) SHALL BE INCREASED TO 13.00" FOR HAND PUMP ACCESS WHERE STANDBY POWER OR BATTERY BACKUP IS NOT PROVIDED, AND FOR ALL INSTALLATIONS IN CALIFORNIA. OMIT THIS REQUIREMENT WHEN FRONT LOWERING VALVE OPTION IS SELECTED.
5. REINFORCED CONCRETE SLAB REQUIRED, 4" THICK, 3500 PSI, FLAT AND LEVEL WITHIN 1/2".
6. ANCHORS TO BE PROVIDED BY INSTALLER.
7. WHERE AN OBSTRUCTION OR SURFACE LOCATED WITHIN 12" OF PLATFORM PRESENTS A PINCHING, SHEARING, OR CRUSHING HAZARD, A SMOOTH CONTINUOUS SURFACE SHALL BE PROVIDED EXTENDING FROM LOWER LANDING TO 42" MINIMUM ABOVE UPPER LANDING.



FRONT END ELEVATION



RIGHT SIDE ELEVATION

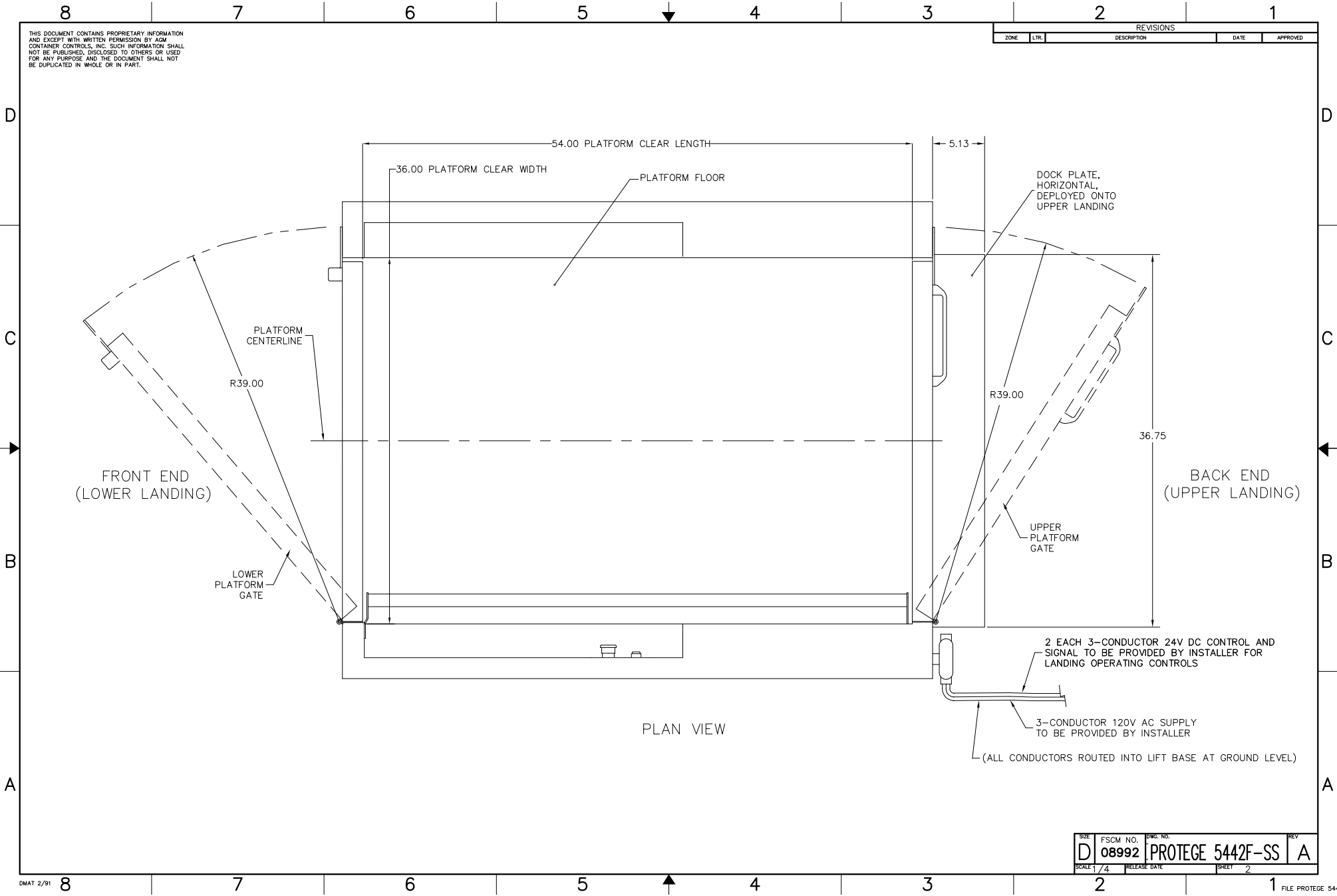
SEE SHEET 3

ASCENSION P/N: \_\_\_\_\_

INTERPRET DIMENSIONS AND TOLERANCES IN INCHES AND DECIMALS UNLESS OTHERWISE SPECIFIED TOLERANCES: .XX ±.25, .XXX ±.030 ANGLES: 2.5° DO NOT SCALE DRAWING UNLESS OTHERWISE SPECIFIED DIMENSIONS ARE IN INCHES		CONTRACT DRAWN: B. KOOMAR CHECKED: E. ZUERCHER APPROVED: E. ZUERCHER DATE: 1-9-12 DATE: 1-18-12 DATE: 1-18-12	TITLE <b>PROTEGE 5442F MODEL SERIES WHEELCHAIR LIFT</b>
PART NO. / NEXT FINAL / QTY. / SEC'S PER ASSY. / NEXT ASSY. / USED ON / APPLICATION		SCALE: 1/8" = 1'-0" RELEASE-BANK	FSCM NO. 08992 DWG. NO. PROTEGE 5442F-SS REV. A SHEET 1 OF 3

THIS DOCUMENT CONTAINS PROPRIETARY INFORMATION AND EXCEPT WITH WRITTEN PERMISSION BY AGM CONTAINER CONTROLS, INC. SUCH INFORMATION SHALL NOT BE PUBLISHED, DISCLOSED TO OTHERS OR USED FOR ANY PURPOSE AND THE DOCUMENT SHALL NOT BE DUPLICATED IN WHOLE OR IN PART.

REVISIONS				
ZONE	LTR.	DESCRIPTION	DATE	APPROVED

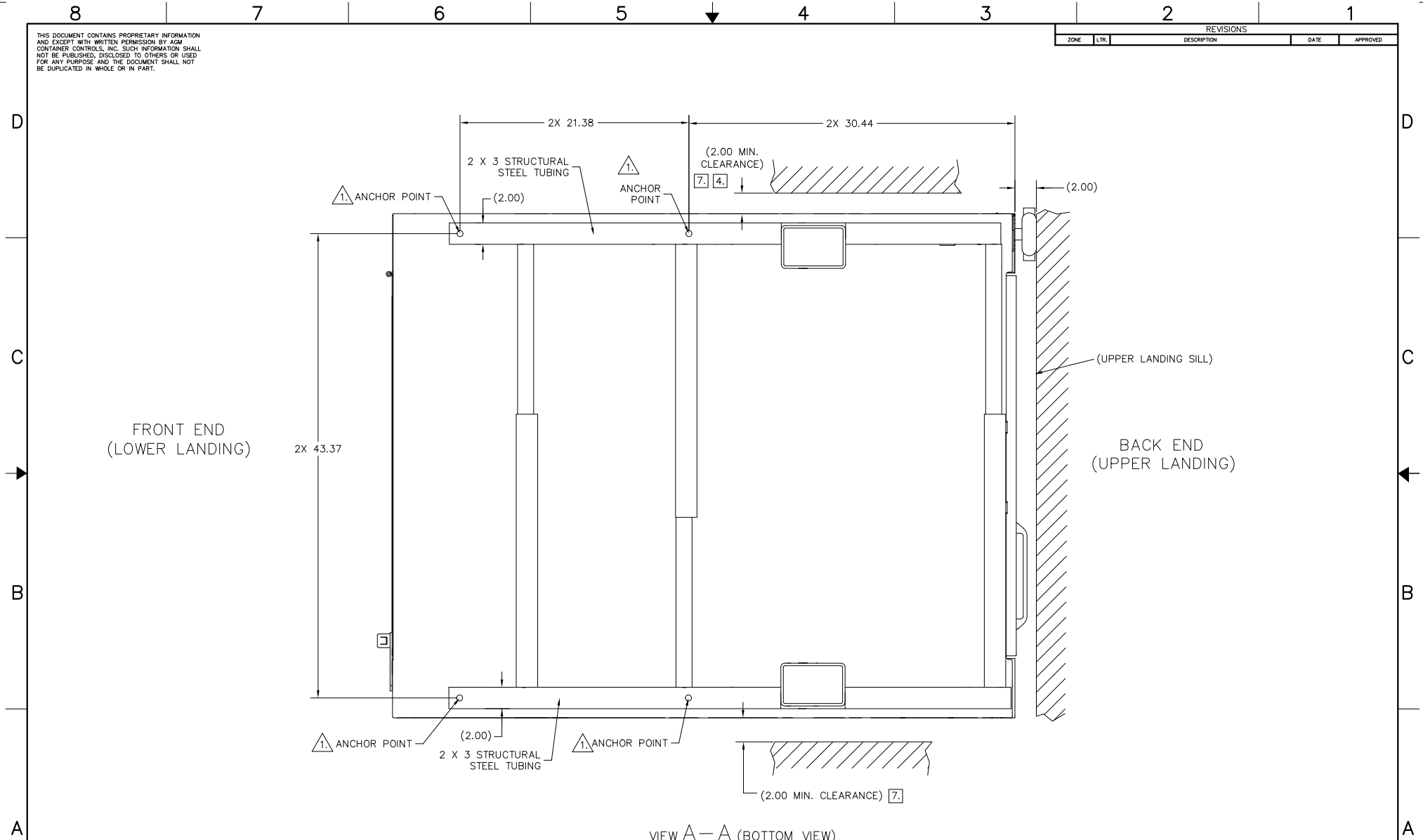


PLAN VIEW

SIZE D	FSCM NO. 08992	DWG. NO. PROTEGE 5442F-SS	REV A
SCALE 1/4	RELEASE DATE	SHEET 2	FILE PROTEGE 5442F

THIS DOCUMENT CONTAINS PROPRIETARY INFORMATION AND EXCEPT WITH WRITTEN PERMISSION BY AGM CONTAINER CONTROLS, INC. SUCH INFORMATION SHALL NOT BE PUBLISHED, DISCLOSED TO OTHERS OR USED FOR ANY PURPOSE AND THE DOCUMENT SHALL NOT BE DUPLICATED IN WHOLE OR IN PART.

REVISIONS				
ZONE	LTR.	DESCRIPTION	DATE	APPROVED



1. ANCHOR POINTS  
ALL ANCHOR HOLES  $\phi$ .56 THRU  
WITH  $\phi$ 1.13 CLEARANCE FAR SIDE

SIZE D	FSCM NO. 08992	DWG. NO. PROTEGE 5442F-SS	REV —
SCALE 1/4	RELEASE DATE	SHEET 3	FILE PROTEGE 5442F