

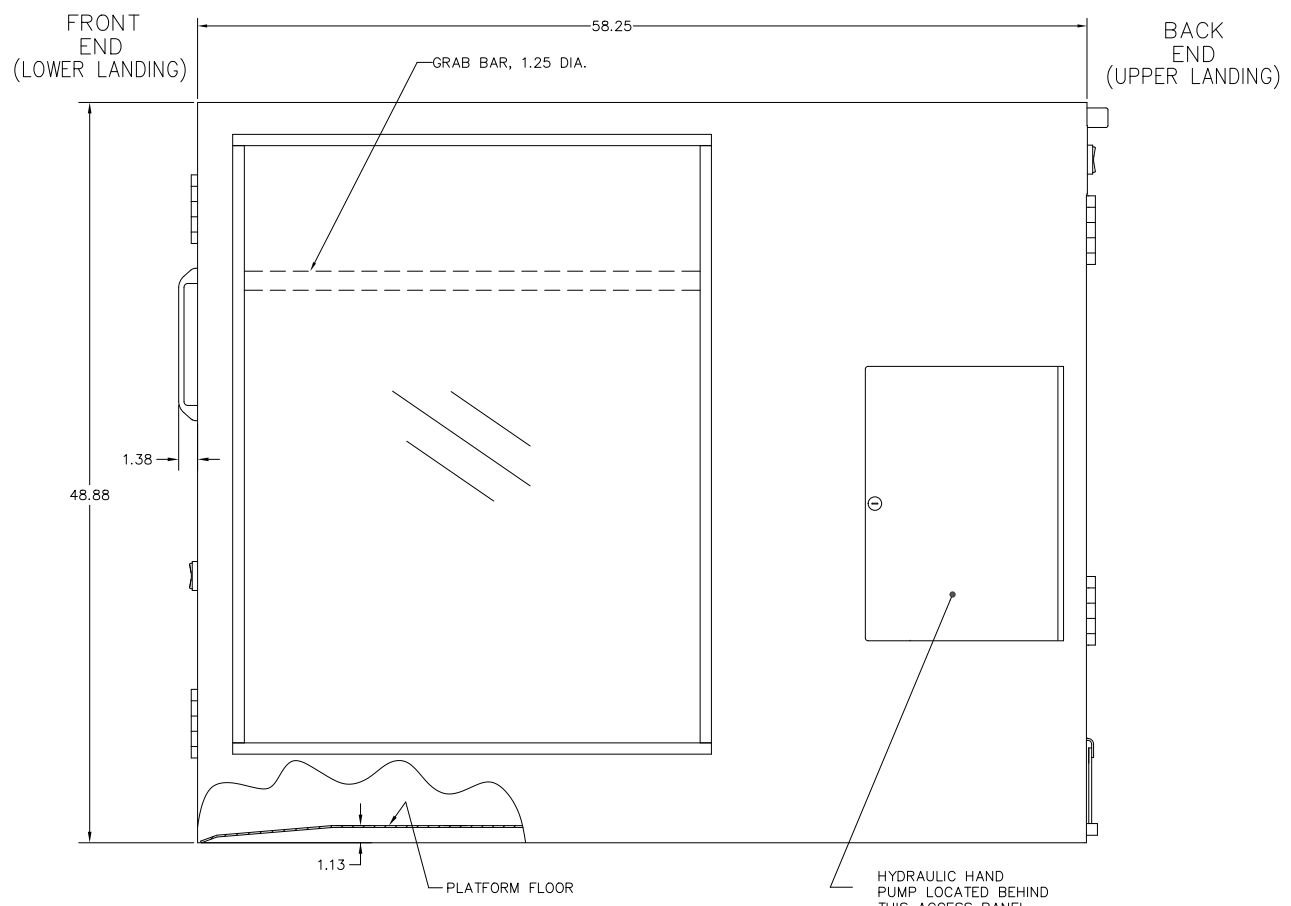
THIS DOCUMENT CONTAINS PROPRIETARY INFORMATION AND EXCEPT WITH WRITTEN PERMISSION BY AGM CONTAINER CONTROLS, INC. SUCH INFORMATION SHALL NOT BE PUBLISHED, DISCLOSED TO OTHERS OR USED FOR ANY PURPOSE AND THE DOCUMENT SHALL NOT BE DUPLICATED IN WHOLE OR IN PART.

REVISIONS				
ZONE	LTR.	DESCRIPTION	DATE	APPROVED

D
C
B
A

8 7 6 5 4 3 2 1

- NOTES UNLESS OTHERWISE SPECIFIED:
- DESCRIPTION: PORTABLE WHEELCHAIR LIFT, MODEL PROTEGE 5442P.
 - CHARACTERISTICS:
 - WEIGHT: 850 POUNDS.
 - MATERIALS:
 - BASE, PLATFORM, GUIDE RAILS: ASTM A36 OR AISI 1018-1020 STEEL.
 - DOCK PLATE, SHEETMETAL AND SAFETY UNDERPAN: ALUMINUM ALLOY.
 - WINDOWS: TRANSPARENT HIGH IMPACT THERMOPLASTIC.
 - FINISH:
 - BASE: HOT-DIP GALVANIZED.
 - PLATFORM: POWDER COATED, COLOR BLACK (-1), OR OPTIONAL COLOR (-99).
 - OPERATION:
 - OCCUPANCY: (1) PERSON.
 - MAXIMUM LOAD: 900 POUNDS.
 - AVERAGE VERTICAL SPEED: 5 FEET PER MINUTE.
 - VERTICAL TRAVEL: 4 TO 42 INCHES.
 - FEATURES:
 - OPERATING MECHANISM: DIRECT-PLUNGER HYDRAULIC.
 - UNIT IS EQUIPPED WITH REMOVABLE WHEELS.
 - UNIT IS EQUIPPED WITH MANUAL HAND PUMP FOR EMERGENCY OPERATION AND/OR WHEEL INSTALLATION.
 - FRONT GATE INTERLOCK PREVENTS OPENING UNLESS PLATFORM IS AT LOWER LANDING.
 - FRONT GATE INTERLOCK PREVENTS PLATFORM FROM MOVING MORE THAN 2 INCHES FROM LOWER LANDING UNLESS FRONT GATE IS LOCKED.
 - GATE SENSORS PREVENT OPERATION UNLESS GATES ARE CLOSED.
 - PLATFORM FLOOR AND DOCK PLATE SURFACES ARE SLIP-RESISTANT.
 - DOCK PLATE IS TETHERED TO BACK GATE.
 - ELECTRICAL:
 - 120 VAC, 60 HZ, SINGLE PHASE, 15 AMP.
 - 20' LONG POWER CORD WITH STANDARD (3) PRONG GROUNDED PLUG AND GROUND FAULT CIRCUIT INTERRUPTER (GFCI).
 - ALL CONTROL CIRCUITS POWERED BY 24 VDC POWER SUPPLY.
 - UNIT MEETS APPLICABLE REQUIREMENTS OF ADAAG, ASME 17.1 1996 OR OLDER, ASME A18.1, AND ANSI A117.1, AS THEY WOULD APPLY TO A PORTABLE LIFTING DEVICE.



PART NO.	COLOR
PROTEGE 5442P-1	BLACK
PROTEGE 5442P-99	OPTIONAL

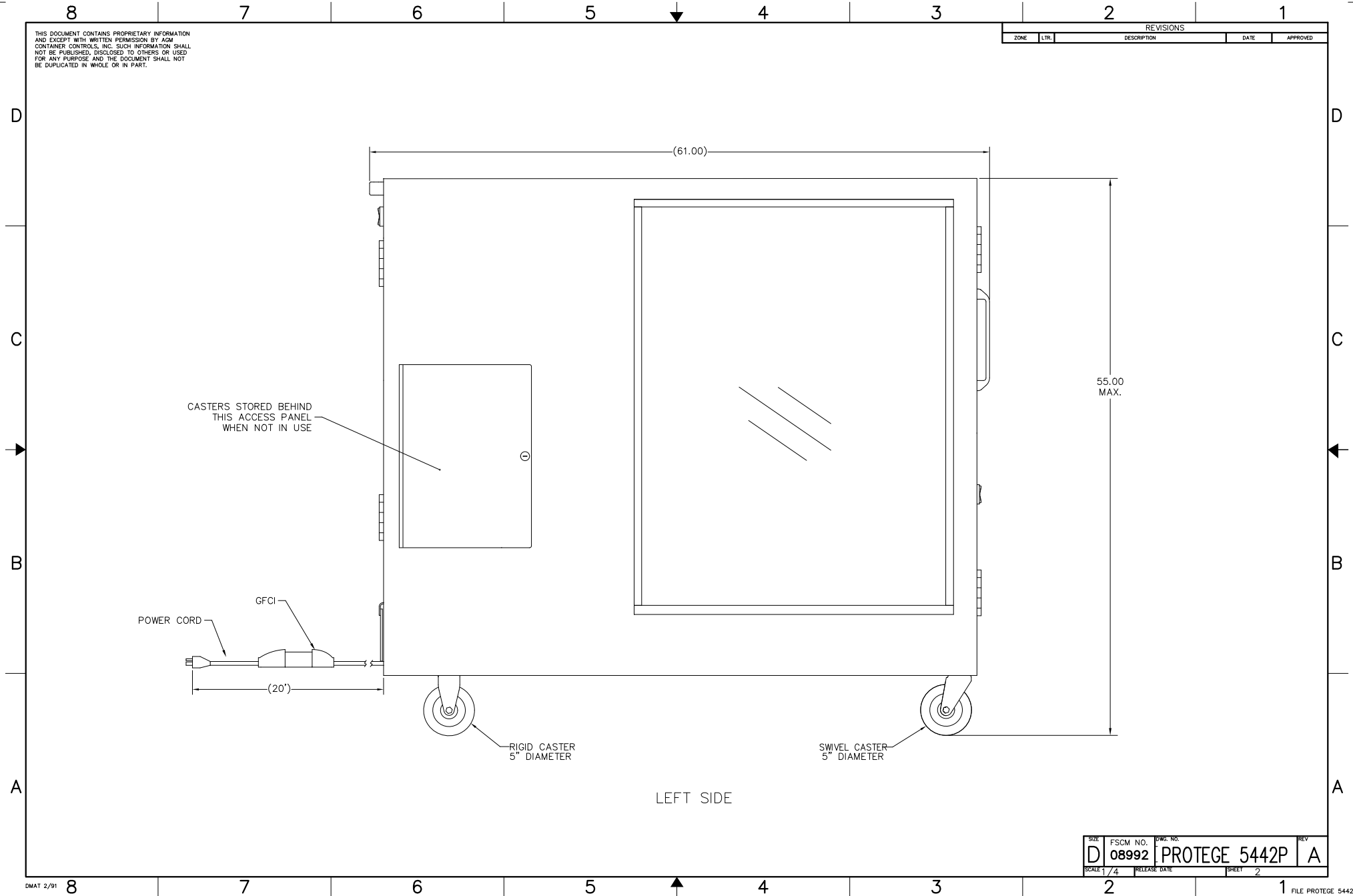
PART		NEXT FINAL		NEXT ASSY.		USED ON		SIMILAR TO		ACT. WT. CALC. WT.		CUSTOMER	
NO.	QTY.	NO.	PER ASSY.	NO.	PER ASSY.	NO.	PER ASSY.	NO.	PER ASSY.	NO.	PER ASSY.	NO.	PER ASSY.

INTERPRET DIMENSIONS AND TOLERANCES IN INCHES		CONTRACT	
DECIMALS	ANGLES	DRAWN	DATE
XX ±.25	±.5°	P. BROBECK	8-4-2011
XXX ±.030		B. KOOMAR	8-4-11
		B. KOOMAR	8-4-11

GGM CONTAINER CONTROLS, INC.			
P.O. BOX 40020 - TUCSON, ARIZONA 85717-0020			
TITLE		REV	
PORTABLE WHEELCHAIR LIFT ASSEMBLY		A	
SIZE	FSCM NO.	DWG. NO.	REV
D	08992	PROTEGE 5442P	A
SCALE	RELEASE DATE	SHEET	OF
1/4		1	4

THIS DOCUMENT CONTAINS PROPRIETARY INFORMATION AND EXCEPT WITH WRITTEN PERMISSION BY AGM CONTAINER CONTROLS, INC. SUCH INFORMATION SHALL NOT BE PUBLISHED, DISCLOSED TO OTHERS OR USED FOR ANY PURPOSE AND THE DOCUMENT SHALL NOT BE DUPLICATED IN WHOLE OR IN PART.

REVISIONS				
ZONE	LTR.	DESCRIPTION	DATE	APPROVED



SIZE	FSCM NO.	DWG. NO.	REV.
D	08992	PROTEGE 5442P	A
SCALE	1/4	RELEASE DATE	SHEET 2

THIS DOCUMENT CONTAINS PROPRIETARY INFORMATION AND EXCEPT WITH WRITTEN PERMISSION BY AGM CONTAINER CONTROLS, INC. SUCH INFORMATION SHALL NOT BE PUBLISHED, DISCLOSED TO OTHERS, OR USED FOR ANY PURPOSE AND THE DOCUMENT SHALL NOT BE DUPLICATED IN WHOLE OR IN PART.

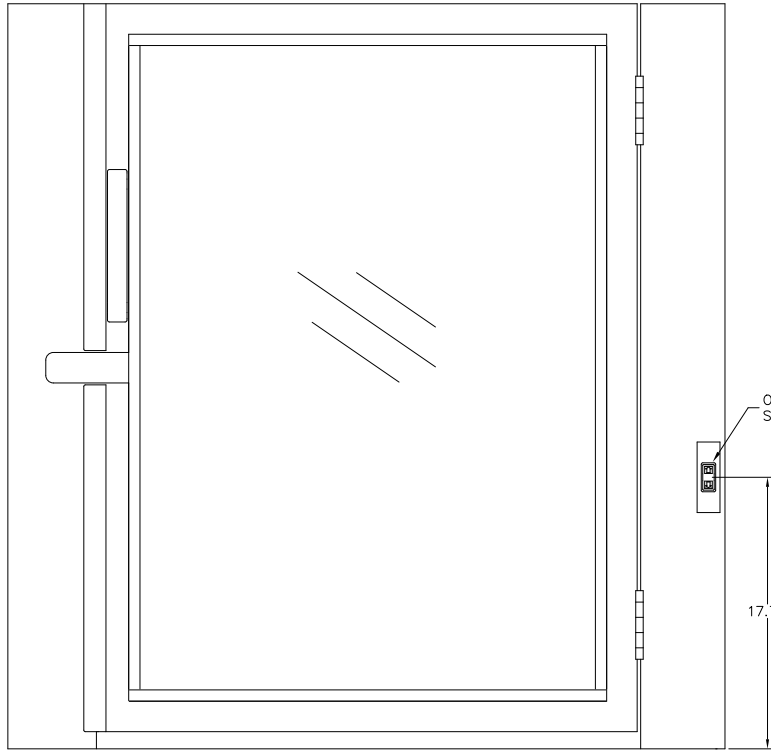
REVISIONS				
ZONE	LTR.	DESCRIPTION	DATE	APPROVED

D
C
B
A

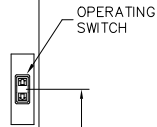
D
C
B
A

8 7 6 5 4 3 2 1

8 7 6 5 4 3 2 1

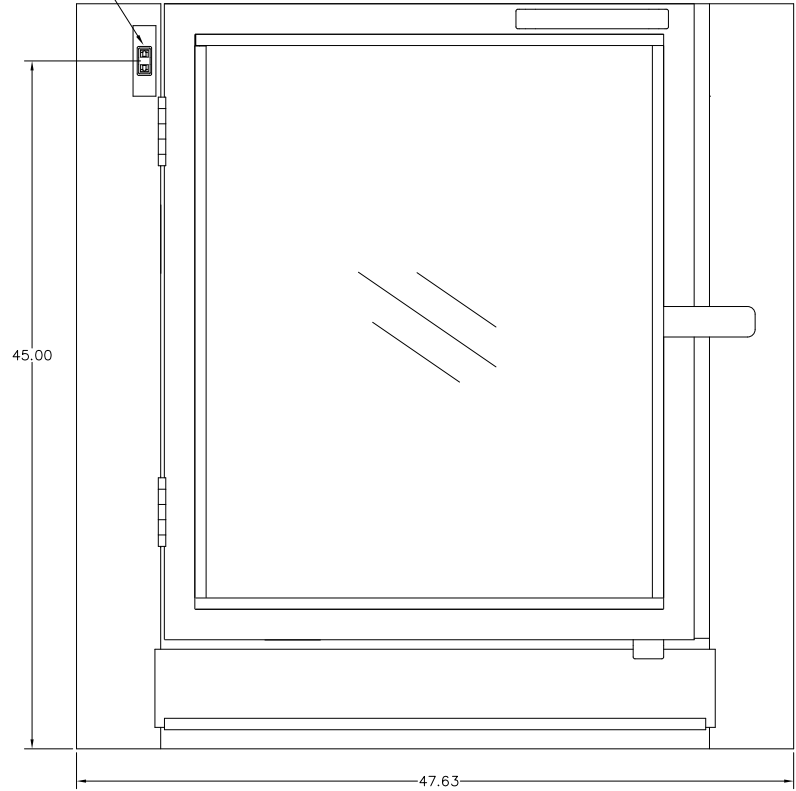


FRONT END



17.75

OPERATING SWITCH

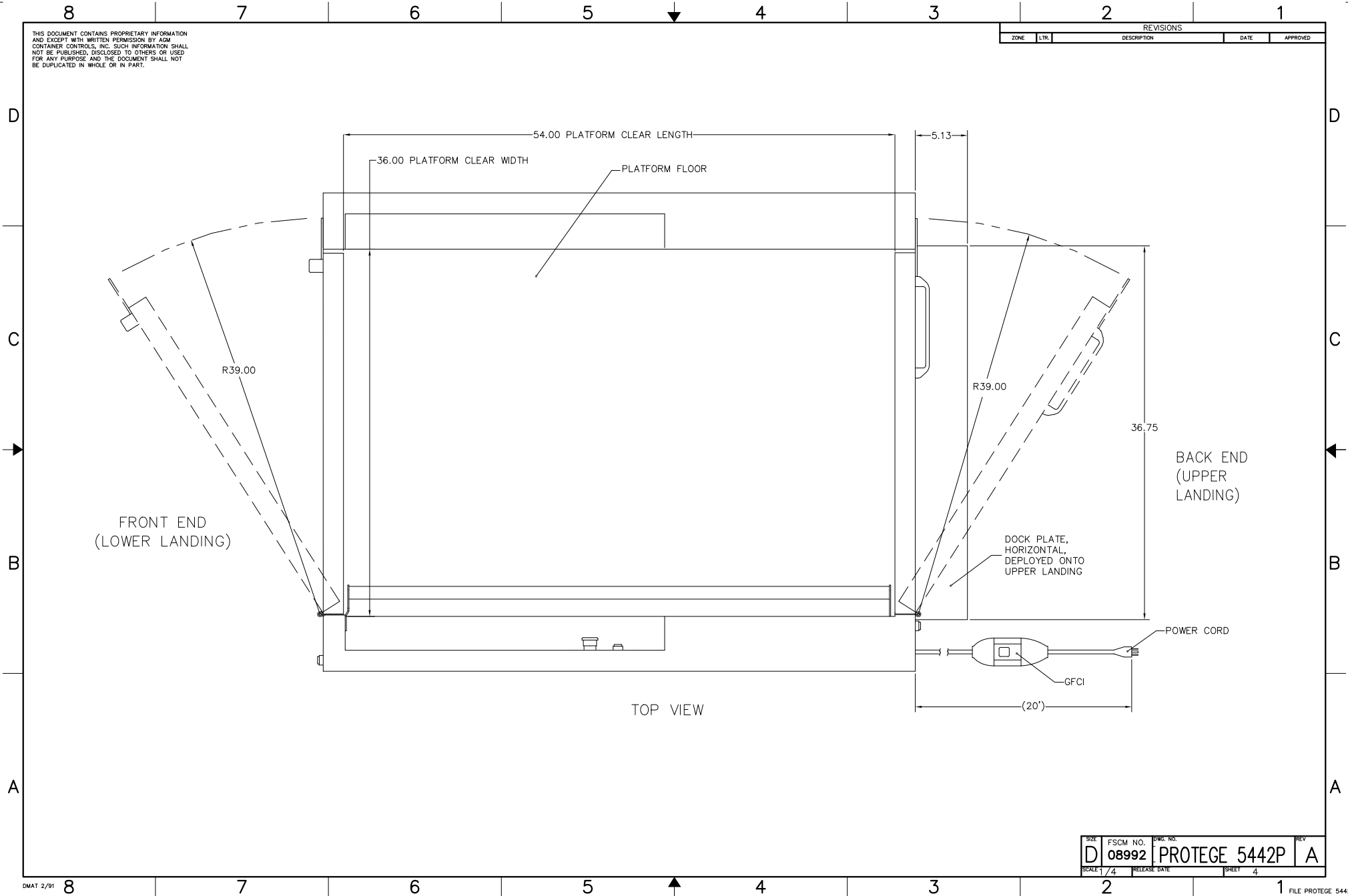


BACK END
POWER CORD NOT SHOWN

SIZE D	FSCM NO. 08992	DWG. NO. PROTEGE 5442P	REV A
SCALE 1/4	RELEASE DATE	SHEET 3	FILE 1

THIS DOCUMENT CONTAINS PROPRIETARY INFORMATION AND EXCEPT WITH WRITTEN PERMISSION BY AGM CONTAINER CONTROLS, INC. SUCH INFORMATION SHALL NOT BE PUBLISHED, DISCLOSED TO OTHERS OR USED FOR ANY PURPOSE AND THE DOCUMENT SHALL NOT BE DUPLICATED IN WHOLE OR IN PART.

REVISIONS				
ZONE	LTR.	DESCRIPTION	DATE	APPROVED



SIZE	FSCM NO.	DWG. NO.	REV.
D	08992	PROTEGE 5442P	A
SCALE	1/4	RELEASE DATE	SHEET 4