

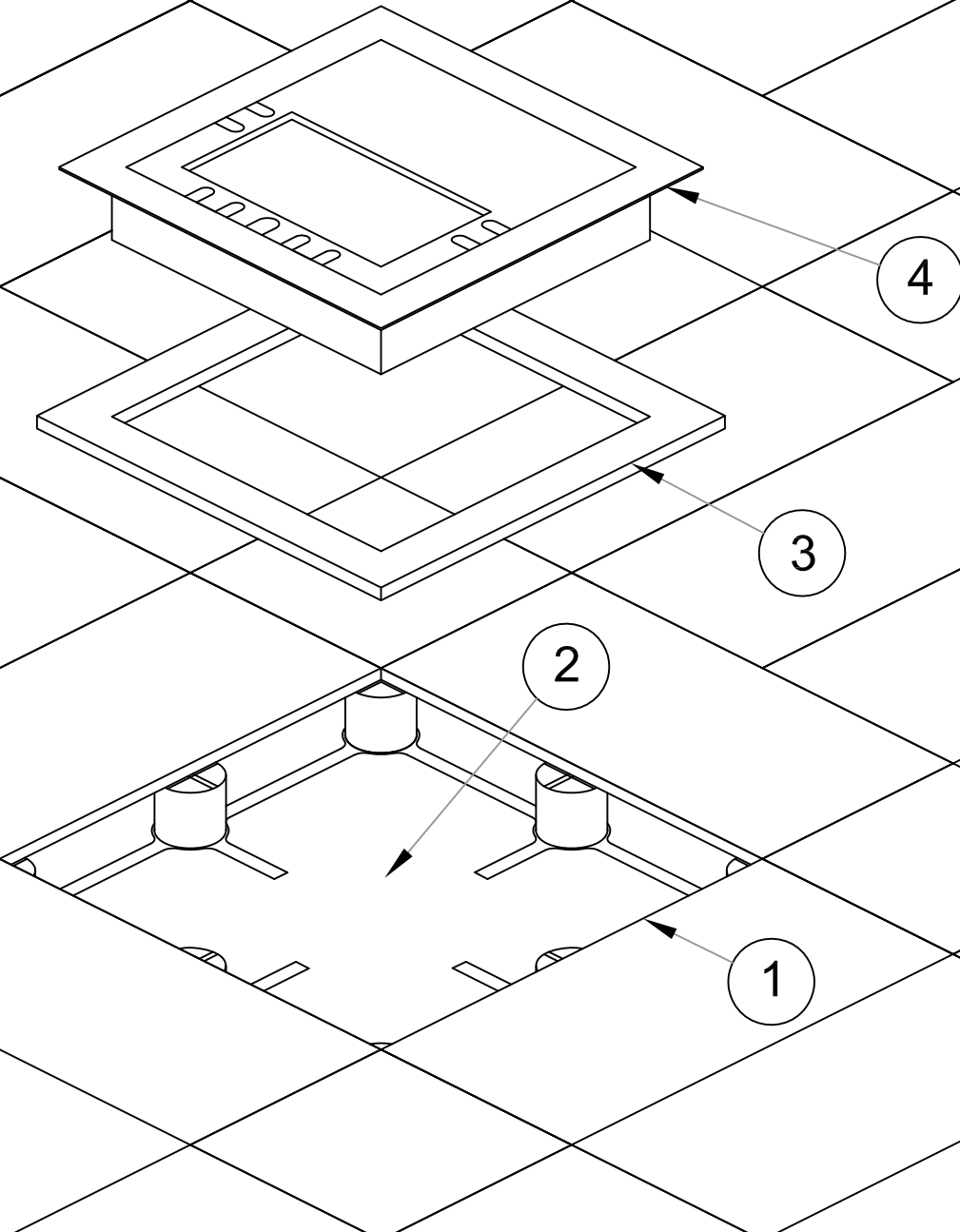


**ASM**<sup>®</sup>  
innovations in access flooring

**PowerTra**<sup>™</sup>

## Installation Of SLP-10 Electrical Box

Starnet Modular Cable System



### Instructions For Installing SLP-10 Electrical Box

1. Remove two (2) rectangular panels
2. Cut, to remove center pedestal
3. Place box mounting plate into opening
4. Place SLP-10 box into mounting plate

NOTE: Cut sheet drawing and information are subject to change without prior notice.

9/17

**ASM Modular Systems Inc.**<sup>®</sup>

9500 Industrial Center Dr. Ladson, SC, 29456 Tel: 843-534-1110 Fax: 843-534-1111 ([www.asmproducts.com](http://www.asmproducts.com))

**SCS - 1710**