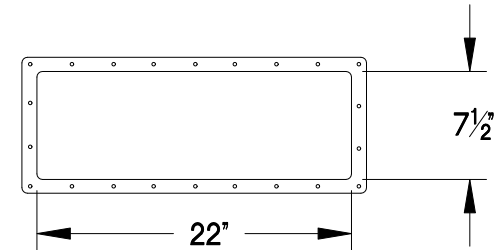
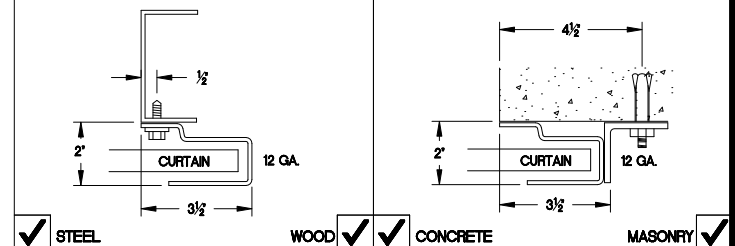


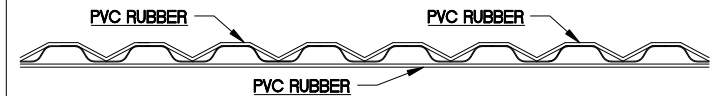
VISION LITE DETAIL (OPTIONAL)



GUIDE DETAILS



STANDARD CURTAIN



GENERAL NOTES:

CURTAIN:

- ☒ 26 GAUGE GALVANIZED STEEL WITH BAKED ON EPOXY PRIMER AND POLYESTER TOP COAT

GUIDES:

- ☒ ROLL FORMED 12 GAUGE GALVANIZED STEEL

OPERATION:

- ☒ RIGHT HAND SHOWN, LEFT HAND OPPOSITE

OTHER SURFACES:

- ☒ GALVANIZED OR SHOP COAT PRIMER

SIDE ROOM REQUIREMENTS				SEE 'ELEVATION'	
<input checked="" type="checkbox"/>	CHOOSE TYPE OF OPERATION BELOW			A-1	A-2
<input checked="" type="checkbox"/>	HAND-ROPE PULL			7'	7'
<input checked="" type="checkbox"/>	REDUCTION GEAR CHAIN HOIST			10'	7'
<input checked="" type="checkbox"/>	ELECTRIC MOTOR OPERATOR KIT			10'	7'

MRK.	QTY.	OPENING SIZE		OPERATION	R.H.	CLEARANCES		OPTION	PROJECT:		S:\ASTA Auto Cad Drawings 5_29_08\ASTA logo(NEW).jpg 4255 McEver Industrial Dr. Acworth, GA 30101 PH:(770) 924-2800 Fax:(770) 974-1455 www.astadoor.com	
		WIDTH "W"	HEIGHT "H"			L.H.	"X"		"Y"	ARCHITECT:		
									CONTRACTOR:			
									DISTRIBUTOR:			
									DATE:	SHEET: OF:	BY:	REF.#
MODEL 201 HD COMMERCIAL SHEET DOOR												

Asta Door Corporation is not responsible for the use of improper installation procedures, structural supports as well as field inspection prior to manufacturing and installation.

APPROVAL SIGNATURE: _____ DATE: _____