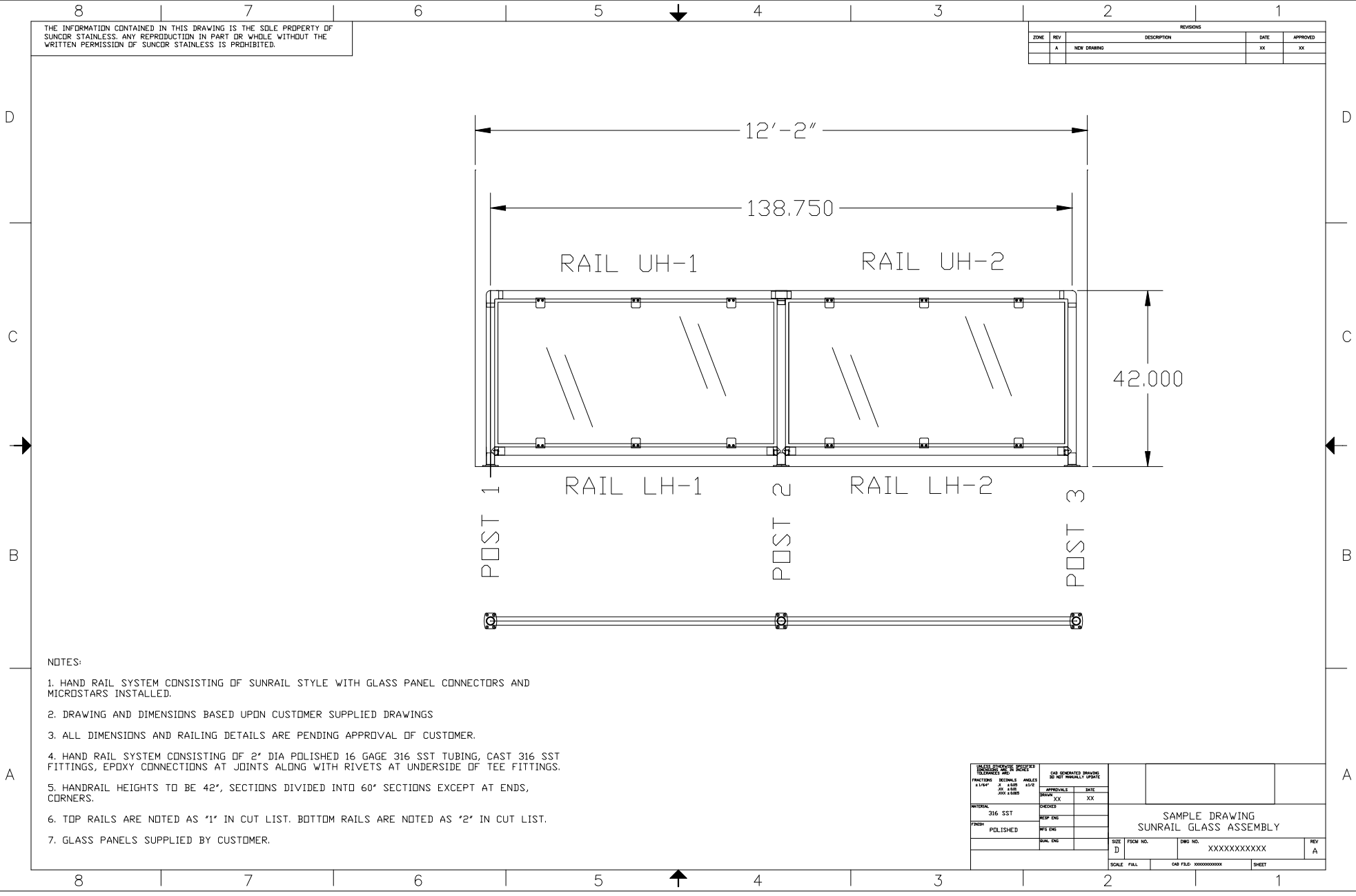


THE INFORMATION CONTAINED IN THIS DRAWING IS THE SOLE PROPERTY OF SUNGER STAINLESS. ANY REPRODUCTION IN PART OR WHOLE WITHOUT THE WRITTEN PERMISSION OF SUNGER STAINLESS IS PROHIBITED.

ZONE		REV	DESCRIPTION	DATE	APPROVED
A		NEW DRAWING		XX	XX



- NOTES:
- HAND RAIL SYSTEM CONSISTING OF SUNRAIL STYLE WITH GLASS PANEL CONNECTORS AND MICROSTARS INSTALLED.
 - DRAWING AND DIMENSIONS BASED UPON CUSTOMER SUPPLIED DRAWINGS
 - ALL DIMENSIONS AND RAILING DETAILS ARE PENDING APPROVAL OF CUSTOMER.
 - HAND RAIL SYSTEM CONSISTING OF 2" DIA POLISHED 16 GAGE 316 SST TUBING, CAST 316 SST FITTINGS, EPDXY CONNECTIONS AT JOINTS ALONG WITH RIVETS AT UNDERSIDE OF TEE FITTINGS.
 - HANDRAIL HEIGHTS TO BE 42", SECTIONS DIVIDED INTO 60" SECTIONS EXCEPT AT ENDS, CORNERS.
 - TOP RAILS ARE NOTED AS '1' IN CUT LIST. BOTTOM RAILS ARE NOTED AS '2' IN CUT LIST.
 - GLASS PANELS SUPPLIED BY CUSTOMER.

<small>UNLESS OTHERWISE SPECIFIED DIMENSIONS ARE IN INCHES</small> <small>FRACTIONS DECIMALS ANGLES</small> <small>1/16" 0.0625 30 3.000</small> <small>3/32" 0.0938 45 4.500</small> <small>1/8" 0.1250 60 6.000</small> <small>3/16" 0.1875 90 9.000</small>		<small>CAD GENERATED DRAWING</small> <small>DO NOT MANUALLY UPDATE</small>			
<small>CHECKED</small> <small>316 SST</small>		<small>APPROVALS</small> <small>DATE</small> <small>XX</small>			
<small>DESIGNED</small> <small>POLISHED</small>		<small>DATE</small> <small>XX</small>			
<small>SAMPLE DRAWING</small> <small>SUNRAIL GLASS ASSEMBLY</small>			<small>SIZE</small> <small>D</small>	<small>FORM NO.</small> <small>XXXXXXXXXX</small>	<small>REV</small> <small>A</small>
<small>SCALE</small> <small>FULL</small>		<small>CAD FILE</small> <small>XXXXXXXXXX</small>		<small>SHEET</small> <small>1</small>	