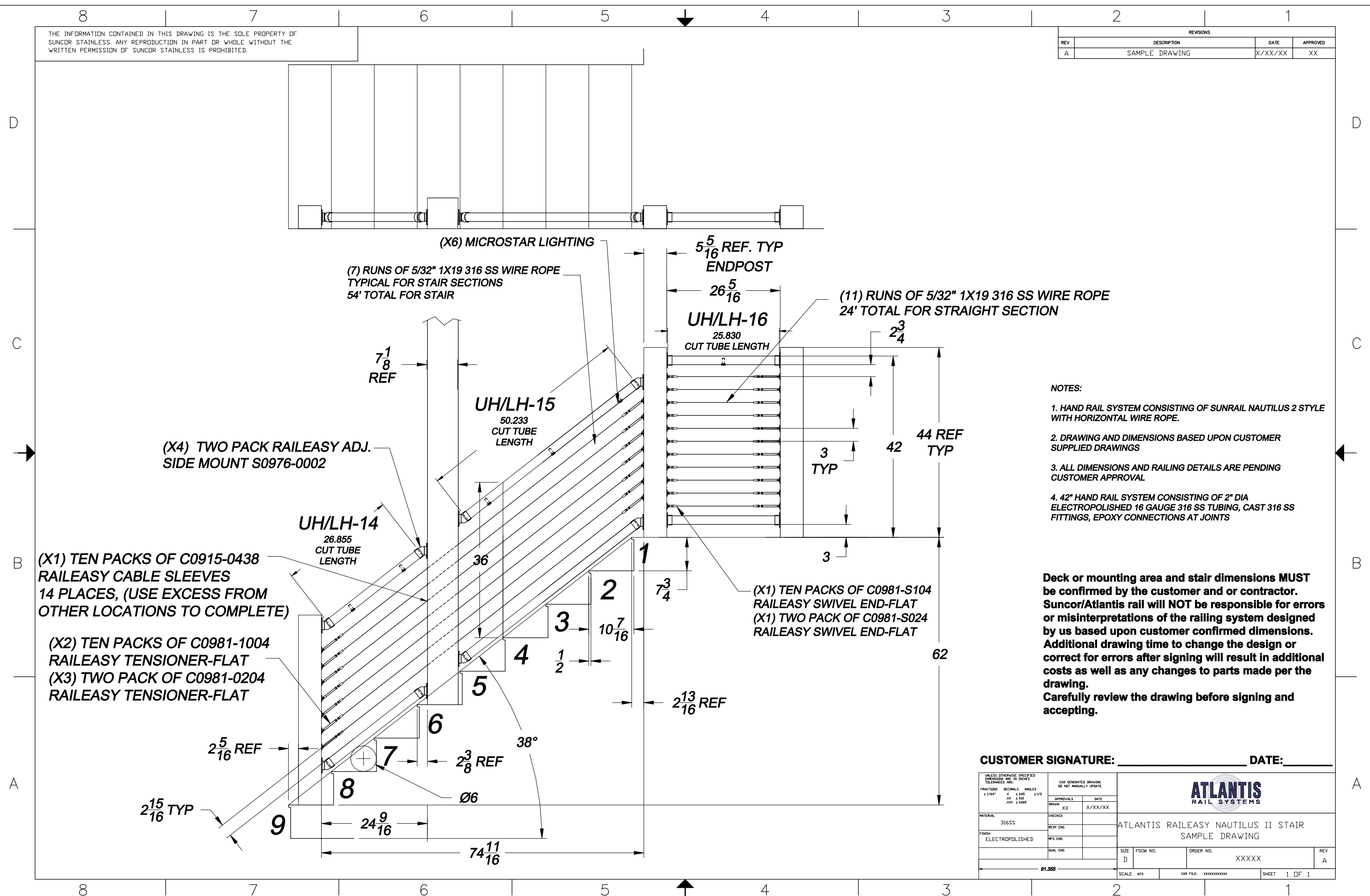


THE INFORMATION CONTAINED IN THIS DRAWING IS THE SOLE PROPERTY OF SUNCOR STAINLESS. ANY REPRODUCTION IN PART OR WHOLE WITHOUT THE WRITTEN PERMISSION OF SUNCOR STAINLESS IS PROHIBITED.

REVISIONS			
REV	DESCRIPTION	DATE	APPROVED
A	SAMPLE DRAWING	X/XX/XX	XX



- NOTES:**
- HAND RAIL SYSTEM CONSISTING OF SUNRAIL NAUTILUS 2 STYLE WITH HORIZONTAL WIRE ROPE.
 - DRAWING AND DIMENSIONS BASED UPON CUSTOMER SUPPLIED DRAWINGS
 - ALL DIMENSIONS AND RAILING DETAILS ARE PENDING CUSTOMER APPROVAL
 - 42" HAND RAIL SYSTEM CONSISTING OF 2" DIA ELECTROPOLISHED 16 GAUGE 316 SS TUBING, CAST 316 SS FITTINGS, EPOXY CONNECTIONS AT JOINTS

Deck or mounting area and stair dimensions MUST be confirmed by the customer and or contractor. Suncor/Atlantis rail will NOT be responsible for errors or misinterpretations of the railing system designed by us based upon customer confirmed dimensions. Additional drawing time to change the design or correct for errors after signing will result in additional costs as well as any changes to parts made per the drawing. Carefully review the drawing before signing and accepting.

CUSTOMER SIGNATURE: _____ DATE: _____

UNLESS OTHERWISE SPECIFIED DIMENSIONS ARE IN INCHES TOLERANCES ARE:		CAD GENERATED DRAWING DO NOT MANUALLY UPDATE	
FRACTIONS	DECIMALS	ANGLES	
± 1/64"	.XX ± 0.02	± 1/2°	
	.XXX ± 0.005		
MATERIAL		APPROVALS	DATE
316SS		DRAWN XX	X/XX/XX
FINISH		CHECKED	
ELECTROPOLISHED		RESP ENG	
		MFG ENG	
		QUAL ENG	
SIZE	FSCM NO.	ORDER NO.	REV
D		XXXXXX	A
91.355		SCALE	SHEET 1 OF 1



ATLANTIS RAILEASY NAUTILUS II STAIR
SAMPLE DRAWING