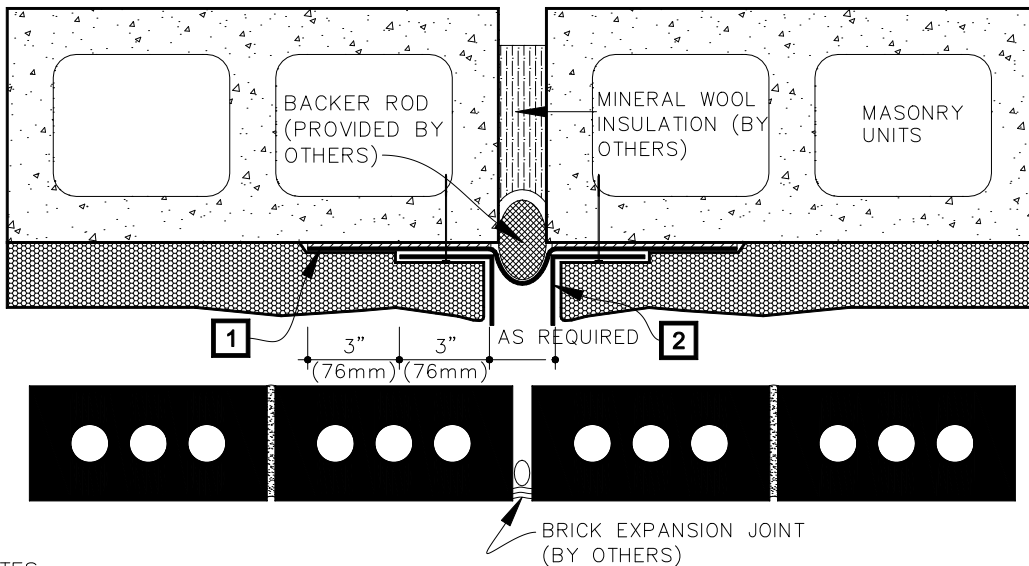


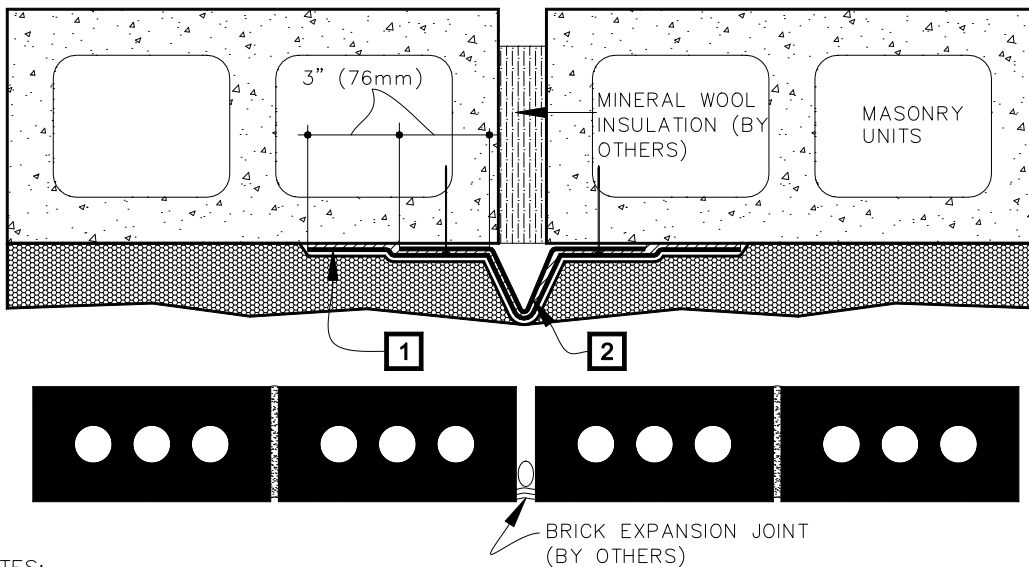
**OPTION A**



NOTES:

1. CARLISLE PRESSURE-SENSITIVE EPDM MEMBRANE FULLY ADHERED TO SUBSTRATE WITH PRIMER
2. PVC ANGLES MECHANICALLY SECURED INTO SUBSTRATE WALL.

**OPTION B**



NOTES:

1. CARLISLE PRESSURE-SENSITIVE EPDM MEMBRANE FULLY ADHERED TO SUBSTRATE WITH PRIMER.
2. 16 OZ COPPER OR 26GA STAINLESS STEEL E.J. SECURED @ 12" (305mm) O.C. ON BOTH SIDES.

		MASONRY EXPANSION JOINT OPTIONS	
SPF	SPRAY POLYURETHANE FOAM	<div style="display: flex; align-items: center;"> <div style="border: 1px solid black; width: 15px; height: 15px; margin-right: 5px;"></div> <div style="font-size: 8px; margin-right: 5px;">NOTE(S)</div> </div> <div style="display: flex; align-items: center;"> <div style="background-color: #cccccc; width: 15px; height: 15px; margin-right: 5px;"></div> <div style="font-size: 8px; margin-right: 5px;">SPRAYED POLYURETHANE FOAM</div> </div>	3.3
ccSPF	CLOSED CELL SPRAY POLYURETHANE FOAM		
c.i.	CONTINUOUS INSULATION		
LGMF	LIGHT GAUGE METAL FRAME		
		For additional information, refer to Specifications	