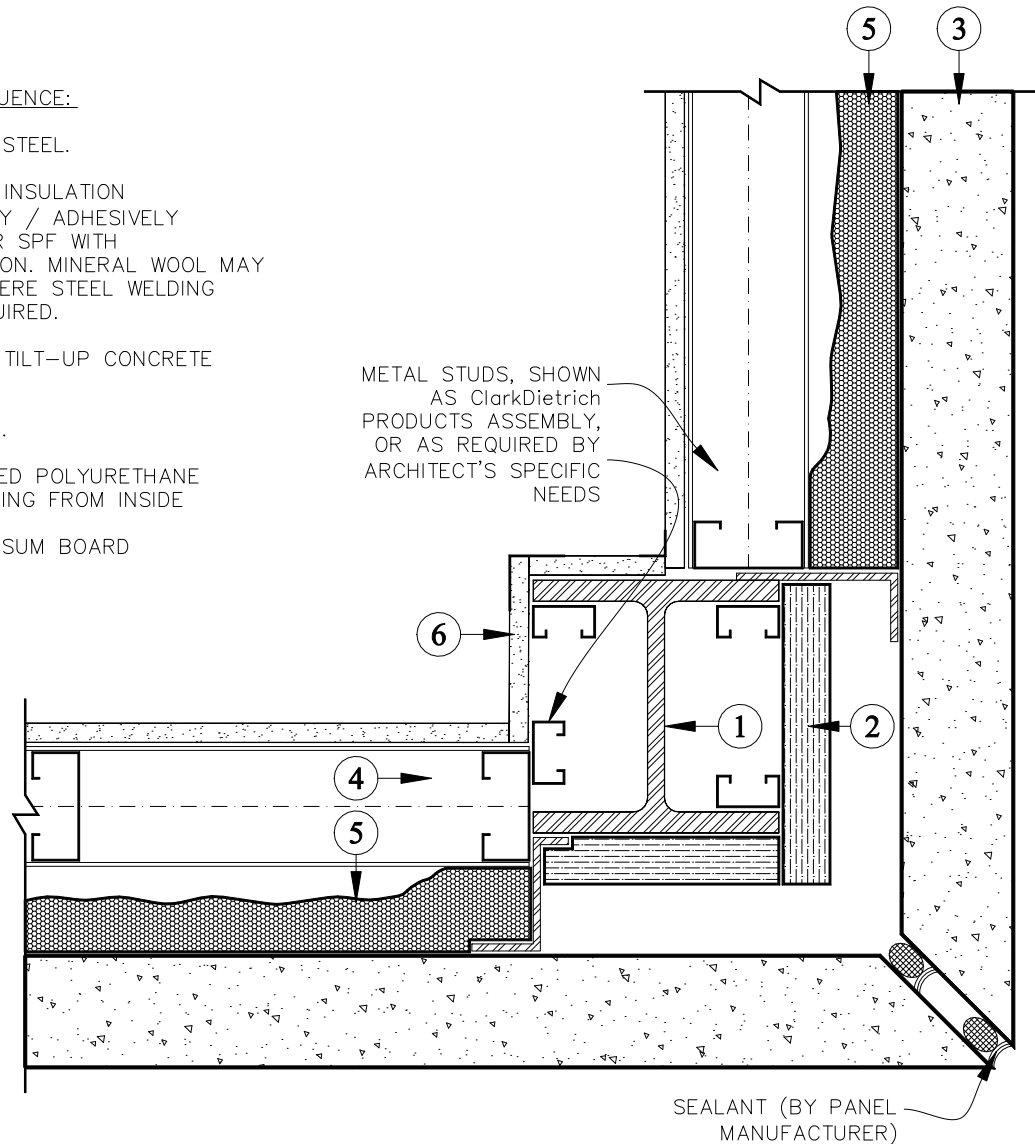


INSTALLATION SEQUENCE:

1. STRUCTURAL STEEL.
2. RIGID BOARD INSULATION MECHANICALLY / ADHESIVELY ATTACHED OR SPF WITH UV-PROTECTION. MINERAL WOOL MAY BE USED, WHERE STEEL WELDING WILL BE REQUIRED.
3. PRECAST OR TILT-UP CONCRETE PANELS.
4. METAL STUDS.
5. SPRAY APPLIED POLYURETHANE FOAM, REACHING FROM INSIDE
6. INTERIOR GYPSUM BOARD



NOTE:

SAME DETAIL APPLIES TO CONCRETE COLUMNS.

		INSULATION INSTALLATION AT INACCESSIBLE AREAS: H-COLUMN AT CORNER	7.1
SPF	SPRAY POLYURETHANE FOAM	<div style="display: flex; align-items: center;"> <div style="border: 1px solid black; width: 15px; height: 15px; margin-right: 5px;"></div> <div style="font-size: 8px; margin-right: 5px;">NOTE(S)</div> </div> <div style="display: flex; align-items: center; margin-top: 5px;"> <div style="width: 15px; height: 15px; background: repeating-linear-gradient(45deg, transparent, transparent 2px, black 2px, black 4px); margin-right: 5px;"></div> <div style="font-size: 8px;">SPRAYED POLYURETHANE FOAM</div> </div>	For additional information, refer to Specifications
ccSPF	CLOSED CELL SPRAY POLYURETHANE FOAM		
c.i.	CONTINUOUS INSULATION		
LGMF	LIGHT GAUGE METAL FRAME		