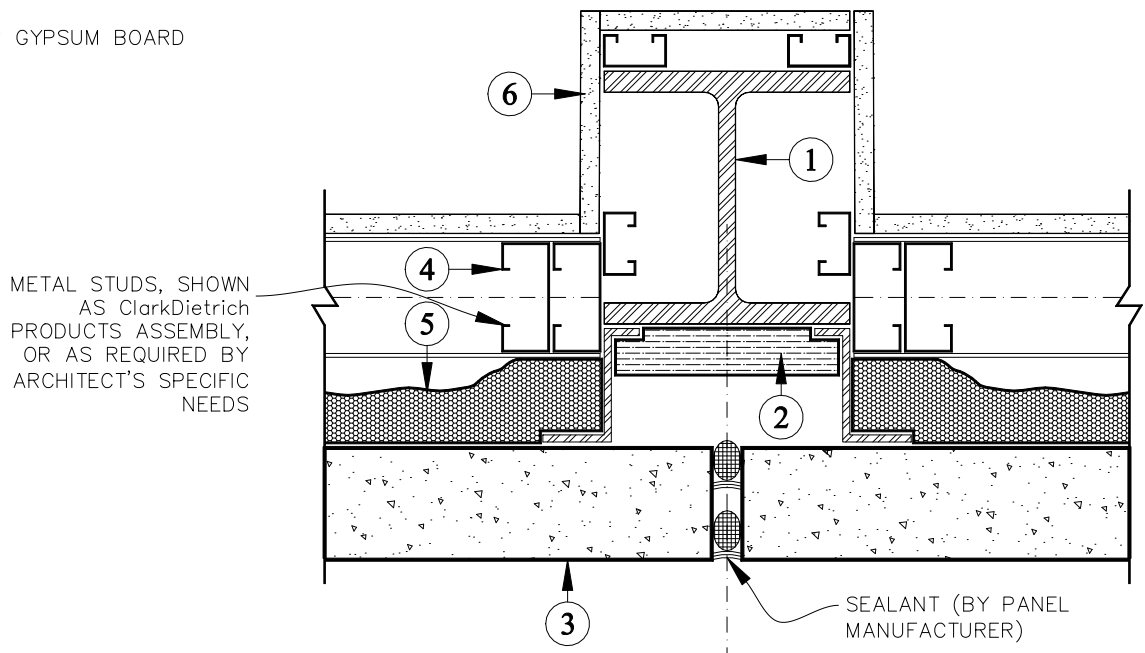


INSTALLATION SEQUENCE:

1. STRUCTURAL STEEL.
2. RIGID BOARD INSULATION  
MECHANICALLY / ADHESIVELY  
ATTACHED OR SPF WITH  
UV-PROTECTION. MINERAL WOOL MAY  
BE USED, WHERE STEEL WELDING  
WILL BE REQUIRED.
3. PRECAST OR TILT-UP CONCRETE  
PANELS.
4. METAL STUDS.
5. SPRAY APPLIED POLYURETHANE  
FOAM, REACHING FROM INSIDE
6. INTERIOR GYPSUM BOARD



NOTE:

SAME DETAIL APPLIES TO CONCRETE COLUMNS.

		INSULATION INSTALLATION AT INACCESSIBLE AREAS: H-COLUMN IN WALL	7.2
SPF	SPRAY POLYURETHANE FOAM	<div style="border: 1px solid black; padding: 2px; display: inline-block; text-align: center;">0</div> NOTE(S) SPRAYED POLYURETHANE FOAM	For additional information, refer to Specifications
ccSPF	CLOSED CELL SPRAY POLYURETHANE FOAM		
c.i.	CONTINUOUS INSULATION		
LGMF	LIGHT GAUGE METAL FRAME		