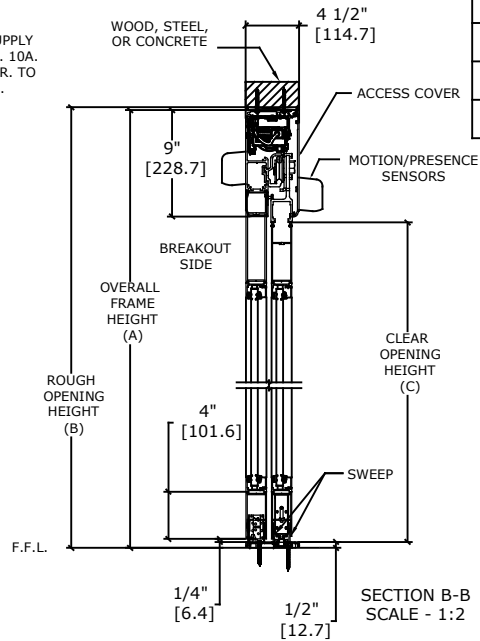
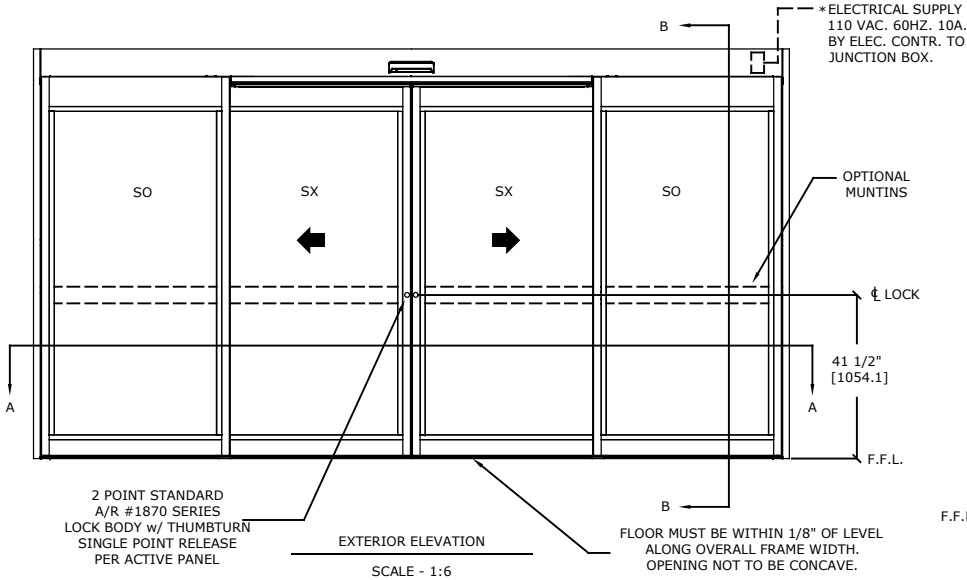




ASSA ABLOY ENTRANCE SYSTEMS
1900 AIRPORT ROAD
MONROE, NC 28110
PHONE: 1-866-237-2687
SPECDESK.NA.ENTRANCE@ASSAABLOY.COM

ASSA ABLOY SL500 Resilience R104

Overhead Concealed, Narrow Stile, Full Breakout, Bi-Part
Large & Small Missile Impact - Level D



| | OVERALL FRAME WIDTH (A) | ROUGH OPENING (B) | CLEAR OPENING (C) | DOOR WIDTH (D) | BREAKOUT WIDTH (E) |
|-------------------|-------------------------------|-------------------------|----------------------------------|----------------------------|-----------------------------|
| AT MAX WIDTH | 192" [4876.8] | 192 1/2" [4889.5] | 82 1/16" [2085.2] | 48 5/8" [1236.3] | 175 9/16" [4459.3] |
| WIDTH FORMULA | B - 1/2" | A + 1/2" | A/2 - 13 15/16" A/2 - [353.2] | A/4 + 5/8" A/4 + [17.1] | A - 16 7/16" A - [417.5] |
| AT MAX HEIGHT | 104" [2641.6] | 104 1/4" [2648.0] | 94" [2387.6] | | |
| HEIGHT FORMULA | B - 1/4" | A + 1/4" | A - 10" | | |

GLASS FORMULA: OFW /4 - 4 5/8 [119.2] X OFH -20 1/2 [520.80]

NOTES:

STANDARD PACKAGE CONSISTS OF:

- STANDARD FINISH:
CLASS 1, .018MM, CLEAR- AA-M12C22A41
CLASS 1, .018MM, DARK BRONZE- AA-M12C22A44
- AUTOMATIC OPERATOR
- NARROW STILE RAILS
- THRESHOLD
- 2-POINT LOCK WITH LOCK INDICATOR
- 9/16" GLASS STOPS AND BLOCKS
- 1/4" HS - .090" DUPONT SENTRYGLAS PLUS® - 3/16" HS
- DRY GLAZED
- MOTION/PRESENCE SENSORS
- 5-POSITION KNOB SWITCH
- BALL CATCH
- DUAL CONCEALED SWEEPS IN SX & SO PANELS

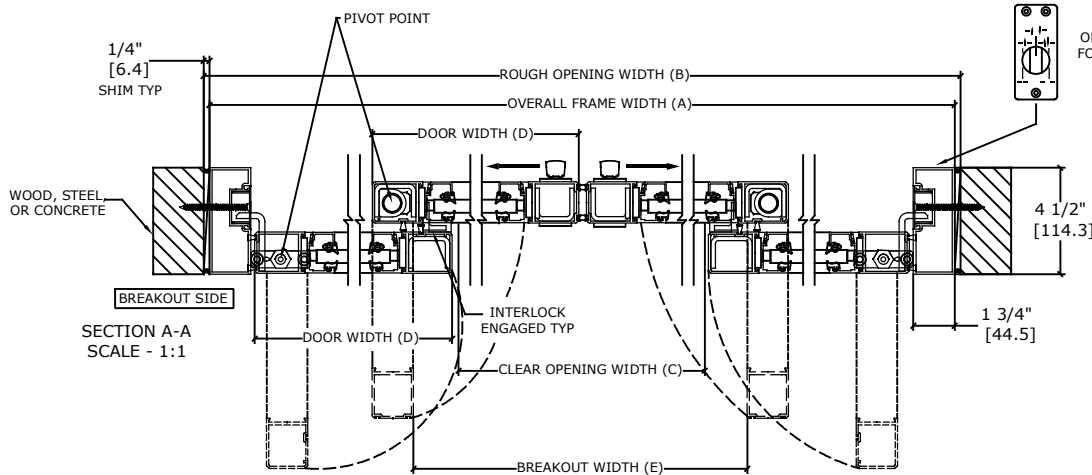
OPTIONS AVAILABLE:

- SPECIAL FINISHES
- 1" IG O.A. LAMINATED GLASS
- 3/8" HS - .090" DUPONT SENTRYGLAS PLUS® - 3/8" HS - 3/8" AIR GAP - 3/8" FT.
- SEE SHEET AA-39 FOR DETAILS
- 7" & 10" BOTTOM RAILS, SEE SHEET AA-44 FOR DETAILS
- THRESHOLD LEAD-UP, SEE SHEET AA-30 FOR DETAILS
- MUNTINS, SEE SHEET AA-44 FOR DETAILS
- SEE SHEET OS-10 FOR ALL OTHER OPTIONS

FOR MAXIMUM CURRENT DRAW, SEE PRODUCT SPECIFICATION,
INSTALLATION INSTRUCTIONS, OR THE UL LABEL ON THE EQUIPMENT.

TEST PROTOCOLS: TAS 201, TAS 202 & TAS 203
FLORIDA PRODUCT APPROVAL # 26008.1
MIAMI-DADE PRODUCT CONTROL NOA# 18-0424.02

REFER TO RELEVANT [LOCAL, STATE, NATIONAL, OR AHJ]
BUILDING CODE FOR MIN DOOR HEIGHT & MIN/MAX WIDTH
ALLOWABLE FOR EGRESS REQUIREMENT IN CONJUNCTION
WITH TABLE.



OPTIONAL FACTORY PREP
FOR SWITCH LOCATION @
74-1/2"H [1892.3]

| DESIGN PRESSURE RATING | |
|---|---|
| WHERE WATER INFILTRATION REQUIREMENT IS NEEDED | WHERE WATER INFILTRATION REQUIREMENT IS NOT NEEDED |
| NOT APPROVED | +/- 80 PSF |

| | | | | | |
|-----------------|----------|------------|----------|------|---------|
| DWG NO. 1017805 | | | | | |
| DESIGNED BY | DATE | CHECKED BY | DATE | REV. | DATE |
| DBN | 04/26/18 | SF | 08/22/18 | 3.0 | 2/13/19 |
| | | | | | |
| | | | | | |
| | | | | | |
| | | | | | |
| | | | | | |

ASSA ABLOY