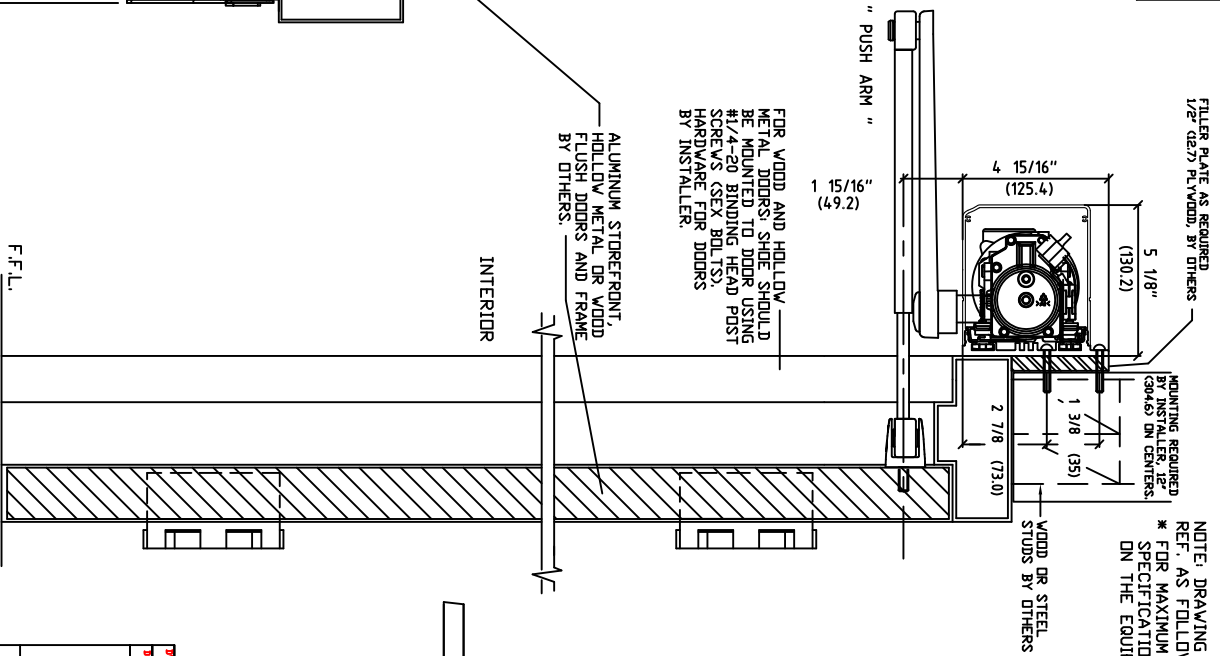
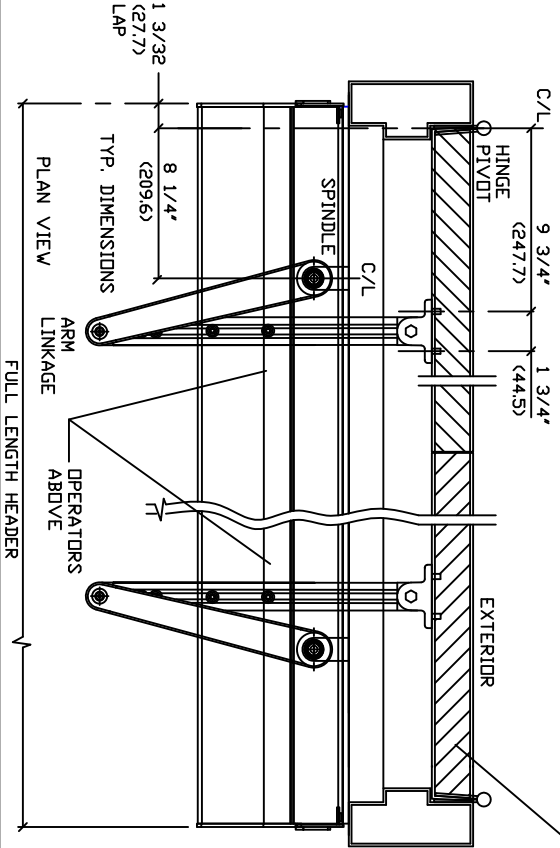
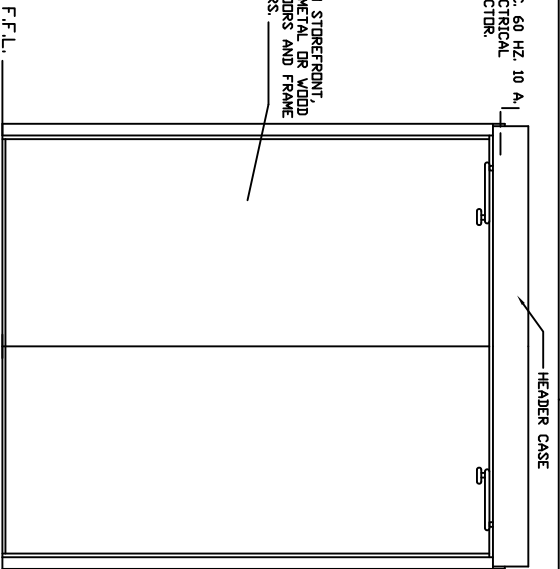


ASSA ABLOY

ASSA ABLOY Entrance Systems
 1900 Airport Road
 Morrisville, NC 28054
 Phone: 1-866-237-2687
 Speedskramer@assabloy.com

BESAM POWERSWING - LOW ENERGY
 SURFACE APPLIED PAIR
 SWING DOOR OPERATORS
 PUSH APPLICATION

110 VAC, 60 HZ, 10 A,
 BY ELECTRICAL
 CONTRACTOR



NOTE: DRAWING IS DIMENSIONED IN BOTH ENGLISH AND METRIC. REF. AS FOLLOWS: 1" (25.4). ALL METRIC SIZES ARE IN MILLIMETERS. * FOR MAXIMUM CURRENT DRAW PER OPERATOR, SEE PRODUCT SPECIFICATION, INSTALLATION INSTRUCTIONS, OR THE UL LABEL ON THE EQUIPMENT.

EXPLANATION OF USE

MANUAL USE -

PUSH OR PULL THE DOOR OPEN AND IT CLOSES AS A NORMAL MANUAL DOOR CLOSER.

AUTOMATIC -

ACTIVATE THE DOOR BY HANDICAPPED PUSHPLATE AND THE DOOR WILL SLOWLY POWER OPEN, TIME OUT, AND SLOWLY CLOSE.

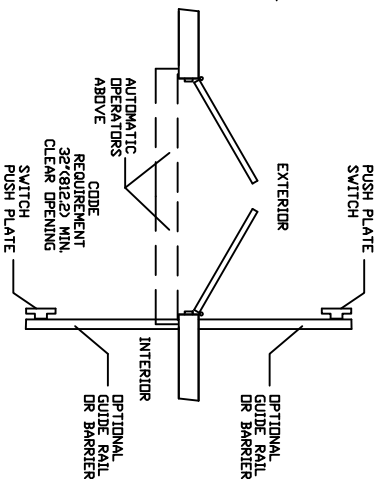


PUSH ACTIVATION - (OPTIONAL)

PUSH OR PULL THE DOOR AND IT WILL SLOWLY POWER OPEN, TIME OUT, AND SLOWLY CLOSE.



NOTE: OPERATIONAL ADJUSTMENTS TO BE IN ACCORDANCE WITH ANSI/BHMA 156.19 STANDARD FOR LOW ENERGY POWER OPERATED DOORS.



DOC NO.	1015833	REV.	10
DATE	10/11/16	BY	SS
DATE	10/11/16	REV.	10
DATE		REV.	

ASSA ABLOY