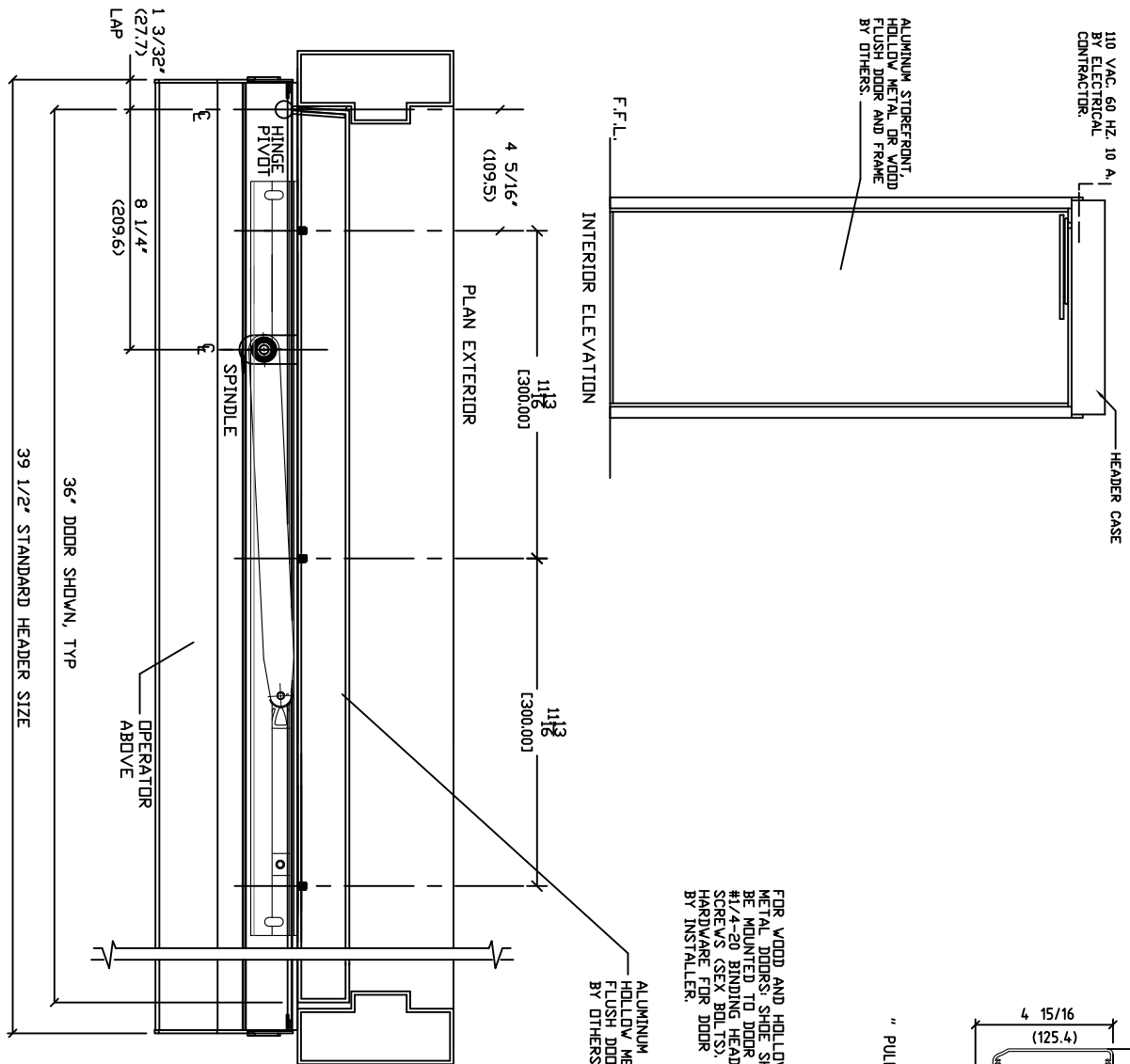


# ASSA ABLOY

ASSA ABLOY Entrance Systems  
 1900 Airport Road  
 Morrisville, NC 28110  
 Phone: 1-866-237-2687  
 Speedskrambe@assabloy.com

BESAM POWERSWING - PEDESTRIAN  
 SURFACE APPLIED  
 SWING DOOR OPERATOR  
 'PULL APPLICATION'

110 VAC, 60 HZ, 10 A,  
 BY ELECTRICAL  
 CONTRACTOR



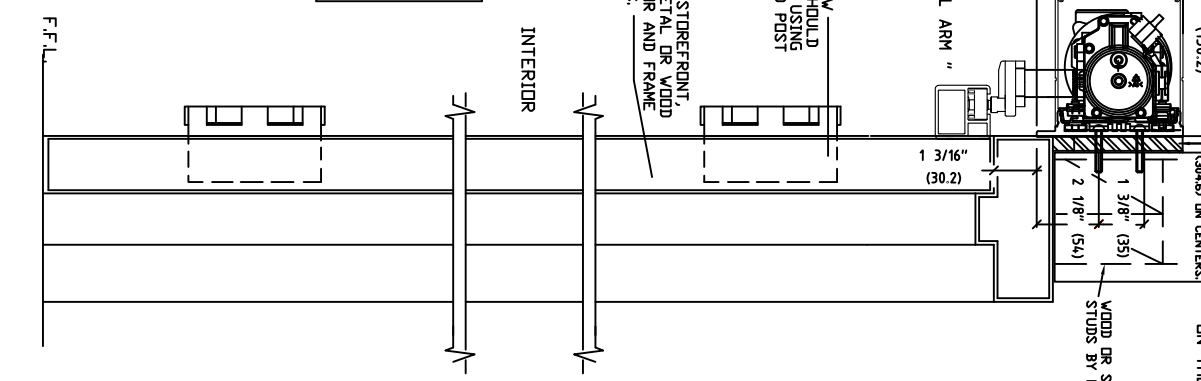
FILTER PLATE AS REQUIRED  
 1/2" (12.7) PLYWOOD, BY OTHERS

5 1/8" (130.2)  
 MOUNTING REQUIRED  
 BY INSTALLER, 1/2"  
 (30.48) ON CENTERS

WOOD OR STEEL  
 STUDS BY OTHERS

" PULL ARM "  
 FOR WOOD AND HOLLOW  
 METAL DOORS, SHOE SHOULD  
 BE MOUNTED TO DOOR USING  
 #1/4"-20 BINDING HEAD POST  
 SCREWS (SEE BOLTS),  
 HARDWARE FOR DOOR  
 BY INSTALLER.

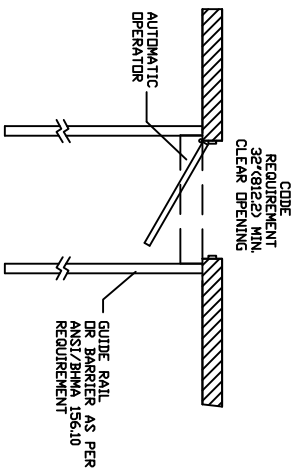
ALUMINUM STOREFRONT,  
 HOLLOW METAL OR WOOD  
 FLUSH DOOR AND FRAME  
 BY OTHERS.



NOTE: DRAWING IS DIMENSIONED IN BOTH ENGLISH AND METRIC.  
 REF. AS FOLLOWS: 1" (25.4); ALL METRIC SIZES ARE IN MILLIMETERS.  
 \* FOR MAXIMUM CURRENT DRAW, PER OPERATOR, SEE PRODUCT  
 SPECIFICATION, INSTALLATION INSTRUCTIONS, OR THE UL LABEL  
 ON THE EQUIPMENT.

NOTE 1- OPERATIONAL ADJUSTMENTS TO BE IN  
 ACCORDANCE WITH ANSI/BHMA 156.10 STANDARD  
 FOR PEDESTRIAN OPERATED DOORS.

NOTE 1- ACTIVATION/SAFETY SENSORS AND SIGNAGE ARE REQUIRED  
 IN ACCORDANCE WITH ANSI/BHMA 156.10 STANDARD  
 FOR PEDESTRIAN OPERATED DOORS.



DATE	10/15/94	BY	HW	DATE	10/13/16	CHK	BS	DATE	10/13/16	REV	10
<b>ASSA ABLOY</b>											