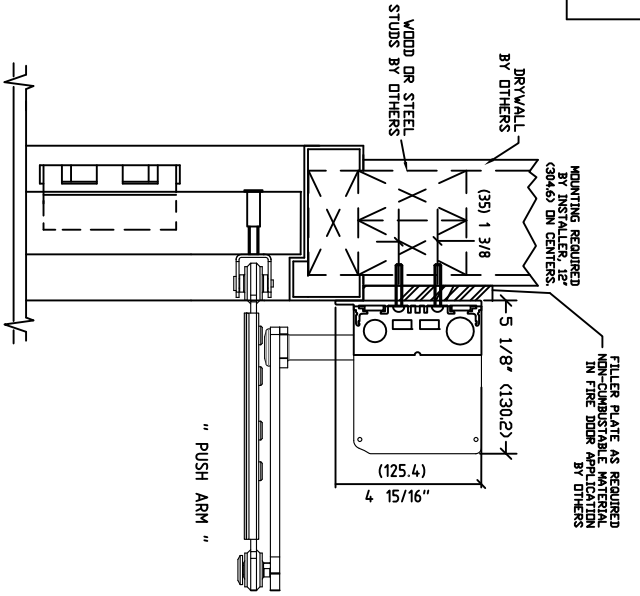
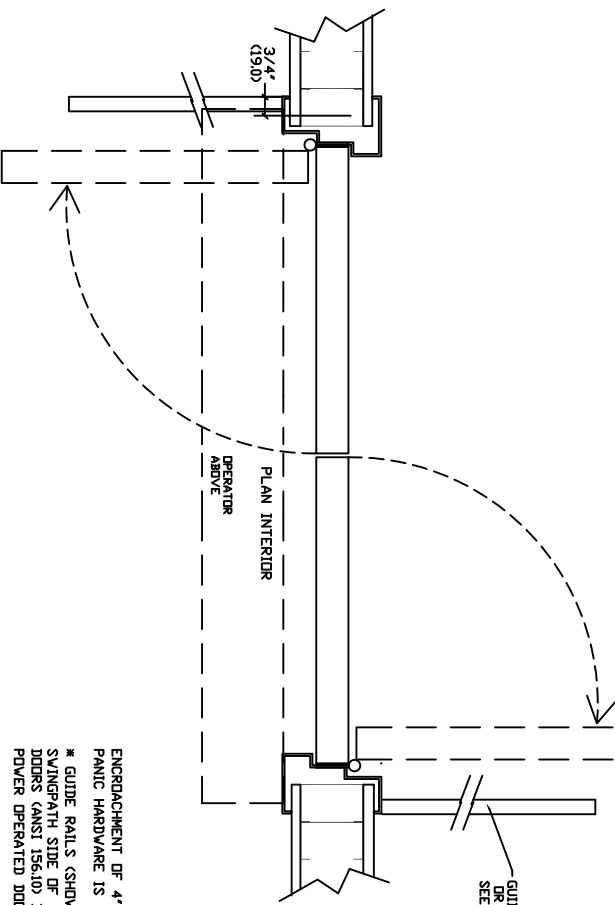
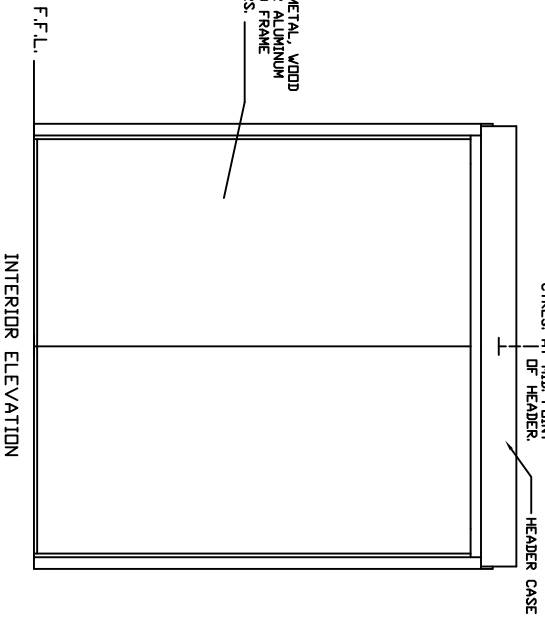


ASSA ABLOY

ASSA ABLOY Entrance Systems
 1900 Airport Road
 Morris, NC 28110
 Phone: 1-866-237-2687
 Speedskrambe@assaabloy.com

BESAM SW2001 SURFACE APPLIED DUAL SWING DOOR OPERATOR DUAL EGRESS

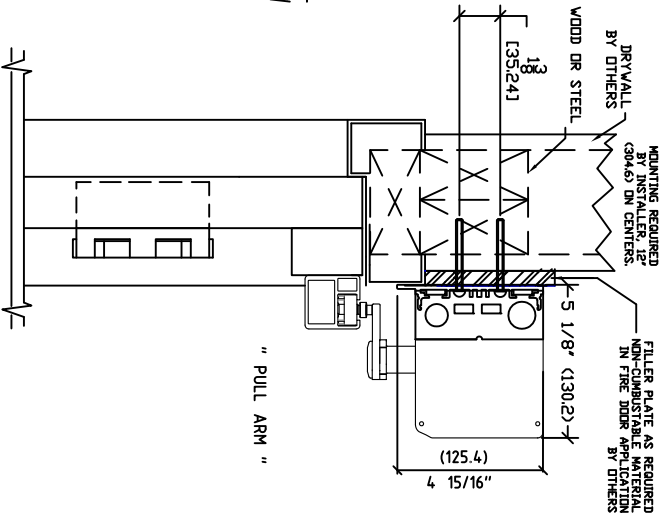
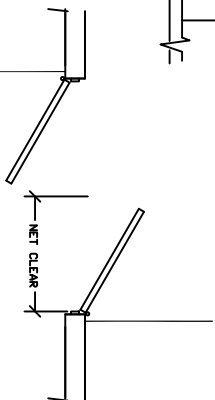
120 VAC, 60 HZ, 20 A.
 BY ELEC. CONTR. FOR
 CTRLS. AT MID. POINT
 OF HEADER



NOTE: *
 NET CLEAR (EGRESS) MIN 32" (812.8) SINGLE DOOR

ENCROACHMENT OF 4" INTO NET CLEAR BY
 PANIC HARDWARE IS PERMITTED ABOVE 34".
 * GUIDE RAILS (SHOWN) ARE REQUIRED ON THE
 SWINGPATH SIDE OF POWER OPERATED PEDESTRIAN
 POWER OPERATED DOORS (ANSI 156.19).

NOTE: *
 SINGLE DOOR WIDTH NOT LESS THAN 30".



NOTE:
 SW2001 IS DESIGNED FOR HIGH PERFORMANCE, HEAVY
 USAGE PEDESTRIAN APPLICATIONS THAT COMPLY WITH
 ANSI A156.10. THE OPERATOR CAN ALSO BE ADJUSTED
 FOR LOWER MANUAL PUSH FORCES TO COMPLY WITH
 ANSI 156.19 AND FIRE DOOR REGULATIONS.

STANDARD FINISH:
 CLEAR - AA-C23-A31,
 DARK BRONZE - AA-C23-A44

SPECIAL FINISHES ARE AVAILABLE

NOTE: DRAWING IS DIMENSIONED IN BOTH ENGLISH
 AND METRIC. REF. AS FOLLOWS: 1: (25.4).
 ALL METRIC SIZES ARE IN MILLIMETERS.

DATE: 10/15/2015
 DRAWN BY: HHV
 DATE: 10/20/16
 CHECK BY: BSS
 DATE: 10/20/16
 REV: 10
 DATE:

ASSA ABLOY