

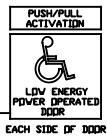
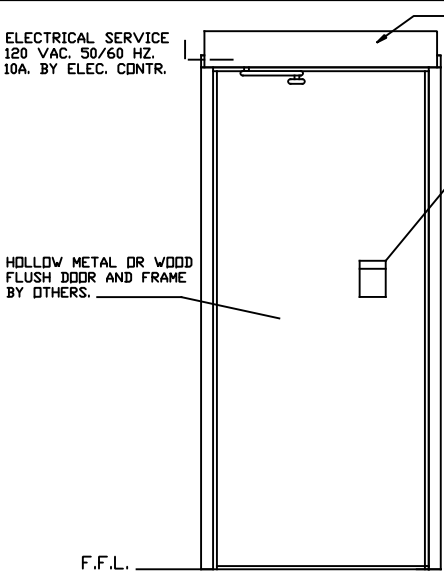
**ASSA ABLOY**

ASSA ABLOY Entrance Systems  
1900 Airport Road  
Monroe, NC 28110  
Phone: 1-866-237-2687  
specdesk.na.besam@assaabloy.com

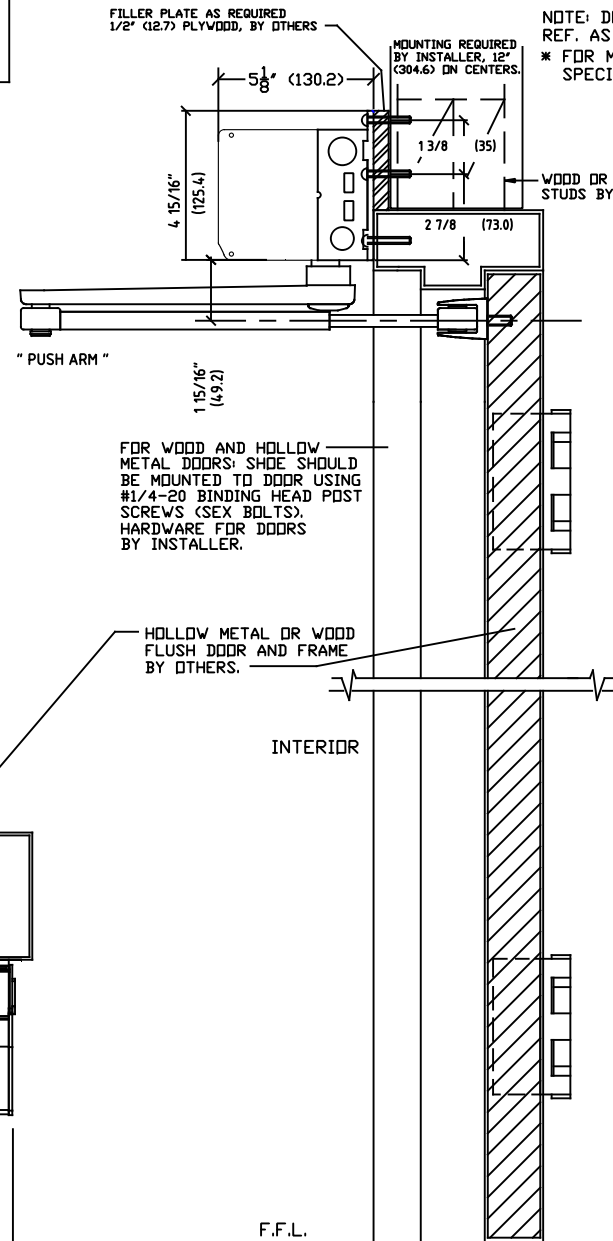
SW100 - LOW ENERGY  
SURFACE APPLIED  
SWING DOOR OPERATOR  
" PUSH APPLICATION "



\* ELECTRICAL SERVICE  
120 VAC, 50/60 HZ.  
10A. BY ELEC. CNTR.



FILLER PLATE AS REQUIRED  
1/2" (12.7) PLYWOOD, BY OTHERS



NOTE: DRAWING IS DIMENSIONED IN BOTH ENGLISH AND METRIC.  
REF. AS FOLLOWS: 1" (25.4). ALL METRIC SIZES ARE IN MILLIMETERS.  
\* FOR MAXIMUM CURRENT DRAW PER OPERATOR, SEE PRODUCT  
SPECIFICATION OR INSTALLATION INSTRUCTIONS.

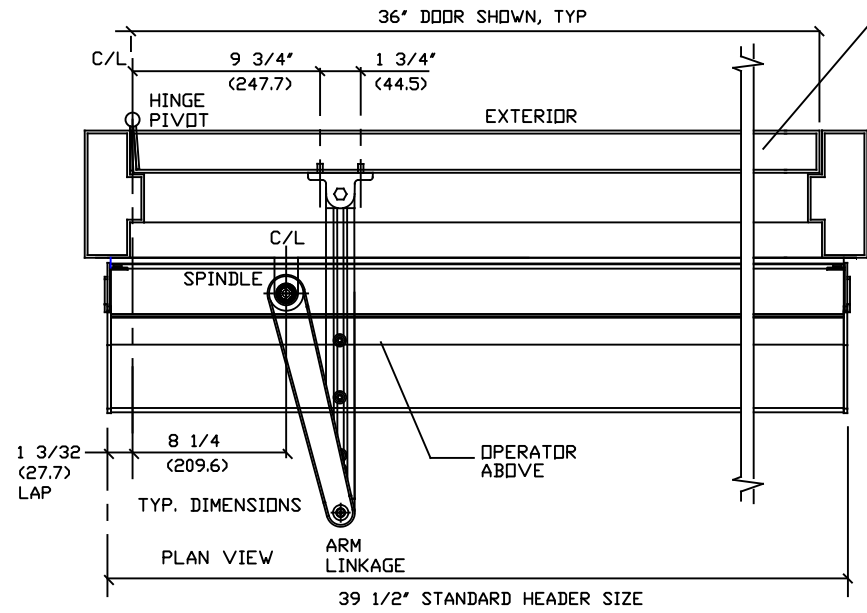
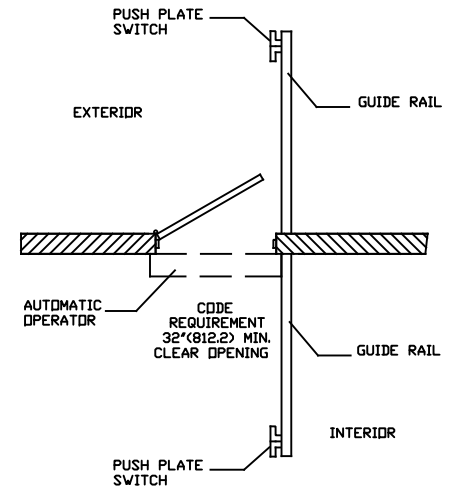
**EXPLANATION OF USE**

**MANUAL** 1-  
PUSH OR PULL THE DOOR OPEN AND IT  
CLOSES AS A NORMAL MANUAL DOOR CLOSER.

**AUTOMATIC** 1-  
ACTIVATE THE DOOR BY HANDICAPPED  
PUSHPLATE AND THE DOOR WILL SLOWLY  
POWER OPEN, TIME OUT, AND SLOWLY  
CLOSE.

**PUSH ACTIVATION** 1- (OPTIONAL)  
PUSH OR PULL THE DOOR AND IT WILL  
SLOWLY POWER OPEN, TIME OUT, AND  
SLOWLY CLOSE.

**NOTE** 1- OPERATIONAL ADJUSTMENTS TO BE IN  
ACCORDANCE WITH ANSI/BHMA STANDARD.  
FOR LOW ENERGY POWER  
OPERATED DOORS.



DWG NO.	1015913
DRN BY	MHW
DATE	10/26/16
CHK BY	SS
DATE	10/26/16
REV.	1.0
DATE	

**ASSA ABLOY**