

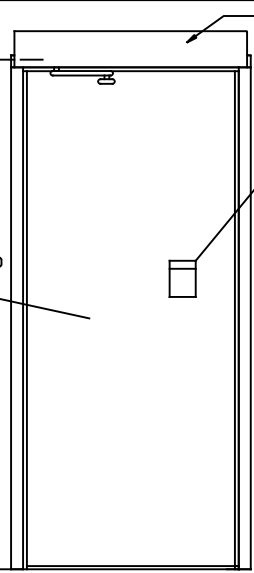
ASSA ABLOY

ASSA ABLOY Entrance Systems
1900 Airport Road
Monroe, NC 28110
Phone: 1-866-237-2687
specdesk.na.besa@assaabloy.com

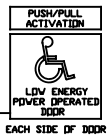
SW100 - LOW ENERGY
SURFACE APPLIED
SWING DOOR OPERATOR
" PUSH APPLICATION "



* ELECTRICAL SERVICE
120 VAC, 50/60 HZ,
10A. BY ELEC. CNTR.



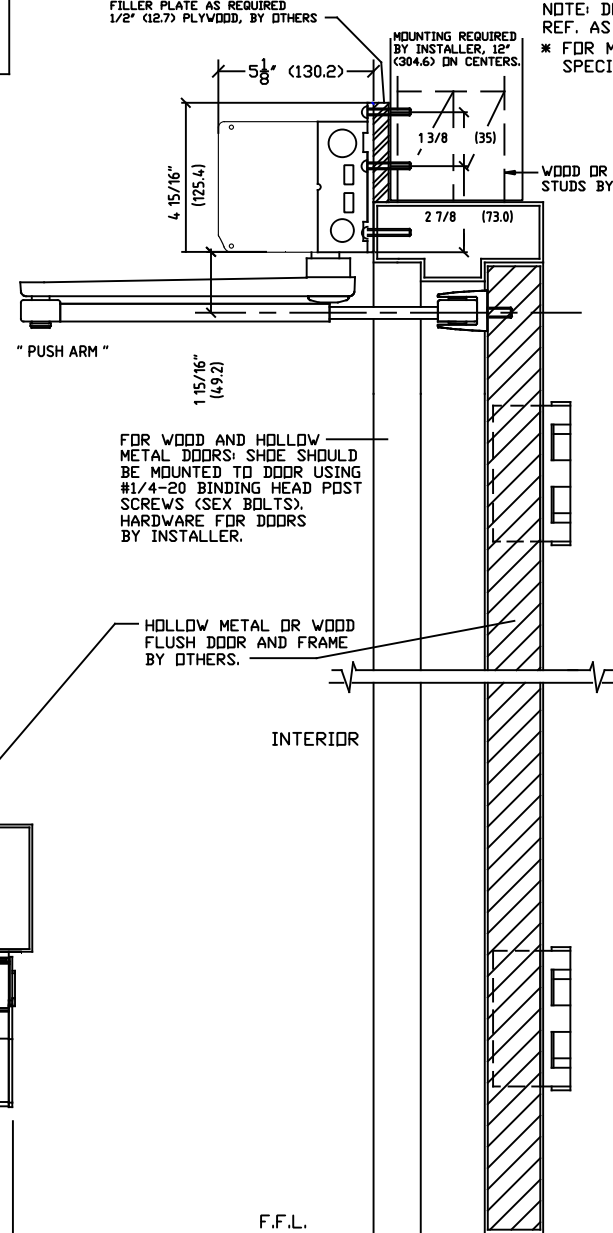
INTERIOR ELEVATION



HOLLOW METAL OR WOOD
FLUSH DOOR AND FRAME
BY OTHERS.

F.F.L.

FILLER PLATE AS REQUIRED
1/2" (12.7) PLYWOOD, BY OTHERS



" PUSH ARM "

FOR WOOD AND HOLLOW
METAL DOORS, SHOE SHOULD
BE MOUNTED TO DOOR USING
#1/4"-20 BINDING HEAD POST
SCREWS (SEX BOLTS).
HARDWARE FOR DOORS
BY INSTALLER.

HOLLOW METAL OR WOOD
FLUSH DOOR AND FRAME
BY OTHERS.

INTERIOR

F.F.L.

NOTE: DRAWING IS DIMENSIONED IN BOTH ENGLISH AND METRIC.
REF. AS FOLLOWS: 1" (25.4). ALL METRIC SIZES ARE IN MILLIMETERS.
* FOR MAXIMUM CURRENT DRAW PER OPERATOR, SEE PRODUCT
SPECIFICATION OR INSTALLATION INSTRUCTIONS.

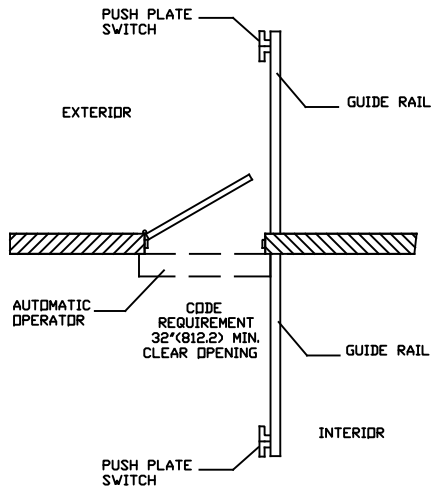
EXPLANATION OF USE

MANUAL 1-
PUSH OR PULL THE DOOR OPEN AND IT
CLOSES AS A NORMAL MANUAL DOOR CLOSER.

AUTOMATIC 1-
ACTIVATE THE DOOR BY HANDICAPPED
PUSHPLATE AND THE DOOR WILL SLOWLY
POWER OPEN, TIME OUT, AND SLOWLY
CLOSE.

PUSH ACTIVATION 1- (OPTIONAL)
PUSH OR PULL THE DOOR AND IT WILL
SLOWLY POWER OPEN, TIME OUT, AND
SLOWLY CLOSE.

NOTE 1- OPERATIONAL ADJUSTMENTS TO BE IN
ACCORDANCE WITH ANSI/BHMA STANDARD.
FOR LOW ENERGY POWER
OPERATED DOORS.



PUSH PLATE SWITCH

EXTERIOR

GUIDE RAIL

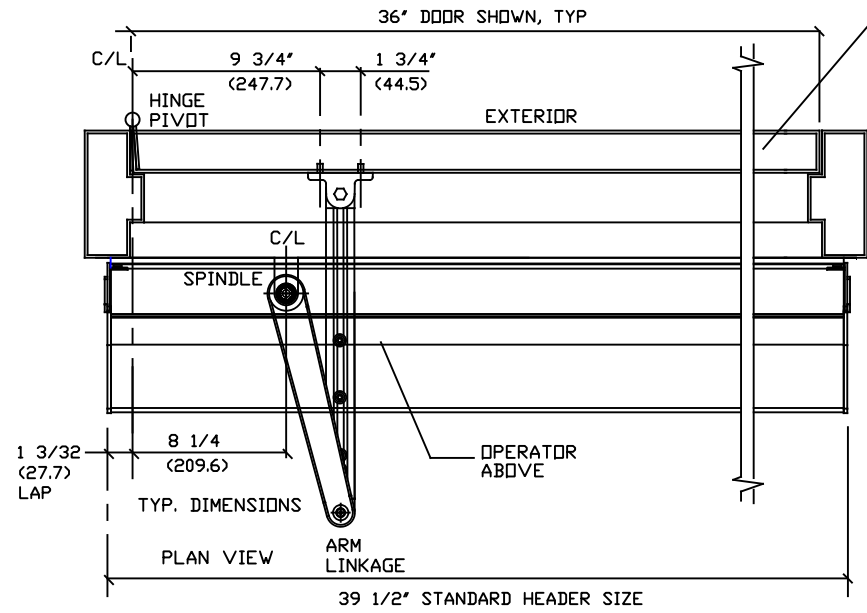
AUTOMATIC OPERATOR

CODE REQUIREMENT
32"(812.2) MIN.
CLEAR OPENING

GUIDE RAIL

INTERIOR

PUSH PLATE SWITCH



TYP. DIMENSIONS

PLAN VIEW

ARM LINKAGE

39 1/2" STANDARD HEADER SIZE

DWG NO. 1015914				
DRN BY	DATE	CHK BY	DATE	REV. 1.0
MHW	10/26/16	SS	10/26/16	
ASSA ABLOY				