

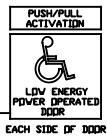
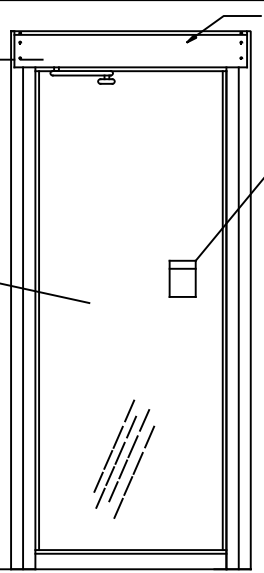
ASSA ABLOY

ASSA ABLOY Entrance Systems
1900 Airport Road
Monroe, NC 28110
Phone: 1-866-237-2687
specdesk.na.besam@assaabloy.com

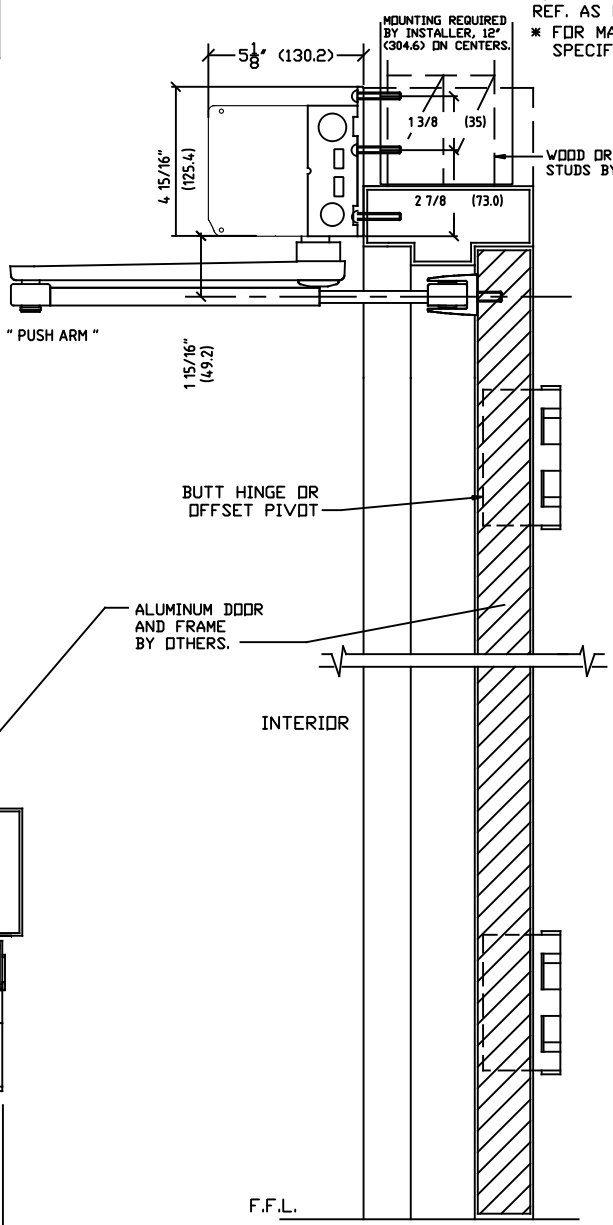
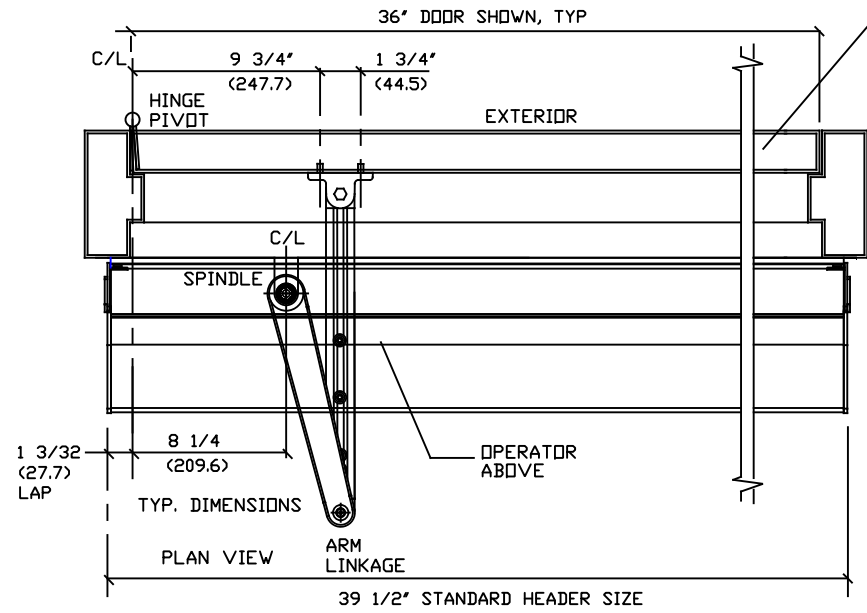
BESAM SW100 - LOW ENERGY
SURFACE APPLIED
SWING DOOR OPERATOR
" PUSH APPLICATION "



* ELECTRICAL SERVICE
120 VAC, 50/60 HZ,
10A. BY ELEC. CNTR.



INTERIOR ELEVATION



NOTE: DRAWING IS DIMENSIONED IN BOTH ENGLISH AND METRIC. REF. AS FOLLOWS: 1" (25.4). ALL METRIC SIZES ARE IN MILLIMETERS.
* FOR MAXIMUM CURRENT DRAW PER OPERATOR, SEE PRODUCT SPECIFICATION OR INSTALLATION INSTRUCTIONS.

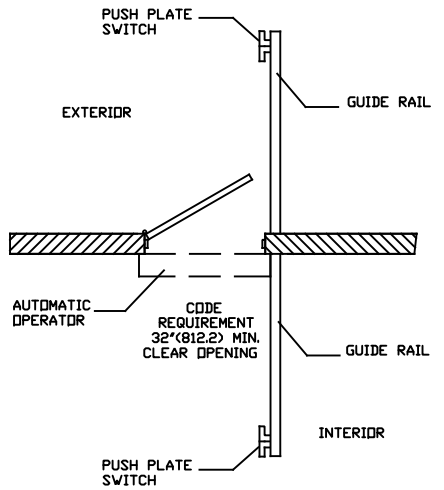
EXPLANATION OF USE

MANUAL 1-
PUSH OR PULL THE DOOR OPEN AND IT CLOSES AS A NORMAL MANUAL DOOR CLOSER.

AUTOMATIC 1-
ACTIVATE THE DOOR BY HANDICAPPED PUSHPLATE AND THE DOOR WILL SLOWLY POWER OPEN, TIME OUT, AND SLOWLY CLOSE.

PUSH ACTIVATION 1- (OPTIONAL)
PUSH OR PULL THE DOOR AND IT WILL SLOWLY POWER OPEN, TIME OUT, AND SLOWLY CLOSE.

NOTE 1- OPERATIONAL ADJUSTMENTS TO BE IN ACCORDANCE WITH ANSI/BHMA STANDARD. FOR LOW ENERGY POWER OPERATED DOORS.



DWG NO.	1015916
DRN BY	MHW
DATE	10/26/16
CHK BY	SS
DATE	10/26/16
REV.	1.0
DATE	

ASSA ABLOY