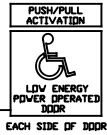


ASSA ABLOY

ASSA ABLOY Entrance Systems
1900 Airport Road
Monroe, NC 28110
Phone: 1-866-237-2687
specdesk.na.besam@assaabloy.com

BESAM SW100 - LOW ENERGY
SURFACE APPLIED PAIR
SWING DOOR OPERATORS
" PUSH APPLICATION "



FILLER PLATE AS REQUIRED
1/2" (12.7) PLYWOOD, BY OTHERS

MOUNTING REQUIRED
BY INSTALLER, 12"
(304.6) ON CENTERS.

NOTE: DRAWING IS DIMENSIONED IN BOTH ENGLISH AND METRIC.
REF. AS FOLLOWS: 1" (25.4). ALL METRIC SIZES ARE IN MILLIMETERS.
* FOR MAXIMUM CURRENT DRAW PER OPERATOR, SEE PRODUCT
SPECIFICATION OR INSTALLATION INSTRUCTIONS.

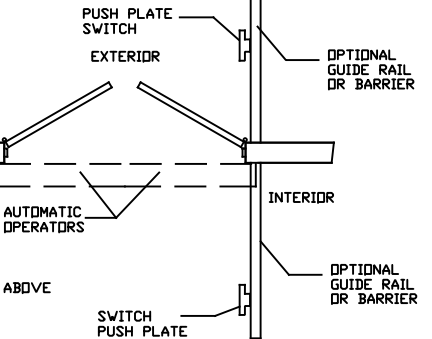
EXPLANATION OF USE

MANUAL 1-
PUSH OR PULL THE DOOR OPEN AND IT
CLOSES AS A NORMAL MANUAL DOOR CLOSER.

AUTOMATIC 1-
ACTIVATE THE DOOR BY HANDICAPPED
PUSHPLATE AND THE DOOR WILL SLOWLY
POWER OPEN, TIME OUT, AND SLOWLY
CLOSE.

PUSH ACTIVATION 1- (OPTIONAL)
PUSH OR PULL THE DOOR AND IT WILL
SLOWLY POWER OPEN , TIME OUT, AND
SLOWLY CLOSE.

NOTE 1- OPERATIONAL ADJUSTMENTS TO BE IN
ACCORDANCE WITH ANSI/BHMA STANDARD.
FOR LOW ENERGY POWER
OPERATED DOORS.



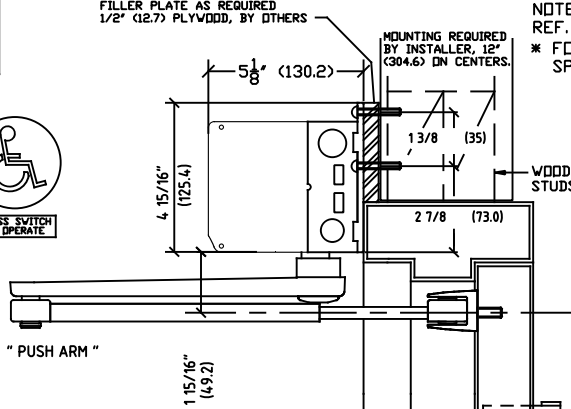
CODE
REQUIREMENT
32"(812.2) MIN. SINGLE DOOR
CLEAR OPENING WIDTH

DWG NO. US23-4700-05					
DRN BY	DATE	CHK BY	DATE	REV. C	DATE
SS	4/24/08	JAW	4/24/08		5/30/14

ASSA ABLOY

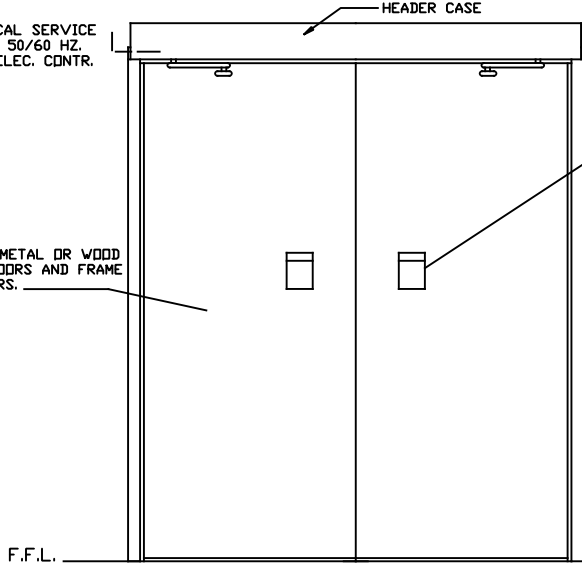
* ELECTRICAL SERVICE
120 VAC. 50/60 HZ.
10A. BY ELEC. CNTR.

HOLLOW METAL OR WOOD
FLUSH DOORS AND FRAME
BY OTHERS.

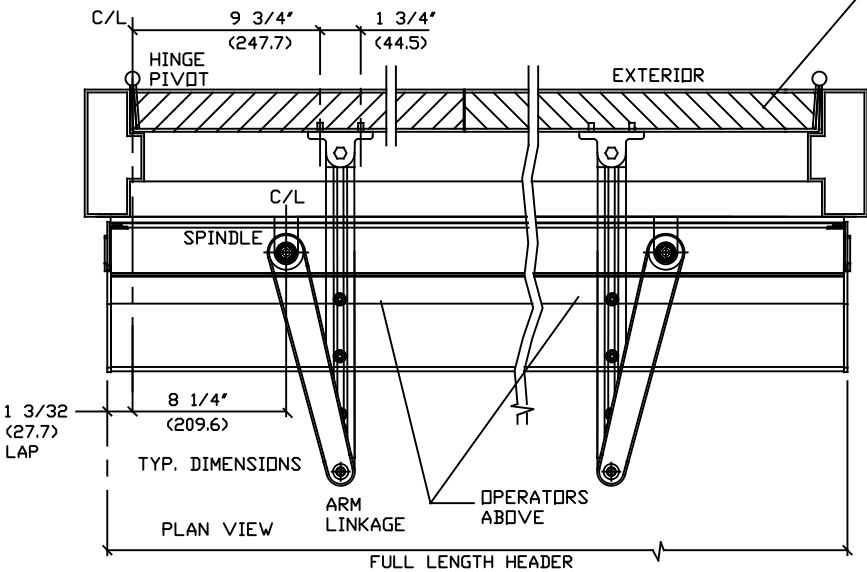


FOR WOOD AND HOLLOW
METAL DOORS: SHOE SHOULD
BE MOUNTED TO DOOR USING
#1/4"-20 BINDING HEAD POST
SCREWS (SEX BOLTS).
HARDWARE FOR DOORS
BY INSTALLER.

HOLLOW METAL OR WOOD
FLUSH DOORS AND FRAME
BY OTHERS.



INTERIOR ELEVATION



PLAN VIEW

FULL LENGTH HEADER

INTERIOR

F.F.L.