

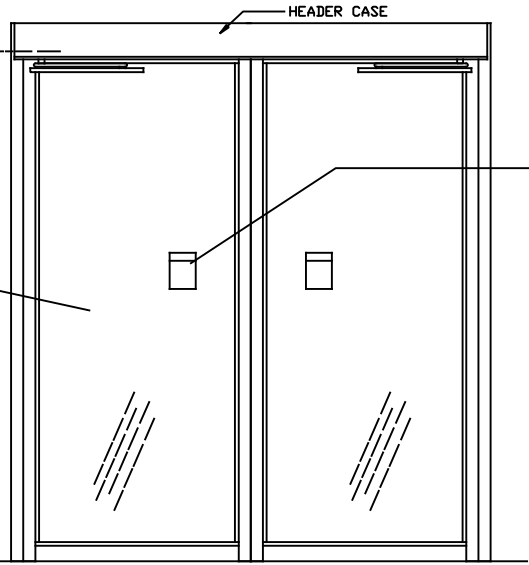
ASSA ABLOY

ASSA ABLOY Entrance Systems
1900 Airport Road
Monroe, NC 28110
Phone: 1-866-237-2687
specdesk.na.besam@assaabloy.com

BESAM SW100 - LOW ENERGY
SURFACE APPLIED PAIR
SWING DOOR OPERATOR
" PULL APPLICATION "

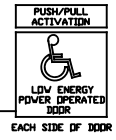


* ELECTRICAL SERVICE
120 VAC, 50/60 HZ.
10A. BY ELEC. CNTR.



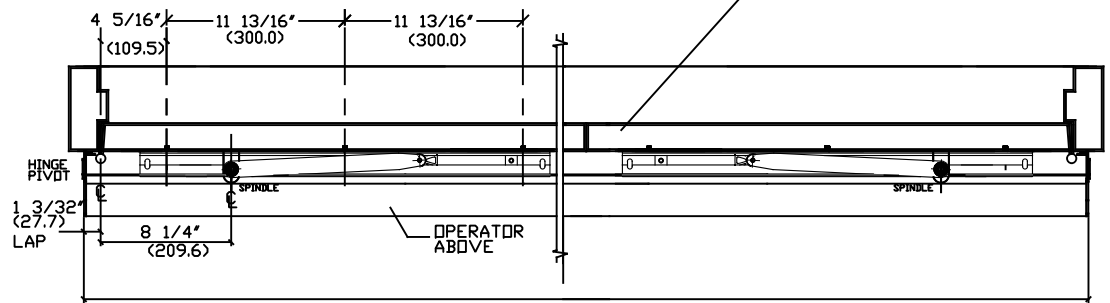
ALUMINUM DOOR
AND FRAME
BY OTHERS.

INTERIOR ELEVATION



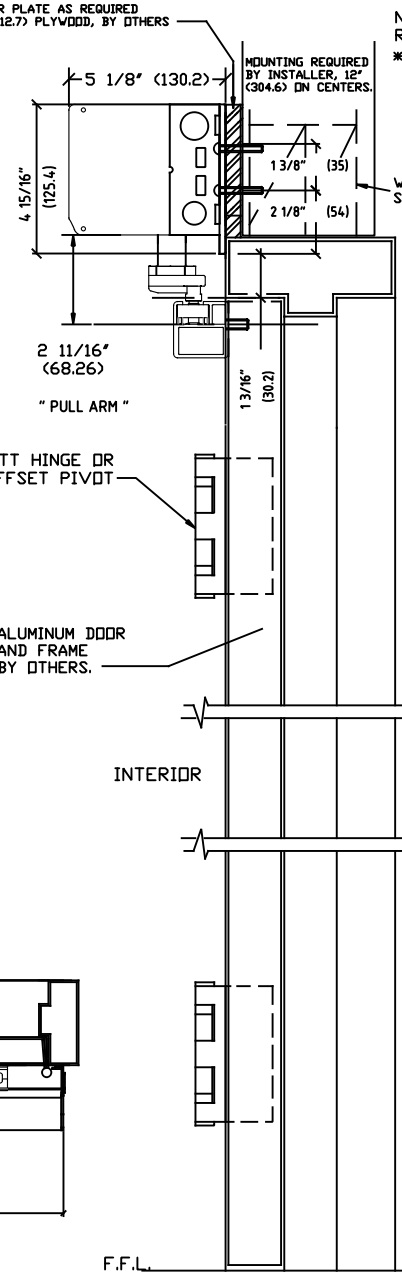
F.F.L.

PLAN EXTERIOR



FULL LENGTH HEADER

FILLER PLATE AS REQUIRED
1/2" (12.7) PLYWOOD, BY OTHERS



MOUNTING REQUIRED
BY INSTALLER, 12"
(304.6) ON CENTERS.

NOTE: DRAWING IS DIMENSIONED IN BOTH ENGLISH AND METRIC.
REF. AS FOLLOWS: 1" (25.4). ALL METRIC SIZES ARE IN MILLIMETERS.
* FOR MAXIMUM CURRENT DRAW PER OPERATOR, SEE PRODUCT
SPECIFICATION OR INSTALLATION INSTRUCTIONS.

EXPLANATION OF USE

MANUAL :-

PUSH OR PULL THE DOOR OPEN AND IT
CLOSES AS A NORMAL MANUAL DOOR CLOSER.

AUTOMATIC :-



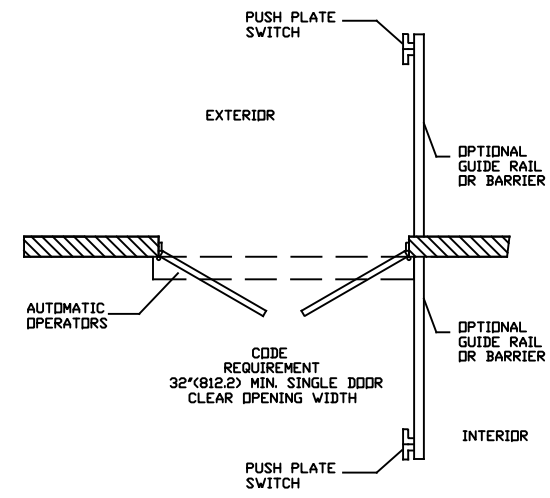
ACTIVATE THE DOOR BY HANDICAPPED
PUSHPLATE AND THE DOOR WILL SLOWLY
POWER OPEN, TIME OUT, AND SLOWLY
CLOSE.

PUSH ACTIVATION :- (OPTIONAL)



PUSH OR PULL THE DOOR AND IT WILL
SLOWLY POWER OPEN, TIME OUT, AND
SLOWLY CLOSE.

NOTE :- OPERATIONAL ADJUSTMENTS TO BE IN
ACCORDANCE WITH ANSI/BHMA STANDARD.
FOR LOW ENERGY POWER
OPERATED DOORS.



PUSH PLATE
SWITCH

EXTERIOR

OPTIONAL
GUIDE RAIL
OR BARRIER

AUTOMATIC
OPERATORS

CODE
REQUIREMENT
32"(812.2) MIN. SINGLE DOOR
CLEAR OPENING WIDTH

OPTIONAL
GUIDE RAIL
OR BARRIER

INTERIOR

PUSH PLATE
SWITCH

DWG NO. 1015920			
DRN BY	DATE	CHK BY	DATE
MHW	10/26/16	SS	10/26/16
REV.	1.0	DATE	

ASSA ABLOY