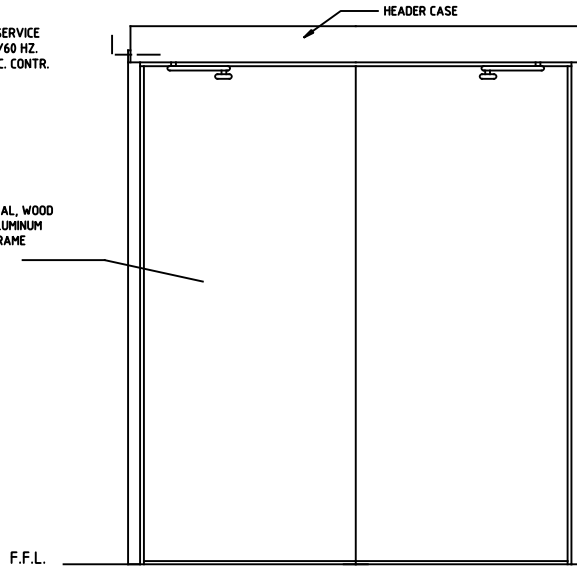


ASSA ABLOY

1900 AIRPORT ROAD
MONROE, NC 28110
TELEPHONE: 866-BESAM-US

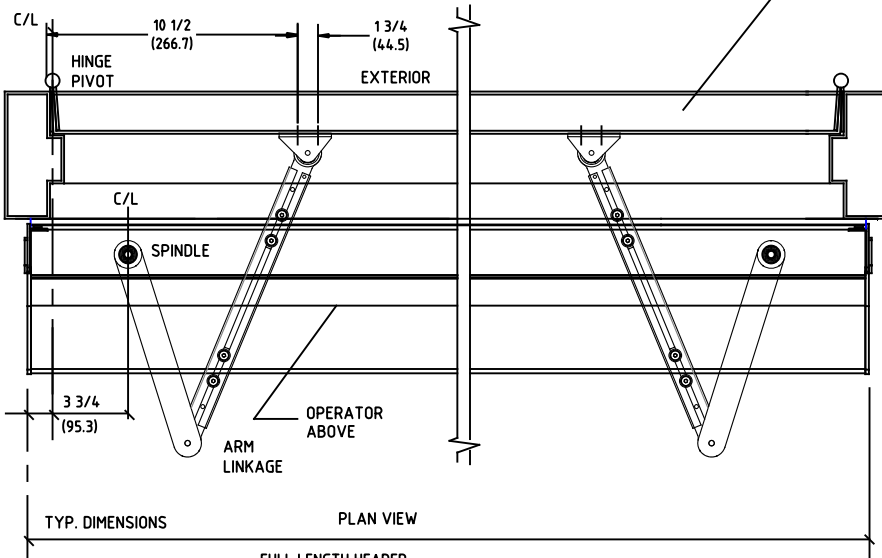
SW200i
SURFACE APPLIED DUAL
SWING DOOR OPERATOR
"PUSH APPLICATION"

x ELECTRICAL SERVICE
120 VAC, 50/60 HZ.
10A. BY ELEC. CONTR.



INTERIOR ELEVATION

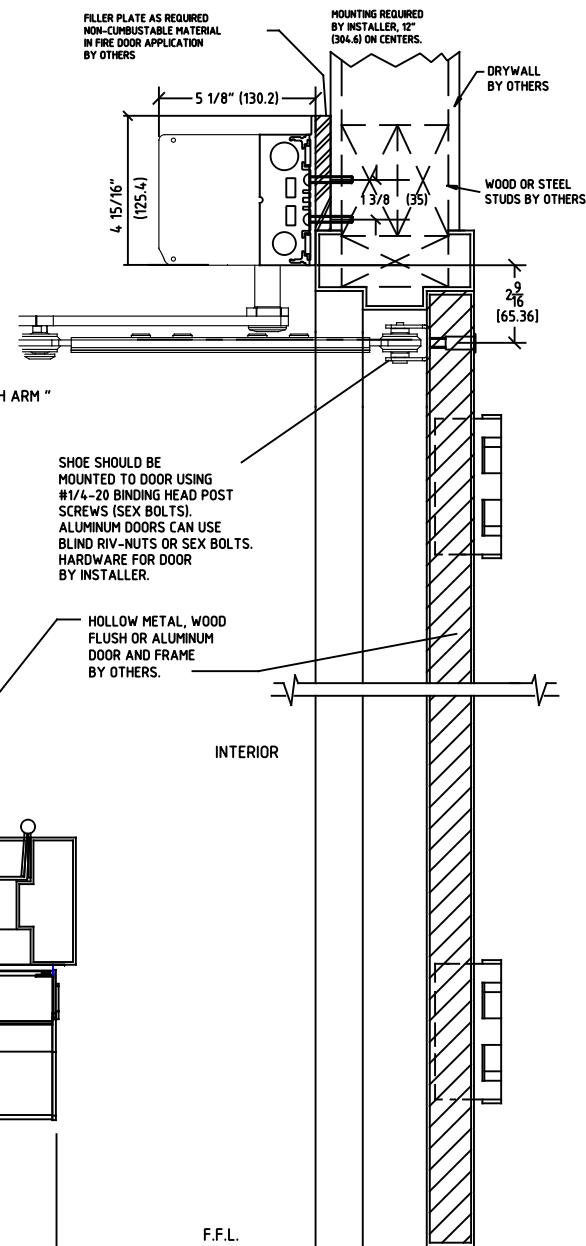
F.F.L.



PLAN VIEW

TYP. DIMENSIONS

1 3/32
(27.7)
LAP



INTERIOR

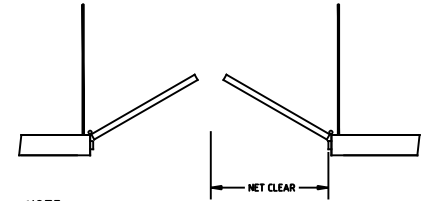
F.F.L.

NOTE:

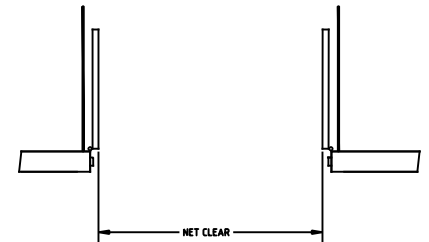
SW200i IS DESIGNED FOR HIGH PERFORMANCE, HEAVY USAGE PEDESTRIAN APPLICATIONS THAT COMPLY WITH ANSI A156.10. THE OPERATOR CAN ALSO BE ADJUSTED FOR LOWER MANUAL PUSH FORCES TO COMPLY WITH ANSI 156.19 AND FIRE DOOR REGULATIONS.

STANDARD FINISH:
CLEAR - AA-C23-A31.
DARK BRONZE - AA-C23-A44
SPECIAL FINISHES ARE AVAILABLE

NOTE: DRAWING IS DIMENSIONED IN BOTH ENGLISH AND METRIC. REF. AS FOLLOWS: 1: (25.4). ALL METRIC SIZES ARE IN MILLIMETERS.



NOTE: x
NET CLEAR (EGRESS MIN 32" (812.8)) SINGLE DOOR



NOTE: x
SINGLE DOOR WIDTH NOT LESS THAN 30".

ENCROACHMENT OF 4" INTO NET CLEAR BY PANIC HARDWARE IS PERMITTED ABOVE 34".

x GUIDE RAILS (SHOWN) ARE REQUIRED ON THE SWINGPATH SIDE OF POWER OPERATED PEDESTRIAN DOORS (ANSI 156.10) BUT NOT ON LOW ENERGY POWER OPERATED DOORS (ANSI 156.19).

DWG. NO.	1015925						
DATE	10/27/16	DATE	10/27/16	REV.	1.0	DATE	
BY	MHW	DATE	10/27/16	CHK BY	SS	DATE	10/27/16

ASSA ABLOY