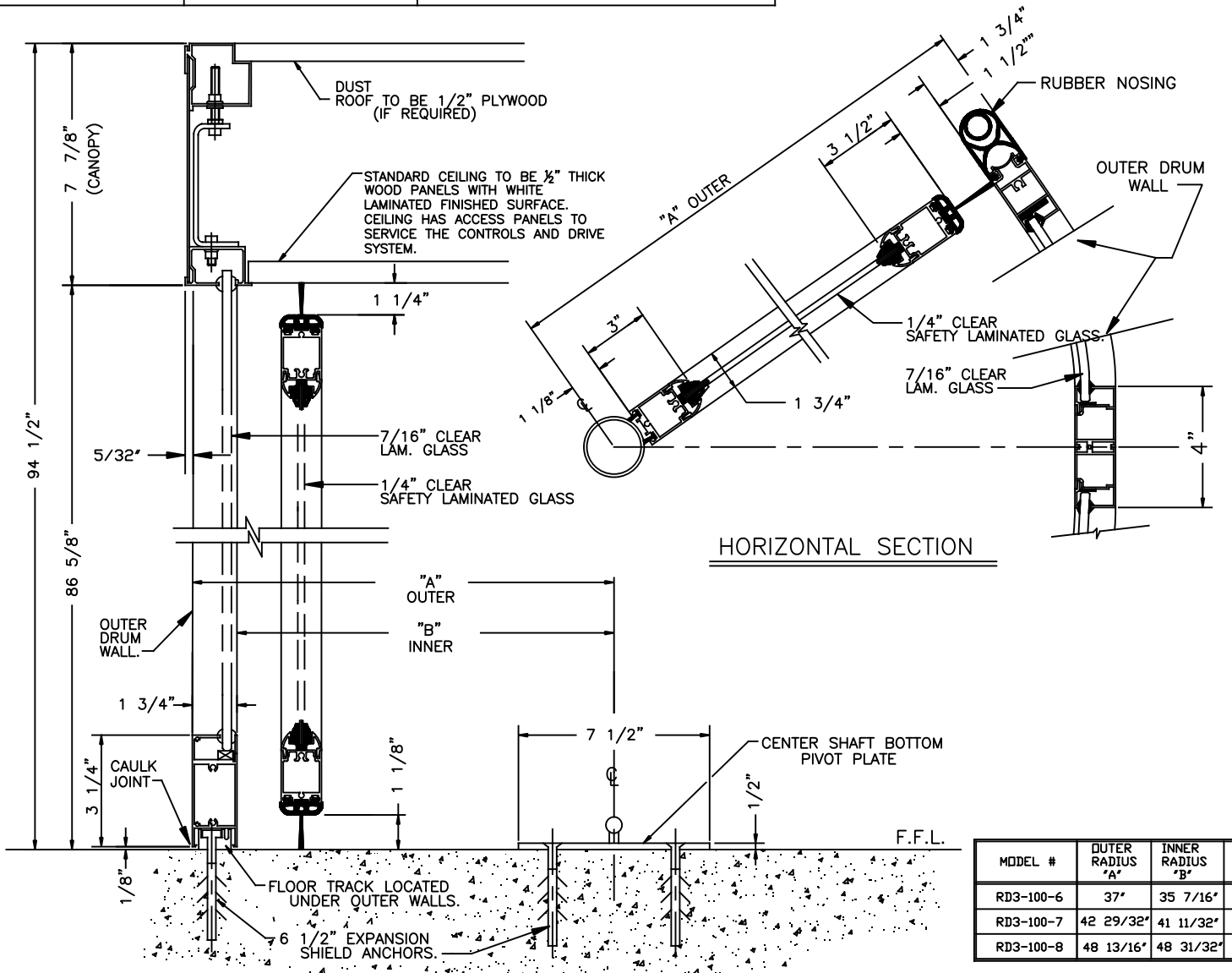


ASSA ABLOY

ASSA ABLOY Entrance Systems
1900 Airport Road
Monroe, NC 28110
Phone: 1-866-237-2687
specdesksna.aaes@assaabloy.com

ASSA ABLOY RD3-100 MANUAL
REVOLVING DOOR
DIAMETER
SECTION VIEW



VERTICAL SECTION

HORIZONTAL SECTION

MODEL #	OUTER RADIUS "A"	INNER RADIUS "B"	OVERALL FASCIA HEIGHT
RD3-100-6	37"	35 7/16"	94 1/2"
RD3-100-7	42 29/32"	41 11/32"	94 1/2"
RD3-100-8	48 13/16"	48 31/32"	94 1/2"

NOTE: FOR SPECIAL HEIGHT PACKAGES CONTACT FACTORY

NOTES
ALL CENTER SHAFT REVOLVING DOOR SYSTEMS SHOULD BE INSTALLED ON A LEVEL FLOOR SURFACE. WE REQUIRE THE FLOOR TO BE WITHIN 1/4" TOLERANCE ACROSS THE FOOTPRINT OF THE DOOR SYSTEM. ASSA ABLOY MD SERIES DOORS ARE DESIGNED TO MOUNT ON A FINISHED FLOOR SURFACE, THE FLOOR AREA SHOULD BE CAPABLE OF HANDLING WEIGHT LOADS OF 600 LBS AT THE CENTER OF THE DOOR (CENTER SHAFT CONNECTION) & 1000 LBS LOAD EVENLY DISTRIBUTED ACROSS THE OUTSIDE DRUM WALLS. ALL ASSA ABLOY DOOR SYSTEMS INCLUDE SPEED CONTROL SYSTEM. GLAZING:

- * 7/16" CLEAR CURVED SAFETY LAMINATED FOR FIXED OUTSIDE WALLS.
- * 1/4" CLEAR SAFETY LAMINATED GLASS FOR ROTATING DOORS.

- MATERIALS:**
- * ALL ALUMINUM PROFILES TO BE .125" THICK (NOMINAL THICKNESS).
 - * ALUMINUM EXTRUSION SYSTEM USED THROUGHOUT.
 - * ALL CURVED SECTIONS ARE STRETCH FORMED.
- FINISHES: { AS SPECIFIED }**
- ___ RAL POWDERCOAT PAINT.
 - ___ #8 BRUSHED STAINLESS STEEL CLAD
 - ___ #4 MIRRORRED STAINLESS STEEL CLAD
 - ___ KYNAR PAINT # _____
 - ___ OTHER _____

- CEILING OPTIONS:**
- STANDARD - WHITE MELAMINE LAMINATED
 - COLOR LAMINATED
 - IMITATION METAL LAMINATED MATCHING CLEAR ANODIZED BRUSHED STAINLESS STEEL

- FEATURES:**
- * RETURN TO HOME SPEED CONTROL SYSTEM. THIS FEATURE WILL ROTATE THE DOORS AT A SLOW RATE OF SPEED TO POSITION THE DOOR WINGS AT THEIR PROPER RESTING POSITION. THIS REDUCES AIR INFILTRATION INTO THE BUILDING.
 - * SMART ASSIST FUNCTION TO REDUCE MANUAL PUSH FORCE FOR EASIER OPERATION

- SECURITY:**
- * TWO MANUAL FLOOR LOCKS SUPPLIED.
- OPTIONAL FEATURE:**
- * RECESSED CEILING LIGHTING, 6 EACH LED LIGHT FIXTURES.

DWG NO. RD3-100	SHEET 2 OF 2				
DRN BY M.H.W	DATE 10/4/13	CHK BY	DATE 5/15/17	REV. B	DATE 5/15/17

ASSA ABLOY RD3-100 MANUAL
REVOLVING DOOR
SECTION VIEW

ASSA ABLOY
ASSA ABLOY Entrance Systems
1900 Airport Road
Monroe, NC 28110
Phone: 1-866-237-2687
specdesksna.aaes@assaabloy.com