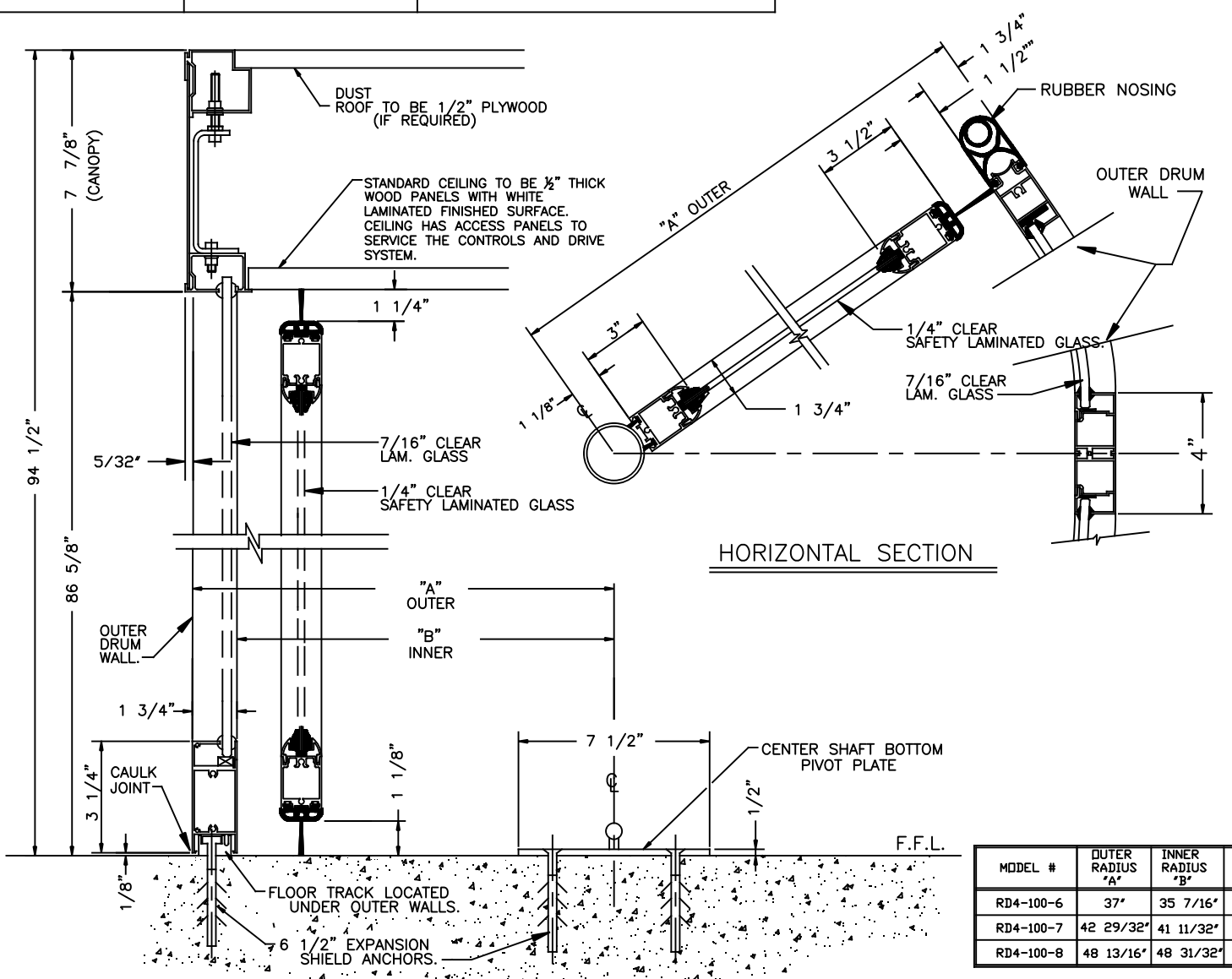


ASSA ABLOY

ASSA ABLOY Entrance Systems
1900 Airport Road
Monroe, NC 28110
Phone: 1-866-237-2687
specdesk.na.aes@assaabloy.com

ASSA ABLOY RD4-100 MANUAL
REVOLVING DOOR
DIAMETER
SECTION VIEW



VERTICAL SECTION

HORIZONTAL SECTION

MODEL #	OUTER RADIUS "A"	INNER RADIUS "B"	OVERALL FASCIA HEIGHT
RD4-100-6	37"	35 7/16"	94 1/2"
RD4-100-7	42 29/32"	41 11/32"	94 1/2"
RD4-100-8	48 13/16"	48 31/32"	94 1/2"

NOTE: FOR SPECIAL HEIGHT PACKAGES CONTACT FACTORY

NOTES

ALL CENTER SHAFT REVOLVING DOOR SYSTEMS SHOULD BE INSTALLED ON A LEVEL FLOOR SURFACE. WE REQUIRE THE FLOOR TO BE WITHIN 1/4" TOLERANCE ACROSS THE FOOTPRINT OF THE DOOR SYSTEM. ASSA ABLOY MD SERIES DOORS ARE DESIGNED TO MOUNT ON A FINISHED FLOOR SURFACE, THE FLOOR AREA SHOULD BE CAPABLE OF HANDLING WEIGHT LOADS OF 600 LBS AT THE CENTER OF THE DOOR (CENTER SHAFT CONNECTION) & 1000 LBS LOAD EVENLY DISTRIBUTED ACROSS THE OUTSIDE DRUM WALLS. ALL ASSA ABLOY DOOR SYSTEMS INCLUDE SPEED CONTROL SYSTEM. GLAZING:

- * 7/16" CLEAR CURVED SAFETY LAMINATED FOR FIXED OUTSIDE WALLS.
- * 1/4" CLEAR SAFETY LAMINATED GLASS FOR ROTATING DOORS.

MATERIALS:

- * ALL ALUMINUM PROFILES TO BE .125" THICK (NOMINAL THICKNESS).
- * ALUMINUM EXTRUSION SYSTEM USED THROUGHOUT.
- * ALL CURVED SECTIONS ARE STRETCH FORMED.

FINISHES: { AS SPECIFIED }

- ___ RAL POWDERCOAT PAINT.
- ___ #8 BRUSHED STAINLESS STEEL CLAD
- ___ #4 MIRRORING STAINLESS STEEL CLAD
- ___ KYNAR PAINT # _____
- ___ OTHER _____

CEILING OPTIONS:

- STANDARD - WHITE MELAMINE LAMINATED
- COLOR LAMINATED
- IMITATION METAL LAMINATED MATCHING CLEAR ANODIZED BRUSHED STAINLESS STEEL

FEATURES:

- * RETURN TO HOME SPEED CONTROL SYSTEM. THIS FEATURE WILL ROTATE THE DOORS AT A SLOW RATE OF SPEED TO POSITION THE DOOR WINGS AT THEIR PROPER RESTING POSITION. THIS REDUCES AIR INFILTRATION INTO THE BUILDING.
- * SMART ASSIST FUNCTION TO REDUCE MANUAL PUSH FORCE FOR EASIER OPERATION

SECURITY:

- * TWO MANUAL FLOOR LOCKS SUPPLIED.
- OPTIONAL FEATURE:
- * RECESSED CEILING LIGHTING, 6 EACH LED LIGHT FIXTURES.

DWG NO.	RD4-100	SHEET	2	OF	2
DRN BY	M.H.W	DATE	10/4/13	CHK BY	DATE
			5/15/17	REV.	B
				DATE	5/15/17

ASSA ABLOY RD4-100 MANUAL
REVOLVING DOOR
SECTION VIEW

ASSA ABLOY
ASSA ABLOY Entrance Systems
1900 Airport Road
Monroe, NC 28110
Phone: 1-866-237-2687
specdesk.na.aes@assaabloy.com