

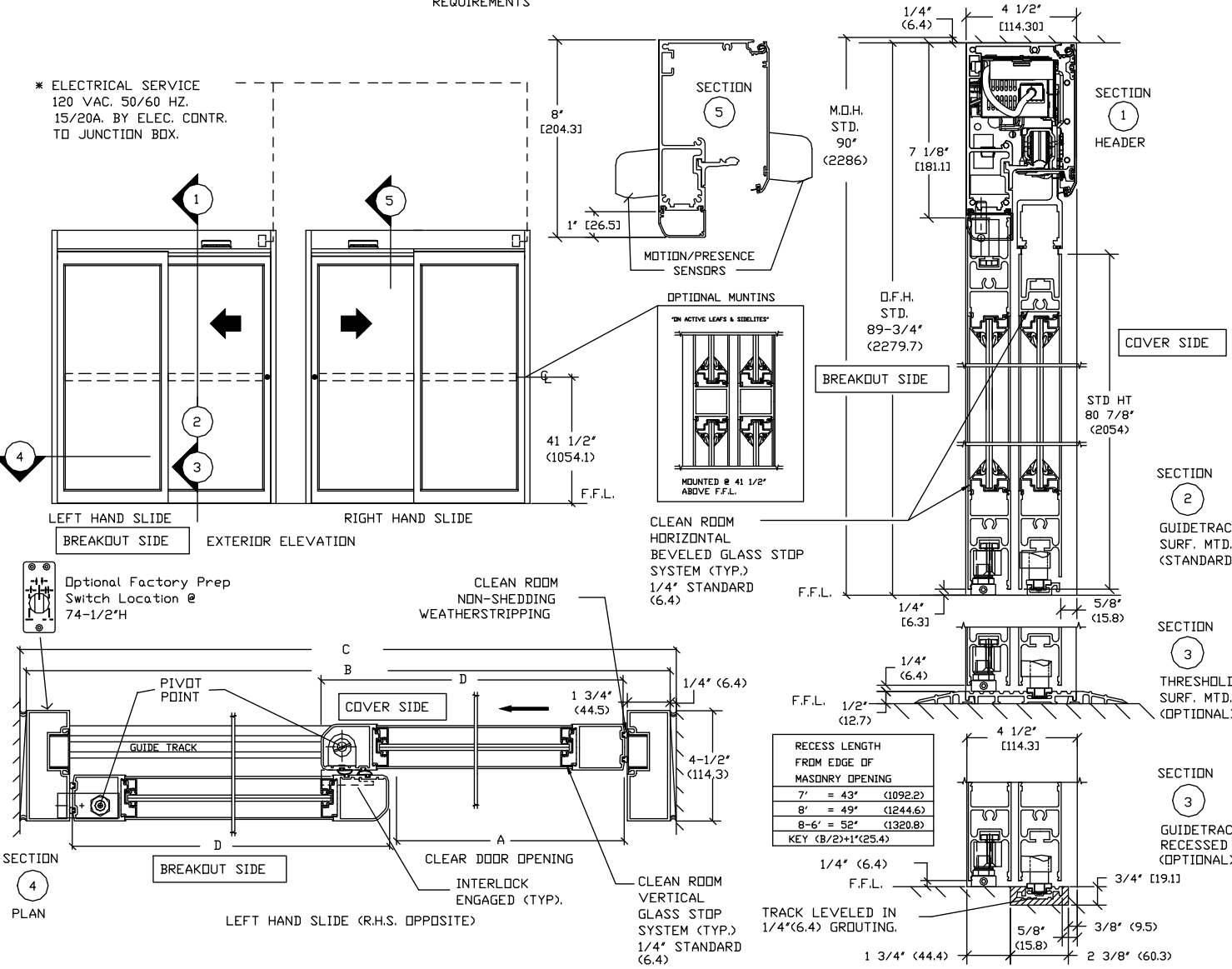
ASSA ABLOY

ASSA ABLOY Entrance Systems
1900 Airport Road
Monroe, NC 28110
Phone: 1-866-237-2687
specdesk.na.besam@assaabloy.com

**BESAM SL500 CLEAN ROOM
OVERHEAD CONCEALED FULL BREAKOUT
NARROW STILE SINGLE SLIDE DOOR SYSTEM**

*PACKAGE MEETS ISO 3 (CLASS 1)
REQUIREMENTS

* ELECTRICAL SERVICE
120 VAC, 50/60 HZ.
15/20A. BY ELEC. CNTR.
TO JUNCTION BDX.



NOTE: THE STANDARD PACKAGE CONSISTS OF:
THE AUTOMATIC OPERATOR & NON-SHEDDING WEATHERSTRIP, FRAMES,
DOORS & SIDELITES WITH VERTICAL NON-SHEDDING WEATHERSTRIP,
EMERGENCY BREAKAWAY. OPTIONAL POSITION SWITCH (DIGITAL (3 DR 5)
OR KEY (5)), (OFF-EXIT ONLY-AUTO-REDUCED OPENING-HOLD OPEN OR
OFF, AUTO, HOLD OPEN), MOTION/PRESENCE SENSORS.

OPTIONAL: ELBOW ACTIVATION SWITCH, BESAM ELECTRICAL CARRIAGE
LOCK.

STANDARD FINISH: CLEAR- AA-M12C22A41, CLASS 1, .018 MM.
DARK BRONZE- AA-M12C22A44, CLASS 1, .018 MM.
SPECIAL FINISHES ARE AVAILABLE.

NOTE DRAWING IS DIMENSIONED IN BOTH ENGLISH AND METRIC
REF. AS FOLLOWS 1" (25.4) ALL METRIC SIZES ARE MILLIMETERS.

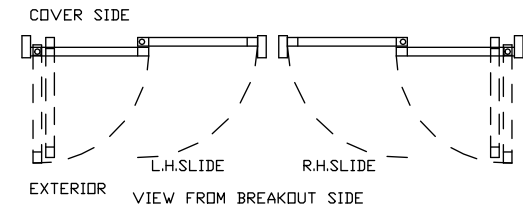
* FOR MAXIMUM CURRENT DRAW PER OPERATOR, SEE PRODUCT SPECIFICATION,
INSTALLATION INSTRUCTIONS, OR THE UL
LABEL ON THE EQUIPMENT.

REFER TO RELEVANT (LOCAL, STATE, NATIONAL OR AHJ) BUILDING CODE FOR
MIN DOOR HEIGHT & MIN/MAX WIDTH ALLOWABLE
FOR EGRESS REQUIREMENT IN CONJUNCTION WITH TABLE BELOW.

SL500 DHC	DOOR OPENING A	OVERALL FRAME WIDTH B	MASONRY OPENING WIDTH		ACTIVE & SIDELITE LEAF WIDTH D
			C	E	
7'	35 1/4" (895.4)	84" (2133.6)	84 1/2" (2146.3)	41 1/2" (1054.1)	
8'	41 1/4" (1047.8)	96" (2438.4)	96 1/2" (2451.1)	47 1/2" (1206.5)	
8'-6"	44 1/4" (1124)	102" (2590.8)	102 1/2" (2603.5)	50 1/2" (1282.7)	
9'	47 1/4" (1200.2)	108" (2743.2)	108 1/2" (2755.9)	53 1/2" (1358.9)	
KEY	(B/2)-6 3/4" (B/2)-(171.5)	(C-1/2") (C-12.7)	(B+1/2)(B/2)-1/2" (B+12.7)		

STANDARD GLASS SIZES ARE AS FOLLOWS:

SL500 DHC	GLASS SIZE	WIDTH	HEIGHT
	1/4" (6.4)	36 5/8" (930.3)	73 7/8" (1876.4)
7'		42 5/8" (1082.7)	73 7/8" (1876.4)
8'		45 5/8" (1158.9)	73 7/8" (1876.4)
8'-6"		48 5/8" (1235.1)	73 7/8" (1876.4)
9'		51 5/8" (1311.3)	73 7/8" (1876.4)
KEY		(B/2)-5 3/8" (B/2)-(136.5)	(D/2)-15 7/8" (D/2)-(403.2)



DWG NO: 1011262

DRN BY: CLW	DATE: 8/26/13	CHK BY: SS	DATE: 8/26/13	REV: 3.0	DATE: 5/28/14
-------------	---------------	------------	---------------	----------	---------------

ASSA ABLOY