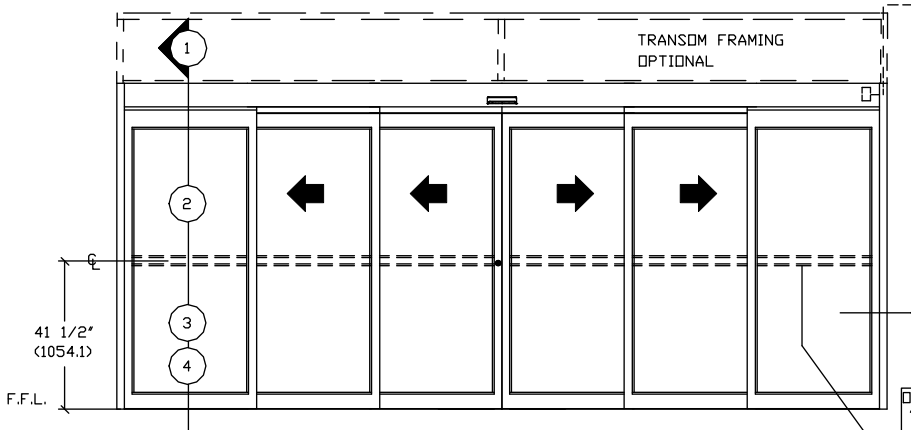


ASSA ABLOY

ASSA ABLOY Entrance Systems
1900 Airport Road
Monroe, NC 28110
Phone: 1-866-237-2687
specdesk.na.besam@assaabloy.com

BESAM SL500
CONCEALED, FULL BREAKOUT, BI-PART
TELESCOPIC SLIDING DOOR SYSTEM

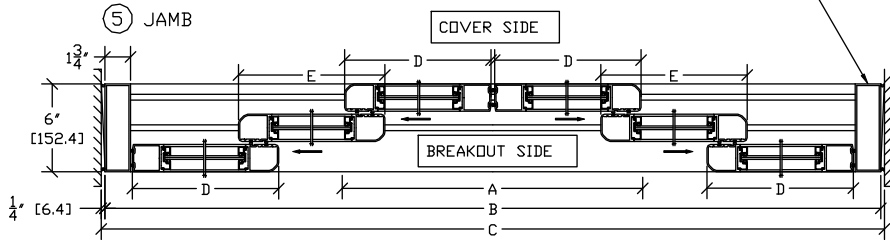
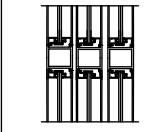
ELECTRICAL SUPPLY
110 VAC, 60 HZ, 10A.
BY ELEC. CONTR. TO
JUNCTION BOX.



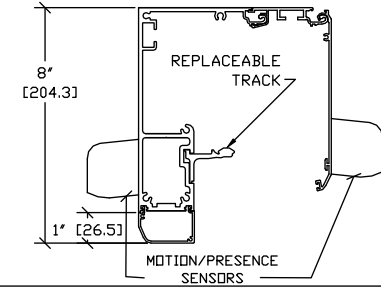
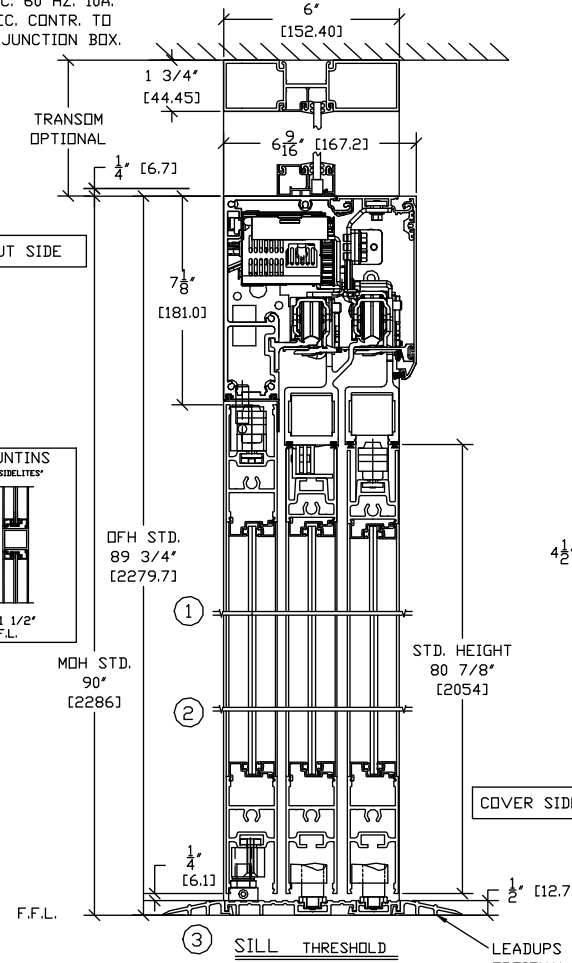
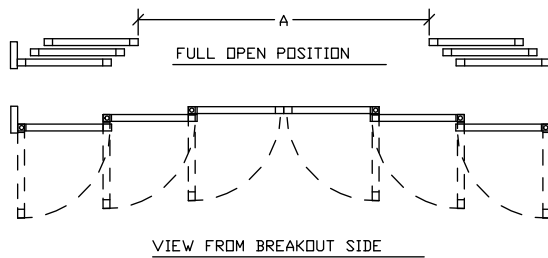
BREAKOUT SIDE EXTERIOR ELEVATION

Optional Factory Prep
Switch Location @
74-1/2"H

OPTIONAL MUNTINS
'ON ACTIVE LEAF'S & SIDELITES'



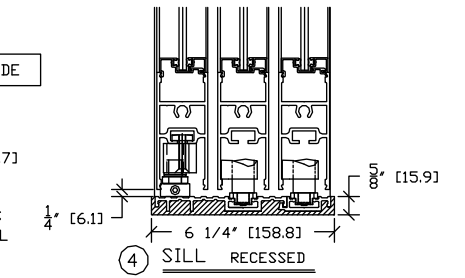
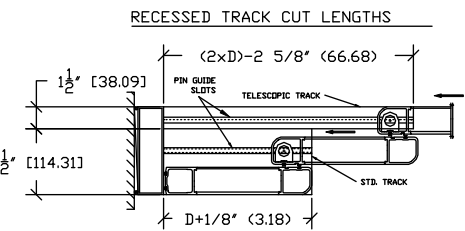
SL500 DHC	DOOR OPENING A	OVERALL FRAME WIDTH B	MASONRY OPENING WIDTH C	ACTIVE & SIDELITE LEAF WIDTH D & E
10'	59 3/16" (1503.4)	120" (3048)	120 1/2" (3067.7)	21 3/16" (538.2)
12'	75 3/16" (1909.8)	144" (3657.6)	144 1/2" (3670.3)	25 3/16" (639.8)
14'	91 3/16" (2316.2)	168" (4267.2)	168 1/2" (4279.9)	29 3/16" (741.4)
16'	107 3/16" (2726.6)	192" (4876.8)	192 1/2" (4889.5)	33 3/16" (843)
KEY	(2B/3)-20 13/16 (2B/3)-(928.6)	(C-1/2") (C-12.7)	(B+1/2") (B+12.7)	(B/6)+1 3/16" (B/6)+(38.2)
STD. GLASS SIZE KEY**	WIDTH - 'D' & 'E'	(B/6)-3 5/8" (B/6)-(92.8)		
	WIDTH - 'E'	(B/6)-3 7/8" (B/6)-(98.43)		
	HEIGHT	DFH-15 7/8" DFH-(403.2)		



NOTE: THE STANDARD PACKAGE CONSISTS OF:
THE AUTOMATIC OPERATOR & WEATHERSTRIP; FRAMES, DOORS
& SIDELITES WITH VERTICAL WEATHERSTRIP; EMERGENCY
BREAKAWAY, 2-POINT LOCK; OPTIONAL POSITION SWITCHES (DIGITAL (3 OR 5)
OR KEY); (OFF-EXIT ONLY-AUTO-REDUCED OPENING-HOLD OPEN DROFF, AUTO,
HOLD OPEN), MOTION/PRESENCE SENSORS. DUAL BEAMS ARE INCLUDED FOR
PACKAGES WITH AN DFW
GREATER THAN 12'.

STANDARD FINISH CLEAR- AA-M12C22A41, CLASS 1, .018 MM.
DARK BRONZE- AA-M12C22A44, CLASS 1, .018 MM.
SPECIAL FINISHES ARE AVAILABLE.

THIS PACKAGE WILL ACCEPT UP TO 1"(25.4) INSULATED GLASS.
GLASS OVER 1/4" WILL REQUIRE THE HEADER TO BE SUPPORTED
FROM ABOVE.
NOTE: DRAWING IS DIMENSIONED IN BOTH ENGLISH AND METRIC
REF. AS FOLLOWS 1" (25.4) ALL METRIC SIZES ARE MILLIMETERS.
FOR MAXIMUM CURRENT DRAW PER OPERATOR, SEE PRODUCT SPECIFICATION,
INSTALLATION INSTRUCTIONS, OR THE UL
LABEL ON THE EQUIPMENT.
REFER TO RELEVANT (LOCAL, STATE, NATIONAL OR AHJ) BUILDING CODE FOR MIN
DOOR HEIGHT & MIN/MAX WIDTH ALLOWABLE
FOR EGRESS REQUIREMENT IN CONJUNCTION WITH TABLE BELOW.



DWG NO. 1010833							
DRN BY	CLW	DATE	6/4/13	CHK BY	SS	DATE	6/4/13
		REV.	3.0			DATE	5/28/14
<p>ASSA ABLOY</p>							

** NARROW STILE RAILS W/ 1/4" GUTTER, NO MUNTINS