

**ASSA ABLOY**

ASSA ABLOY Entrance Systems  
1900 Airport Road  
Monroe, NC 28110  
Phone: 1-866-237-2687  
specdesk.na.besam@assaabloy.com

**BESAM SW200i -IG  
In Ground SW200i-IG Operator  
Offset Pivot, Single Door**

**NOTE:**

1. The SW200i-IG In Ground Operator is designed for pedestrian and ADA applications that require manual push forces to comply with ANSI 156.19 and fire door regulations.

Maximum door weight 700lb [340 kg]

Bottom Arm compatibility:

See FTS 13-001 for complete list of compatible bottom arms

2. SW200i-IG In Ground Operator requires purchase of SW200i Operator, a SW200i-IG installation kit and an Output Shaft Adaptor. Doors, Door Arms and threshold by others. Besam Center Pivot included if selected.

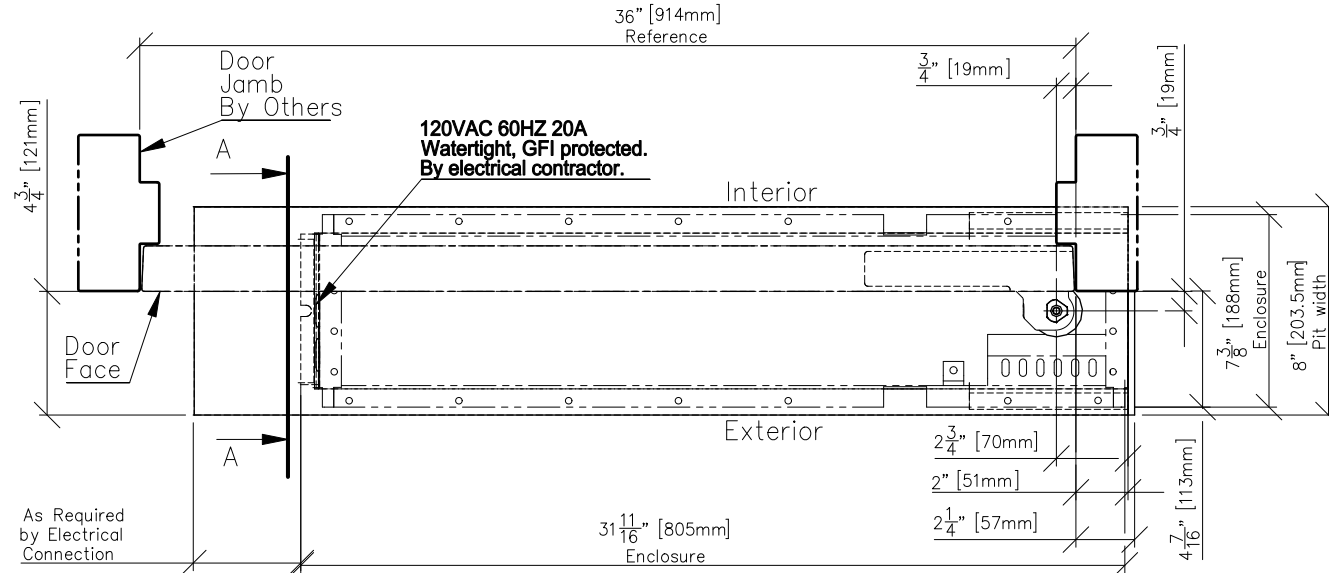
3. SW200i Power/Reset switch is mounted within the In Ground enclosure. Alternative optional Switch mounting for 3 position on/off/hold, or 4 position off/two way/one-way/hold will be required on the door frame or optional remote box.

4. Specify and order the required SW200i compatible Output Shaft Adaptor per Table 1 below and Besam SW200i-IG Installation Manual 1009955. Door bottom arm mortise depth may vary, reference Output adaptor description in Besam SW200i-IG Installation Manual 1009955.

5. The SW200i-IG enclosure is splash proof when correctly assembled. It is essential the pit is drained or provided with a sump pump to prevent water accumulation in the pit.

6. Finish of IG Enclosure is Black Powder Coat suitable for masonry exposure. All exterior hardware is Stainless Steel.

7. Optional Sensor Kits are available.



Switch or knowing act activation connection watertight fitting required

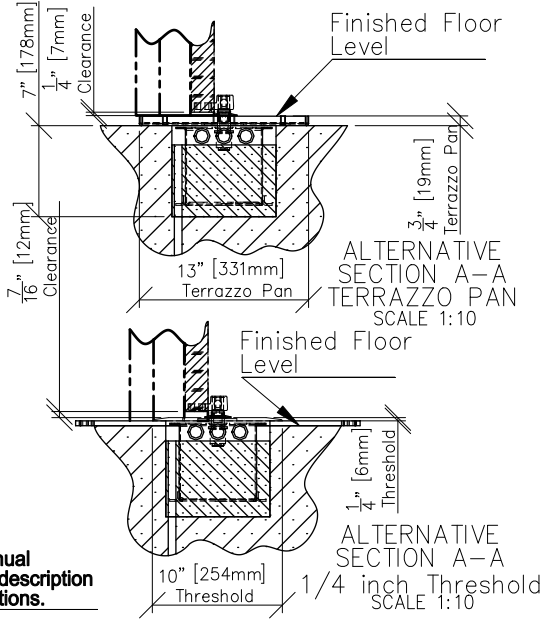
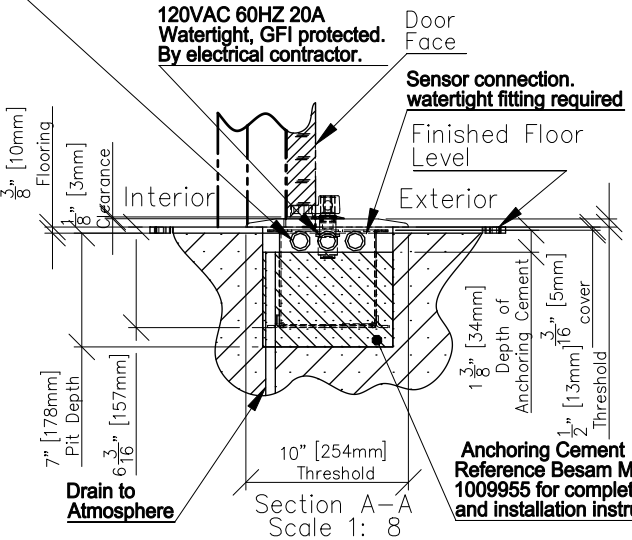


Table 1 3/4" Offset Pivot compatible arms and adaptors

7/8" Diameter Triangular Output Adaptor	Rixson Offset Pivot Arm
	Top load---700lb [318 kg]
	Rixson L27 compatible: various door thicknesses. By others
Select for	
1/4" [6.4mm] thick threshold	Besam # 1010959
1/2" [12.7mm] thick threshold	Besam #1010959
3/4" [19.1mm] Terrazzo pan	Besam # 1010815

DWG. NO. 1010916  
DRN BY mdv DATE 05/29/13 CHK BY DATE xx/xx/xx REV 1.0 DATE 5/30/14

**ASSA ABLOY**