

**ASSA ABLOY**

ASSA ABLOY Entrance Systems  
1900 Airport Road  
Monroe, NC 28110  
Phone: 1-866-237-2687  
specdesk.na.besam@assaabloy.com

**BESAM SW200i OHC WITH DOORS  
DUAL (OHC) OVERHEAD SIDE ACCESS  
SWING DOOR OPERATOR(S)**

**NOTE:**

PACKAGE INCLUDES AUTOMATIC OPERATOR, CONTROLLER, CONCEALED ARM, ALUMINUM DOOR PACKAGE AND SENSOR SYSTEM PER YOUR SELECTION. SEE I-ADAPT DRAWINGS 1010265 AND 1010266 FOR DETAILS ON SENSOR SYSTEM.

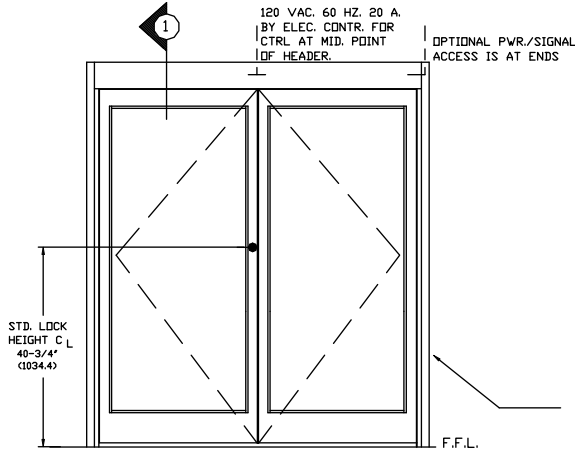
- \* & \*\* CONSULT FACTORY
- \* UNDER 74" (1880) & OVER 98" (2489)
- \*\* UNDER 37" (940) & OVER 49" (1245)

NET CLEAR DOOR OPENINGS FOR 36" & 42" DOORS IN THE OPEN POSITION ARE 32-1/8" & 38-1/8" RESPECTIVELY (OR BY FORMULA: DOOR SIZE-3.87")  
NOTE: EGRESS CLEARANCES MAY BE COMPROMISED BY EXTRA OR ADDITIONAL SURFACE MOUNTED HARDWARE. (SUCH AS PANICS).

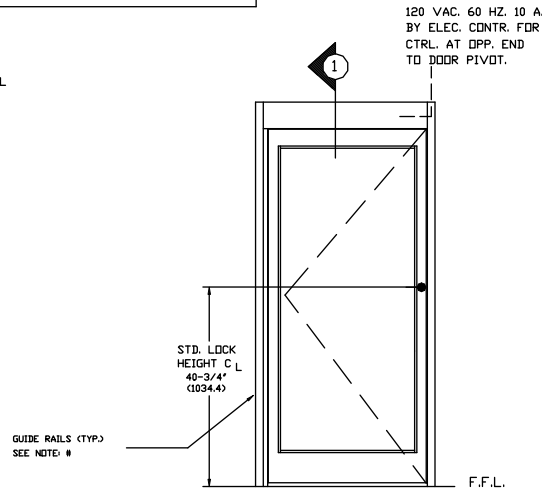
SW200i IS DESIGNED FOR HIGH PERFORMANCE, HEAVY USAGE PEDESTRIAN APPLICATIONS THAT COMPLY WITH ANSI A156.10. THE OPERATOR CAN ALSO BE ADJUSTED FOR LOWER MANUAL PUSH FORCES TO COMPLY WITH ANSI 156.19 AND FIRE DOOR REGULATIONS.

STANDARD FINISH:  
CLEAR - AA-M12C22A41, CLASS 1, .018 MM  
DARK BRONZE - AA-M12C22A44, CLASS 1, .018 MM  
SPECIAL FINISHES ARE AVAILABLE

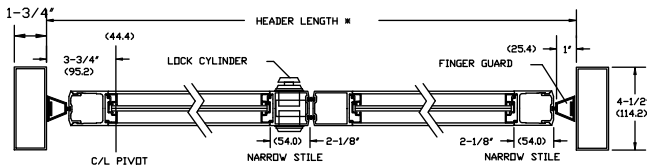
NOTE: DRAWING IS DIMENSIONED IN BOTH ENGLISH AND METRIC. REF. AS FOLLOWS: 1" (25.4). ALL METRIC SIZES ARE IN MILLIMETERS.



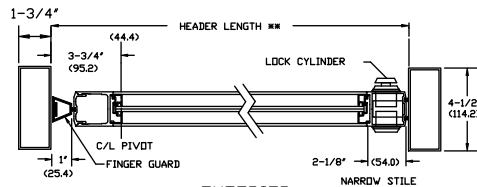
EXTERIOR ELEVATION  
SW200i  
OHC (DUAL)



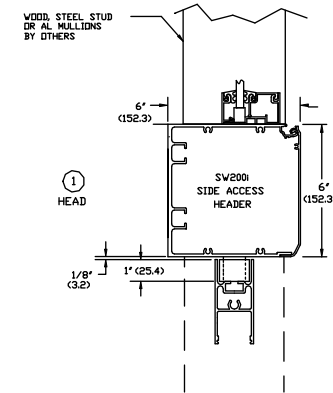
EXTERIOR ELEVATION  
(L.H. SHOWN/R.H. OPPOSITE)  
SW200i  
OHC (SINGLE)



EXTERIOR

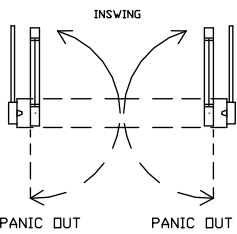


EXTERIOR

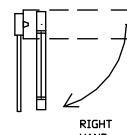
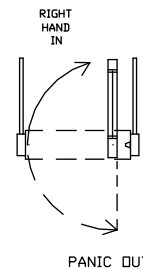
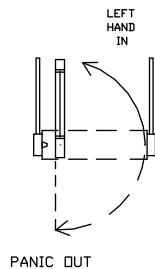
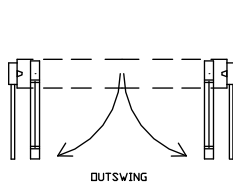


SW200i  
OHC SERIES

**INTERIOR**



EXTERIOR



NOTE: #  
GUIDE RAILS (SHOWN) ARE REQUIRED ON THE SWINGPATH SIDE OF POWER OPERATED PEDESTRIAN DOORS (ANSI 156.10) BUT NOT ON LOW ENERGY POWER OPERATED DOORS (ANSI 156.19).

RIGHT HAND OUT  
LEFT HAND OUT  
GUIDE RAILS OR BARRIERS (TYP)

DWG NO.	1009985
DRN BY	SS
DATE	12/14/12
CHK BY	JAW
DATE	12/14/12
REV.	2.0
DATE	5/30/14

**ASSA ABLOY**