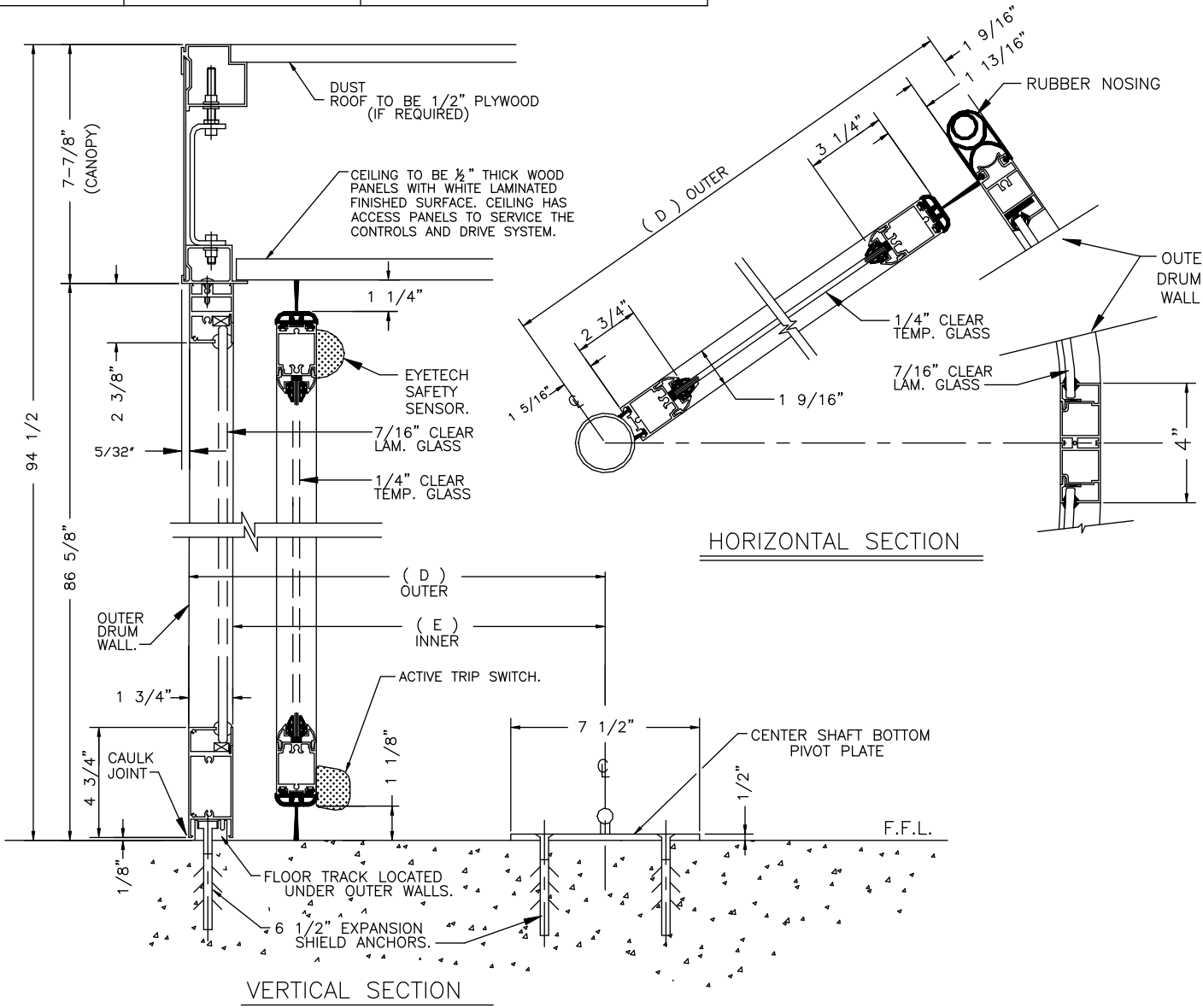


ASSA ABLOY

ASSA ABLOY Entrance Systems
1900 Airport Road
Monroe, NC 28110
Phone: 1-866-237-2687
specdesk.na.besam@assaabloy.com

BESAM RD3 REVOLVING DOOR SYSTEM SECTION VIEW

MODEL #	OUTER RADIUS (D)	INNER RADIUS (E)
RD3-8'	48 13/16"	47 1/4"
RD3-9'	54 23/32"	53 5/32"
RD3-10'	60 5/8"	59 1/16"
RD3-12'	72 7/16"	70 7/8"



- NOTES**
- ALL CENTER SHAFT REVOLVING DOOR SYSTEMS SHOULD BE INSTALLED ON A LEVEL FLOOR SURFACE. BESAM REQUIRES THE FLOOR TO BE WITHIN 1/4" TOLERANCE ACROSS THE FOOTPRINT OF THE DOOR SYSTEM. BESAM RD SERIES DOORS ARE DESIGNED TO MOUNT ON A FINISHED FLOOR SURFACE. THE FLOOR AREA SHOULD BE CAPABLE OF HANDLING WEIGHT LOADS OF 600 LBS AT THE CENTER OF THE DOOR (CENTER SHAFT CONNECTION) & 1000 LBS LOAD EVENLY DISTRIBUTED ACROSS THE OUTSIDE DRUM WALLS.
- STANDARD OPERATING FEATURES:**
- {1} MICROPROCESSOR CONTROL UNIT.
 - {1} PROGRAMMABLE REAL TIME OPERATION CLOCK SYSTEM.
 - {1} PROGRAMMABLE DOOR OPERATION ACCESS CODES.
 - {3} PROGRAMMABLE OPERATIONAL MODES, OFF, CONTINUOUS ROTATION, & SENSOR ROTATION ACTIVATION.
 - {1} SURFACE MOUNTED DIGITAL PROGRAMMING DEVICE "PCD".
 - {1} DIGITAL DIAGNOSTIC DISPLAY UNIT.
 - {1} MASTER KEY SHUT OFF SWITCH FOR LOCK OUT USE.
 - {1} RS-232 COMPUTER ACCESS PORT FOR REMOTE OPERATION & TROUBLESHOOTING.
 - {1} A 600 EVENT MEMORY STORAGE SYSTEM, SHOWS LAST 600 EVENTS OF OPERATION.
 - {2} MOTION SENSOR UNITS PER DOOR, EXCEPT {4} ARE SUPPLIED WITH THE RD3-12' MODEL.
 - {1} WHITE LAMINATED CEILING SYSTEM WITH RECESSED QUARTZ HALOGEN LOW VOLTAGE LIGHTS.
 - {8} LIGHTS IN CEILING, EXCEPT {12} ARE SUPPLIED WITH THE RD3-12' MODEL.
 - {1} DC MOTOR GEAR REDUCTION DRIVE SYSTEM LOCATED ABOVE THE DOOR OPENING.
 - {2} HANDICAPPED-PUSH TO SLOW-PUSH PLATES.
 - {1} EMERGENCY STOP BUTTON.
- STANDARD SAFETY DEVICES:**
- * FIRE ALARM INTERFACE CIRCUIT - REQUIRES NORMALLY CLOSED DRY CONTACTS.
 - * UPS BATTERY SYSTEM THAT CYCLES THE DOOR TO THE EMERGENCY EGRESS POSITION.
 - * SELF MONITORING SAFETY CONTROL SYSTEM THAT CHECKS FOR PROPER OPERATION OF EACH SAFETY DEVICE.
- VERTICAL SAFETY DEVICES:**
- * 2 EACH, COMPRESSIBLE SAFETY SWITCHES LOCATED ON THE OUTER DRUM WALL ENTRANCES.
 - * 2 EACH, PDR SENSORS MOUNTED IN THE FIXED CEILING RING AT THE RIGHT SIDE OF EACH DOOR OPENING.
- HORIZONTAL SAFETY DEVICES:**
- * COMPRESSIBLE SAFETY SWITCHES ON THE BOTTOM OF EACH DOOR WING.
 - * EYETECH SENSORS LOCATED AT THE TOP OF EACH DOOR WING.
- POWER REQUIREMENTS:**
- * 208VAC. TO 240VAC., 20 AMP, 60 HZ DEDICATED CIRCUIT.
- GLAZING:**
- * 7/16" CLEAR CURVED SAFETY LAMINATED FOR FIXED OUTSIDE WALLS.
 - * 1/4" CLEAR FLAT TEMPERED GLASS FOR ROTATING DOORS.
- MATERIALS:**
- * ALL ALUMINUM PROFILES TO BE .125" THICK (NOMINAL THICKNESS).
 - * ALUMINUM EXTRUSION SYSTEM USED THROUGHOUT.
 - * ALL CURVED SECTIONS ARE STRETCH FORMED.
- FINISHES: { AS SPECIFIED }**
- ___ CLEAR ANODIZED.
 - ___ DARK BRONZE ANODIZED.
 - ___ RAL POWDERCOAT PAINT.
 - ___ POLISHED STAINLESS STEEL CLAD
 - ___ #8 MIRROR
 - ___ #4 SATIN
 - ___ KYNAR PAINT # _____
 - ___ OTHER _____

DWG NO. RD3	SHEET 2 OF 2
DRN BY R.O.W. DATE 12/29/05	CHK BY DATE REV. C DATE 5/30/14

BESAM RD3 REVOLVING DOOR SYSTEM SECTION VIEW

ASSA ABLOY

ASSA ABLOY Entrance Systems
1900 Airport Road
Monroe, NC 28110
Phone: 1-866-237-2687
specdesk.na.besam@assaabloy.com