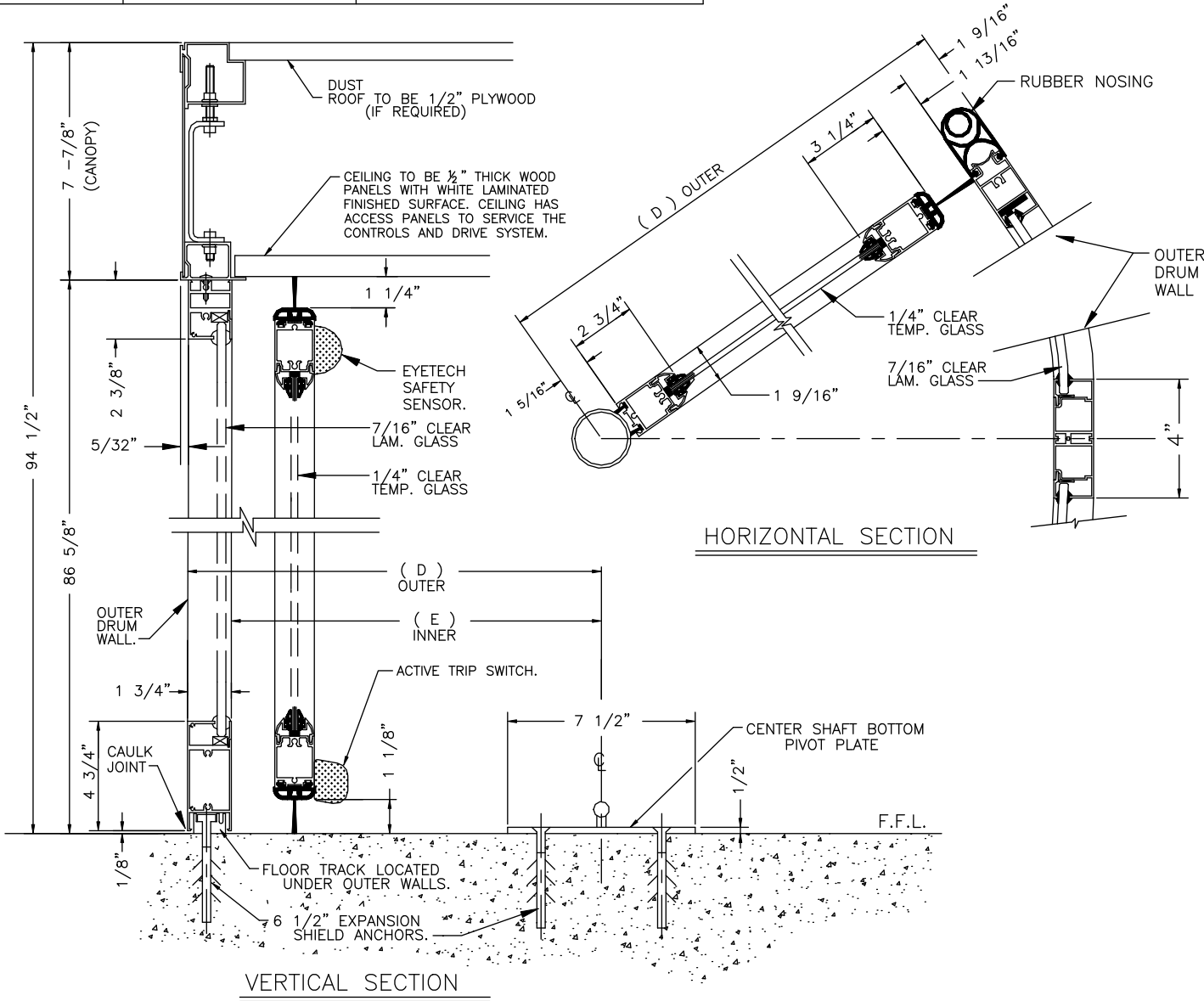


ASSA ABLOY

ASSA ABLOY Entrance Systems
1900 Airport Road
Monroe, NC 28110
Phone: 1-866-237-2687
specdesk.na.besam@assaabloy.com

BESAM RD4
REVOLVING DOOR SYSTEM
SECTION VIEW



MODEL #	OUTER RADIUS (D)	INNER RADIUS (E)
RD4-9'	54 23/32"	53 5/32"
RD4-10'	60 5/8"	59 1/16"
RD4-12'	72 7/16"	70 7/8"

NOTES

ALL CENTER SHAFT REVOLVING DOOR SYSTEMS SHOULD BE INSTALLED ON A LEVEL FLOOR SURFACE. BESAM REQUIRES THE FLOOR TO BE WITHIN 1/4" TOLERANCE ACROSS THE FOOTPRINT OF THE DOOR SYSTEM. BESAM RD SERIES DOORS ARE DESIGNED TO MOUNT ON A FINISHED FLOOR SURFACE, THE FLOOR AREA SHOULD BE CAPABLE OF HANDLING WEIGHT LOADS OF 600 LBS AT THE CENTER OF THE DOOR (CENTER SHAFT CONNECTION) & 1000 LBS LOAD EVENLY DISTRIBUTED ACROSS THE OUTSIDE DRUM WALLS.

STANDARD OPERATING FEATURES:

- {1} MICROPROCESSOR CONTROL UNIT.
- {1} PROGRAMMABLE REAL TIME OPERATION CLOCK SYSTEM.
- {1} PROGRAMMABLE DOOR OPERATION ACCESS CODES.
- {3} PROGRAMMABLE OPERATIONAL MODES, OFF, CONTINUOUS ROTATION, & SENSOR ROTATION ACTIVATION.
- {1} SURFACE MOUNTED DIGITAL PROGRAMMING DEVICE "PCD".
- {1} DIGITAL DIAGNOSTIC DISPLAY UNIT.
- {1} MASTER KEY SHUT OFF SWITCH FOR LOCK OUT USE.
- {1} RS-232 COMPUTER ACCESS PORT FOR REMOTE OPERATION & TROUBLESHOOTING.
- {2} A 600 EVENT MEMORY STORAGE SYSTEM, SHOWS LAST 600 EVENTS OF OPERATION.
- {2} MOTION SENSOR UNITS PER DOOR, EXCEPT {4} ARE SUPPLIED WITH THE RD4-12' MODEL.
- {1} WHITE LAMINATED CEILING SYSTEM WITH RECESSED QUARTZ HALOGEN LOW VOLTAGE LIGHTS.
- {8} LIGHTS IN CEILING, EXCEPT {12} ARE SUPPLIED WITH THE RD4-12' MODEL.
- {1} DC MOTOR GEAR REDUCTION DRIVE SYSTEM LOCATED ABOVE THE DOOR OPENING.
- {2} HANDICAPPED-PUSH TO SLOW-PUSH PLATES.
- {1} EMERGENCY STOP BUTTON.

STANDARD SAFETY DEVICES:

- * FIRE ALARM INTERFACE CIRCUIT - REQUIRES NORMALLY CLOSED DRY CONTACTS.
- * UPS BATTERY SYSTEM THAT CYCLES THE DOOR TO THE EMERGENCY EGRESS POSITION.
- * SELF MONITORING SAFETY CONTROL SYSTEM THAT CHECKS FOR PROPER OPERATION OF EACH SAFETY DEVICE.

VERTICAL SAFETY DEVICES:

- * 2 EACH, COMPRESSIBLE SAFETY SWITCHES LOCATED ON THE OUTER DRUM WALL ENTRANCES.
- * 2 EACH, PDR SENSORS MOUNTED IN THE FIXED CEILING RING AT THE RIGHT SIDE OF EACH DOOR OPENING.

HORIZONTAL SAFETY DEVICES:

- * COMPRESSIBLE SAFETY SWITCHES ON THE BOTTOM OF EACH DOOR WING.
- * EYETECH SENSORS LOCATED AT THE TOP OF EACH DOOR WING.

POWER REQUIREMENTS:

- * 208VAC, TO 240VAC., 20 AMP, 60 HZ DEDICATED CIRCUIT.

GLAZING:

- * 7/16" CLEAR CURVED SAFETY LAMINATED FOR FIXED OUTSIDE WALLS.
- * 1/4" CLEAR FLAT TEMPERED GLASS FOR ROTATING DOORS.

MATERIALS:

- * ALL ALUMINUM PROFILES TO BE .125" THICK (NOMINAL THICKNESS).
- * ALUMINUM EXTRUSION SYSTEM USED THROUGHOUT.
- * ALL CURVED SECTIONS ARE STRETCH FORMED.

FINISHES: { AS SPECIFIED }

- ___ CLEAR ANODIZED.
- ___ DARK BRONZE ANODIZED.
- ___ RAL POWDERCOAT PAINT
- ___ POLISHED STAINLESS STEEL CLAD
- ___ #8 MIRROR
- ___ #4 SATIN
- ___ KYNAR PAINT #
- ___ OTHER #

DWG NO. RD4	SHEET 2 OF 2
DRN BY R.O.W. DATE 12/29/05	CHK BY DATE REV. C DATE 5/30/14

BESAM RD4
REVOLVING DOOR SYSTEM
SECTION VIEW

ASSA ABLOY

ASSA ABLOY Entrance Systems
1900 Airport Road
Monroe, NC 28110
Phone: 1-866-237-2687
specdesk.na.besam@assaabloy.com