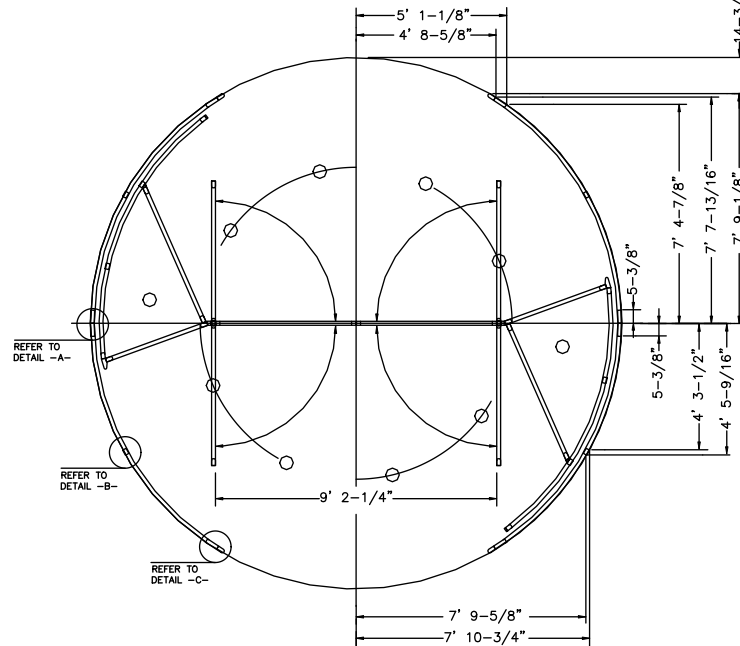
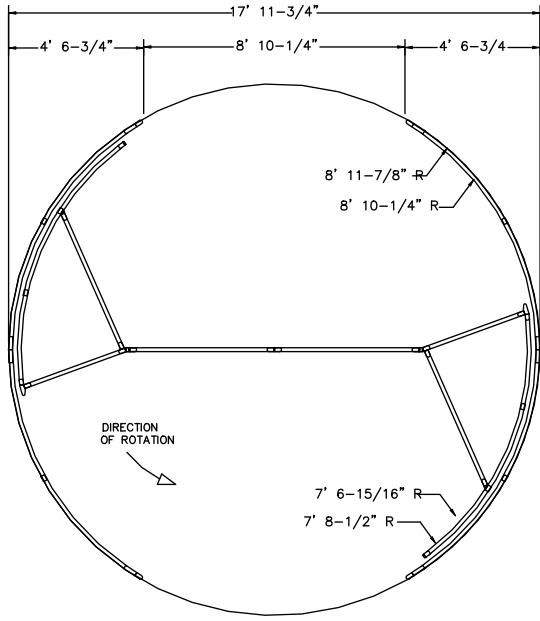
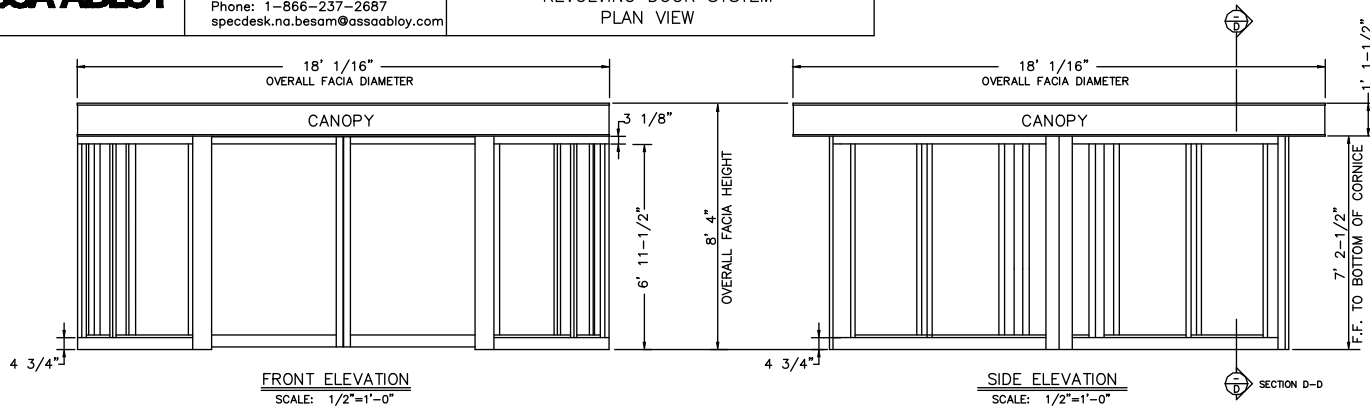


**ASSA ABLOY**

ASSA ABLOY Entrance Systems  
1900 Airport Road  
Monroe, NC 28110  
Phone: 1-866-237-2687  
specdesk.na.besam@assaabloy.com

BESAM UNITURN - 2 - 18'  
2 WING  
REVOLVING DOOR SYSTEM  
PLAN VIEW



NOTES:  
MODEL: UNITURN - 2-18'  
GENERAL CONTRACTOR IS TO ENSURE THAT THE FLOOR IS CONSTRUCTED LEVEL AND FLAT TO WITHIN 1/4\"/>

- STANDARD OPERATING FEATURES:
- \* [1] MICRO PROCESSOR CONTROL UNIT.
  - \* [2] PERIMETER DRIVE UNIT ASSEMBLIES
  - \* [2] PERIMETER DRIVE ELECTRO MAGNETIC BRAKE UNITS
  - \* [2] HANDICAPPED- PUSH TO SLOW- PUSH PLATES.
  - \* [8] PROGRAMMABLE OPERATION MODES
  - \* [4] ACTIVATION MOTION SENSORS
  - \* [1] EMERGENCY STOP PUSH-BUTTON
  - \* [2] EMERGENCY ESCAPE PUSH BUTTONS
  - \* [1] SURFACE MOUNTED DIGITAL PROGRAMMING DEVICE PCD
  - \* [1] DIAGNOSTIC DIGITAL DISPLAY UNIT
  - \* [1] WHITE LAMINATED CEILING SYSTEM
  - \* [12] QUARTZ HALOGEN RECESSED LOW VOLTAGE CEILING LIGHTS
  - \* [2] ROTATING DISPLAY CASES
  - \* [1] PROGRAMMABLE REAL TIME OPERATING CLOCK SYSTEM
  - \* [1] PROGRAMMABLE DOOR OPERATION ACCESS CODES
  - \* [1] MASTER KEY SHUT OFF SWITCH FOR LOCK OUT USE
  - \* [1] RS-232 COMPUTER ACCESS PORT FOR REMOTE OPERATION AND TROUBLESHOOTING.
  - \* [1] 600 EVENT MEMORY STORAGE SYSTEM, SHOWS LAST 600 EVENTS OF OPERATION
  - \* [1] LOCKING OF THE DOOR BY MAGNETIC BRAKE SYSTEM

- STANDARD SAFETY DEVICES
- \* FIRE ALARM INTERFACE CIRCUIT - REQUIRES NORMALLY CLOSED DRY CONTACTS
  - \* UPS BATTERY SYSTEM THAT CYCLES THE DOOR TO THE EMERGENCY EGRESS POSITION DURING POWER FAILURE.
- \* VERTICAL SAFETY DEVICES
- 2EA. 4SAFE INFRARED SAFETY DETECTION SYSTEMS, W/ DUAL RANGE, SLOW AND STOP SAFETY FIELDS.
  - 2EA. PIR SENSORS MOUNTED IN THE FIXED CEILING RING AT RIGHT SIDE OF DOOR OPENING
  - 2EA. COMPRESSIBLE SAFETY SWITCHES ON THE OUTER EDGE OF THE ROTATING WINGS
  - 1EA. FIRE ALARM INTERFACE REQUIRES NORMALLY CLOSED DRY CONTACTS
- \* HORIZONTAL SAFETY DEVICES
- 4EA. COMPRESSIBLE SAFETY SWITCHES ON THE BOTTOM EDGES OF THE WING DOORS
  - SELF MONITORING OF SAFETY SYSTEM EVERY 3 MINUTES BY THE MICROPROCESSOR CONTROL (MPU)
- \* POWER REQUIREMENTS  
220 VAC 20 AMP 60 HZ DEDICATED CIRCUIT
- \* GLAZING  
7/16" CLEAR CURVED SAFETY LAMINATED FOR FIXED OUTSIDE WALLS.  
7/16" CLEAR CURVED SAFETY LAMINATED FOR INTERIOR ROTATING WALLS.  
1/4" CLEAR FLAT SAFETY LAMINATED FOR INTERIOR FLAT DOOR PANELS.
- \* MATERIALS  
ALL ALUMINUM PROFILES TO BE .125" THICK (NOMINAL THICKNESS).  
ALUMINUM EXTRUSION SYSTEM USED THROUGHOUT  
ALL CURVED SECTIONS ARE STRETCH FORMED

- \* FINISHES ( AS SPECIFIED )
- \_\_\_ CLEAR ANODIZED.
  - \_\_\_ DARK BRONZE ANODIZED.
  - \_\_\_ RAL POWDERCOAT PAINT.
  - \_\_\_ POLISHED STAINLESS STEEL CLAD
  - \_\_\_ #8 MIRROR
  - \_\_\_ #4 SATIN
  - \_\_\_ KYNAR PAINT # \_\_\_\_\_
  - \_\_\_ OTHER \_\_\_\_\_

DWG NO. 18 pl - 02	SHEET 1 OF 2
DRN BY DDD	DATE 10/31/08
CHK BY	DATE
REV. F	DATE 5/30/14

BESAM UNITURN - 2 - 18'  
2 WING  
REVOLVING DOOR SYSTEM  
PLAN VIEW

**ASSA ABLOY**  
ASSA ABLOY Entrance Systems  
1900 Airport Road  
Monroe, NC 28110  
Phone: 1-866-237-2687  
specdesk.na.besam@assaabloy.com