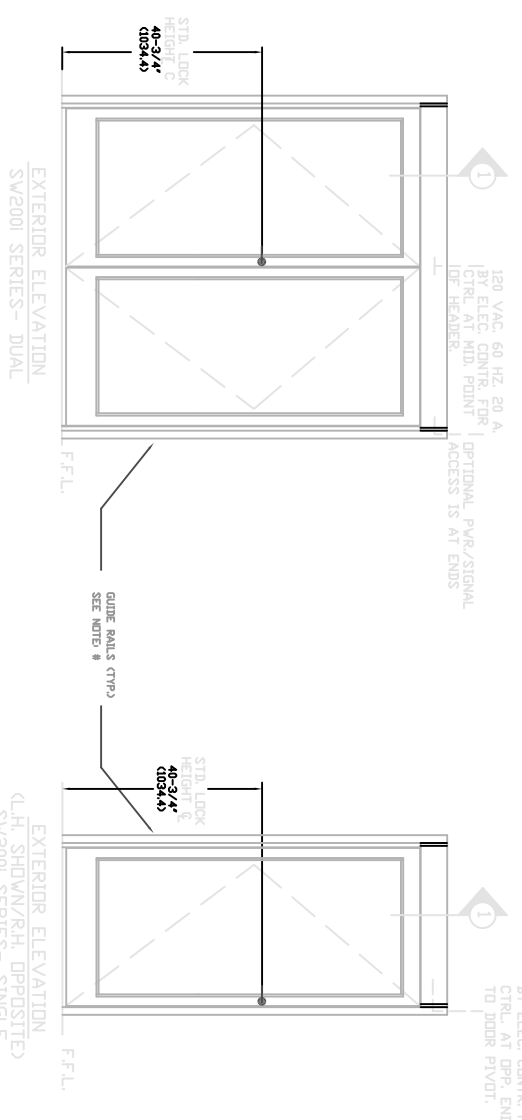
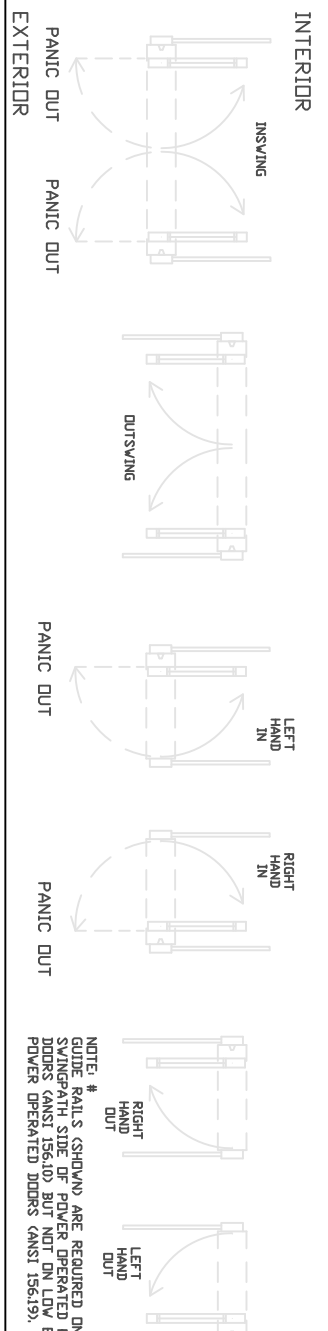
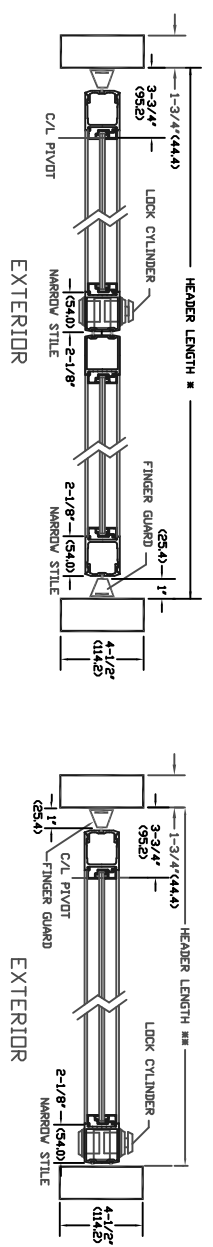
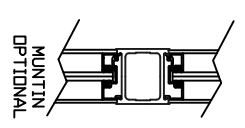


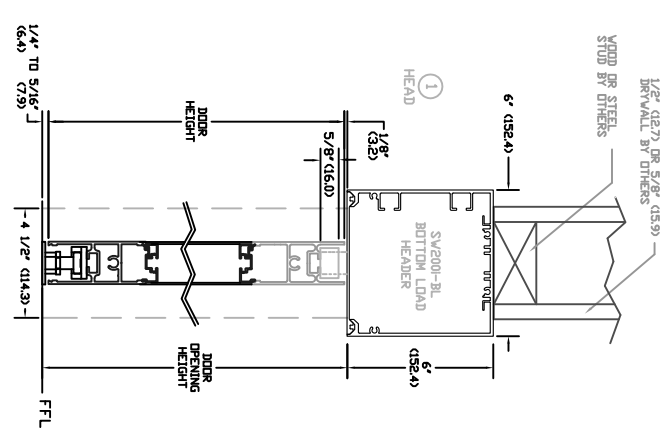
BESAM SW2001-BL WITH DOORS
 SINGLE/DUAL OHC
 BOTTOM LOAD HEADER



NOTE:
 PACKAGE INCLUDES AUTOMATIC OPERATOR, CONTROLLER, CONCEALED ARM, ALUMINUM DOOR PACKAGE AND SENSOR SYSTEM PER YOUR SELECTION, SEE I-ADAPT DRAWINGS 1010265 AND 1010266 FOR DETAILS ON SENSOR SYSTEM,
 * & ** CONSULT FACTORY
 * UNDER 74" (1880) & DYER 98" (2489)
 ** UNDER 37" (940) & DYER 49 (1245)
 NET CLEAR DOOR OPENINGS FOR 36" & 42" DOORS IN THE OPEN POSITION ARE 32-1/8" & 38-1/8" RESPECTIVELY (DR BY FORMULA) DOOR SIZE -3.87")
 NOTE: EGRESS CLEARANCES MAY BE COMPROMISED BY EXTRA DR ADDITIONAL SURFACE MOUNTED HARDWARE.
 STANDARD FINISH:
 CLEAR - AA-M1C22A41, CLASS 1, .018 MM,
 DARK BRONZE - AA-M1C22A44, CLASS 1, .018 MM.
 SPECIAL FINISHES ARE AVAILABLE
 NOTE: DRAWING IS DIMENSIONED IN BOTH ENGLISH AND METRIC. REF. AS FOLLOWS: 1" (25.4). ALL METRIC SIZES ARE IN MILLIMETERS.



NOTE: #
 GUIDE RAILS (SHOWN) ARE REQUIRED ON THE SUGGESTED STATE PERMITS FOR STRIKE DOORS (ANSI 156.10) BUT NOT ON ENERGY POWER OPERATED DOORS (ANSI 156.19).



SW2001 SERIES

DATE: 10/07/15	DESIGNED BY: JAW	DATE: 4/22/13	REV: 2.0	DATE: 3/29/16
THROW: SS	DATE: 4/22/13	CHKD BY: JAW	DATE: 4/22/13	REV: 2.0

ASSA ABLOY