

#### NOTES

1. BLOWER MUST BE WITHIN 100 FEET (30.5m) OF THE FAST® UNIT. FOR DISTANCES GREATER THAN 100 FEET--CONSULT FACTORY. BLOWER BASE MUST BE LOCATED ABOVE THE NORMAL FLOOD LEVEL.
2. THE FACTORY RECOMMENDS CONNECTING AT LEAST ONE LENGTH OF GALVANIZED PIPE TO THE DISCHARGE LINE OF THE BLOWER TO PREVENT HEAT FATIGUE DUE TO BLOWER FRICTION. DO NOT RUN GALVANIZED PIPE INTO THE FAST UNIT.
3. INSTALL A PIECE OF PVC PIPE FOR THE VERTICAL PORTION OF THE AIR LINE COMING OUT OF THE AIRLIFT, AND USE FLEXIBLE PIPE BETWEEN THAT PVC PIPE AND THE HARD PIPING COMING OUT OF THE BLOWER OUTLET.
4. BLOWER CONTROL SYSTEM, BY BIO-MICROBICS.
5. PLEASE SEE ADDITIONAL VIEWS DRAWING FOR DETAILED DRAWINGS OF THE BLOWER HOUSING AND THE BIO-FLOATS.
6. COPYRIGHT (C) 2001, BIO-MICROBICS, INC.

IN THE INTEREST OF TECHNOLOGICAL PROGRESS, ALL PRODUCTS ARE SUBJECT TO DESIGN AND/OR MATERIAL CHANGE WITHOUT NOTICE.

Date 6-20-01

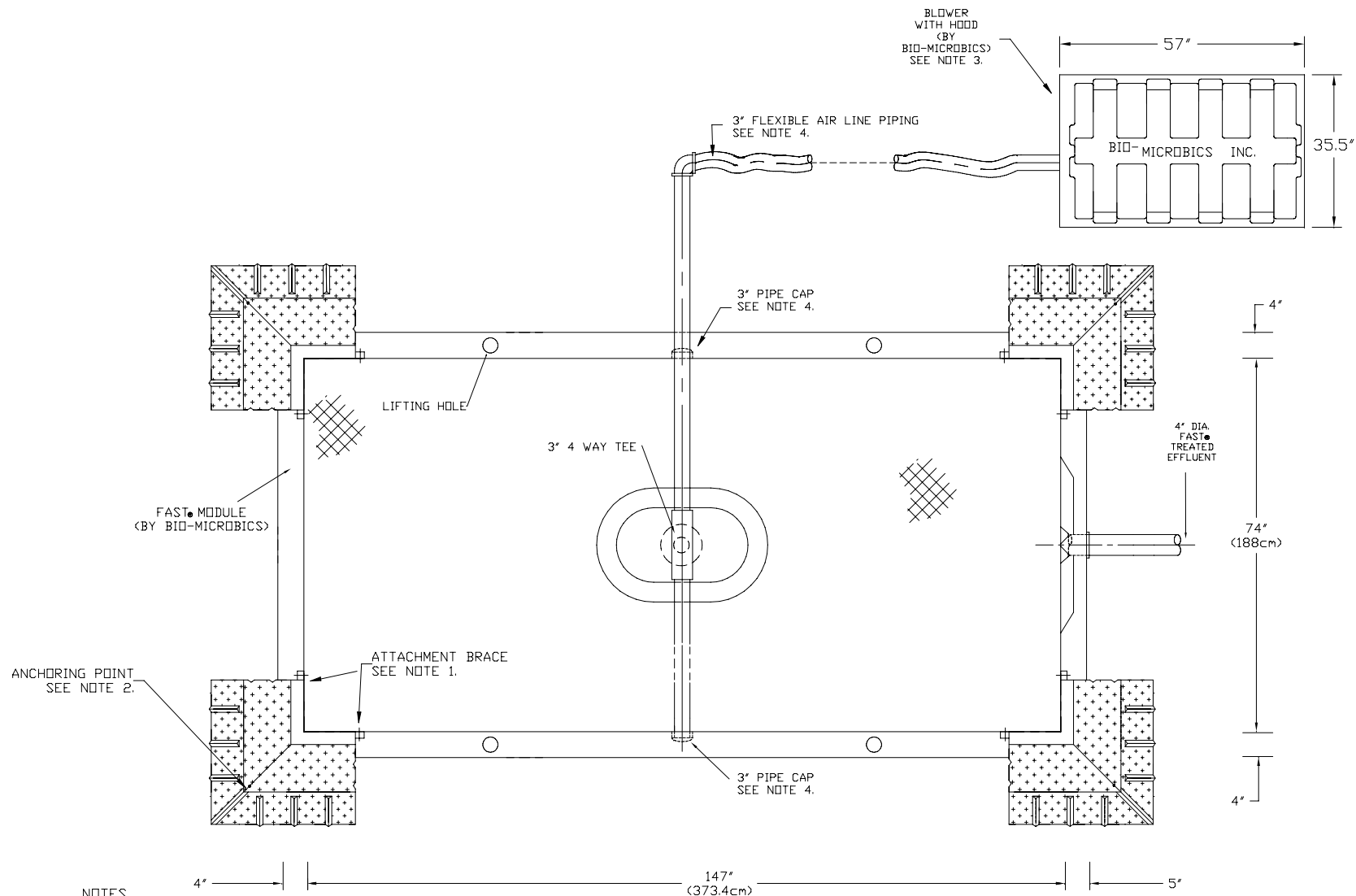
**BIO-MICROBICS**  
INCORPORATED

© Bio-Microbics, Inc. 2001

LagoonFAST®  
9.0

THE DESIGN AND DETAIL OF THIS DRAWING IS THE PROPERTY OF BIO-MICROBICS, INC. AND IS NOT TO BE USED EXCEPT IN CONNECTION WITH OUR WORK. DESIGN AND INVENTION RIGHTS ARE RESERVED. DIMENSIONS ARE IN INCHES UNLESS OTHERWISE NOTED.

Drawn by SMF



#### NOTES

1. TO ATTACH THE BIO-FLOAT TO THE FAST<sup>®</sup> MODULE, PLACE IT FLUSH AGAINST THE LIP OF THE LINER AND AGAINST THE LINER'S OUTER WALL. BOLT THE BIO-FLOAT TO THE LINER THROUGH THE ATTACHMENT BRACES ON EACH SIDE OF THE BIO-FLOAT. AT ANY POINT WHERE THE ATTACHMENT POINT IS BELOW THE LEVEL OF THE MEDIA, THEN SCREWS SHOULD BE USED INSTEAD OF BOLTS. THERE ARE ADDITIONAL ATTACHMENT POINTS LOCATED AT THE BOTTOM OF THE BIO-FLOAT NOT VISIBLE ON THIS DRAWING. PLEASE SEE ADDITIONAL VIEWS DRAWING TO SEE THE OTHER ATTACHMENT POINTS.

2. THIS THREADED INSERT IS TO BE USED AS AN ANCHORING POINT IN WHICH A STAINLESS STEEL EYE BOLT IS TO BE SCREWED INTO. THE STAINLESS STEEL EYE BOLT WILL BE PROVIDED. AN ANCHORING LINE IS TO BE ATTACHED TO THE EYE BOLT TO STABILIZE THE FAST UNIT. THE ANCHORING LINE WILL NOT BE PROVIDED.

3. BLOWER MUST BE WITHIN 100 FEET (30.5m) OF FAST UNIT. FOR DISTANCES GREATER THAN 100 FEET--CONSULT FACTORY. BLOWER BASE MUST BE ABOVE NORMAL FLOOD LEVELS.

4. PIPE CAPS WILL BE GLUED ON TO EACH END OF THE 3" PVC PIPE. A FLEXIBLE AIR LINE SHOULD BE USED BETWEEN THE BLOWER AND THE PVC AIRLINE COMING UP OUT OF THE CENTER OF THE AIRLIFT.

5. COPYRIGHT (C) 2001, BIO-MICROBICS, INC.

IN THE INTEREST OF TECHNOLOGICAL PROGRESS, ALL PRODUCTS ARE SUBJECT TO DESIGN AND/OR MATERIAL CHANGE WITHOUT NOTICE.

Date 6-20-01

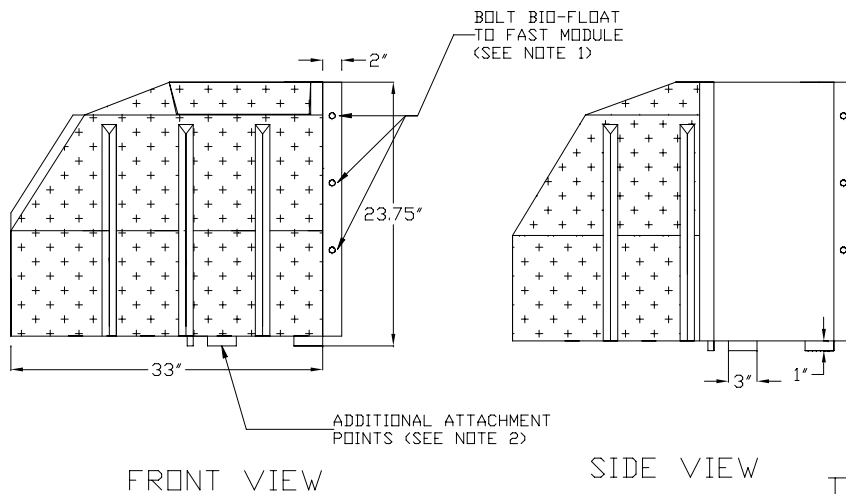
**BIO-MICROBICS**<sup>®</sup>  
INCORPORATED

© Bio-Microbics, Inc. 2001

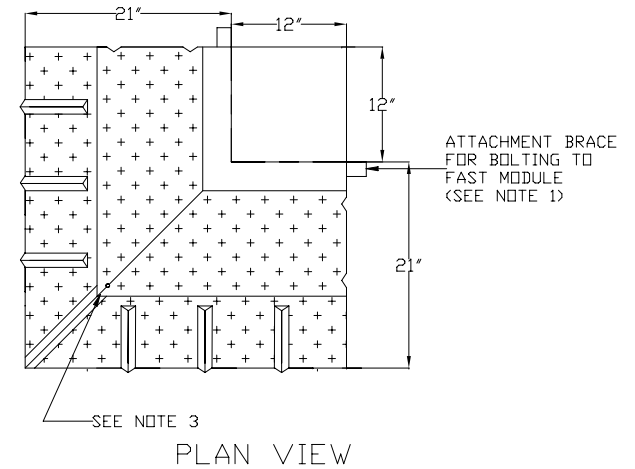
LagoonFAST<sup>®</sup> 9.0  
(Plan View)

THE DESIGN AND DETAIL OF THIS DRAWING IS THE PROPERTY OF BIO-MICROBICS, INC. AND IS NOT TO BE USED EXCEPT IN CONNECTION WITH OUR WORK. DESIGN AND INVENTION RIGHTS ARE RESERVED. DIMENSIONS ARE IN INCHES UNLESS OTHERWISE NOTED.

Drawn by SMF

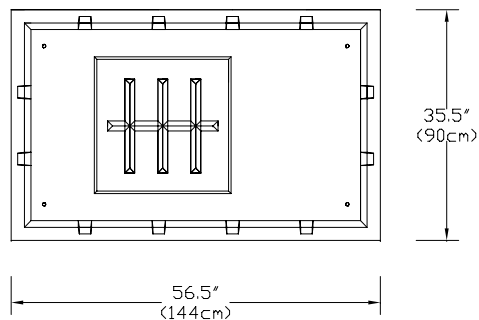
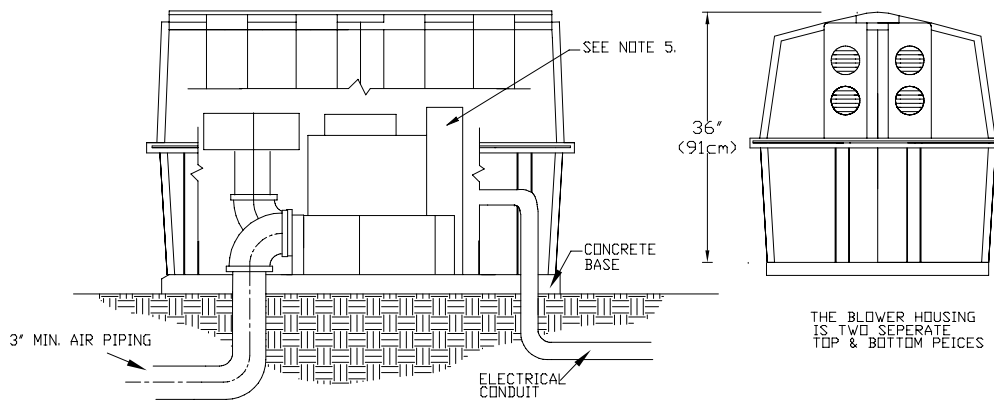


## BIO-FLOAT



### NOTES

1. SECURE BIO-FLOAT TO CORNER OF FAST MODULE BY ATTACHING THREE (3) BOLTS TO EACH OF THE TWO (2) ATTACHMENT BRACES LOCATED ON BOTH SIDES OF THE BIO-FLOAT. NOTE THAT ANY ATTACHMENT POINT LOCATED BELOW THE LINE OF THE MEDIA MUST BE SCREWED AND NOT BOLTED.
2. THERE ARE TWO (2) ADDITIONAL FLAPS LOCATED ON EACH SIDE OF THE BIO-FLOAT WHICH SHOULD BE ATTACHED TO THE LINER WITH SCREWS. NOTE THAT THESE WILL BE BELOW THE WATER LINE.
3. THREADED INSERT IS TO BE USED AS AN ANCHORING POINT.
4. BLOWER MUST BE LOCATED ABOVE THE FLOOD LEVEL.
5. AN OPTIONAL BLOWER WITH TWO DISCHARGE PIPES MAY BE PURCHASED. (1 BLOWER FOR 2 SYSTEMS) CONSULT THE FACTORY.



## BLOWER HOUSING DIMENSIONS

IN THE INTEREST OF TECHNOLOGICAL PROGRESS, ALL PRODUCTS ARE SUBJECT TO DESIGN AND/OR MATERIAL CHANGE WITHOUT NOTICE.

Date 6-20-01

**BIO-MICROBICS**  
INCORPORATED

© Bio-Microbics, Inc. 2001

LagoonFAST 9.0  
Additional Views

THE DESIGN AND DETAIL OF THIS DRAWING IS THE PROPERTY OF BIO-MICROBICS, INC. AND IS NOT TO BE USED EXCEPT IN CONNECTION WITH OUR WORK. DESIGN AND INVENTION RIGHTS ARE RESERVED. DIMENSIONS ARE IN INCHES UNLESS OTHERWISE NOTED.

Drawn by SMF