



Innovative Products

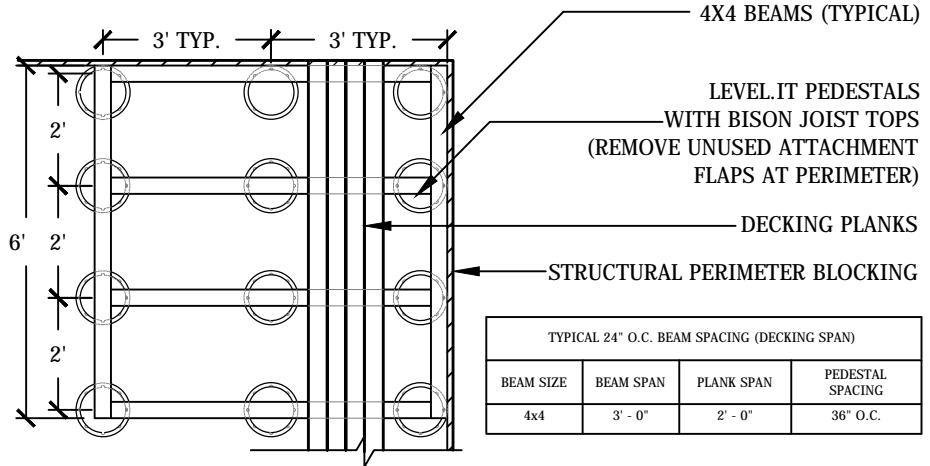
2395 West 4th Avenue Denver, CO 80223 USA
 Phone 303.892.0400 Toll Free 800.333.4234 Fax 303.825.5988
 EMail info@BisonIP.com Web www.BisonIP.com

LEVEL.IT
Adjustable Deck Supports

BISON JOIST TOP DETAILS WITH DECK PLANKING

GENERAL NOTES

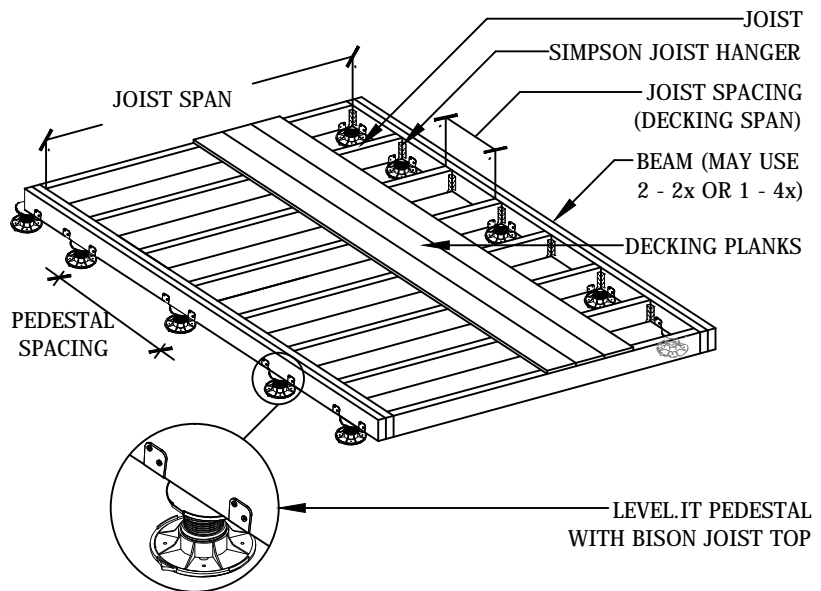
1. FIRST MECHANICALLY FASTEN JOIST TOP TO TOP OF PEDESTAL USING BISON PROVIDED SCREW.
2. WOOD JOISTS OR BEAMS ARE INSTALLED ON TOP OF THE PEDESTALS.
3. FOLD FLAPS AROUND JOIST OR BEAM AND MECHANICALLY FASTEN WITH WOOD SCREWS.



TWO WAY BEAM DETAIL- SAMPLE BISON PEDESTAL WITH IPE PLANK LAYOUT

TYPICAL 12" O.C. JOIST SPACING (DECKING SPAN)			
JOIST SIZE	JOIST SPAN	BEAM SIZE	PEDESTAL SPACING
2x6	10' - 0"	4x6 OR (2) 2x6	24" O.C.
2x8	13' - 2"	4x8 OR (2) 2x8	24" O.C.
2x10	16' - 10"	4X10 OR (2) 2x10	24" O.C.
TYPICAL 16" O.C. JOIST SPACING (DECKING SPAN)			
JOIST SIZE	JOIST SPAN	BEAM SIZE	PEDESTAL SPACING
2x6	9' - 1"	4x6 OR (2) 2x6	24" O.C.
2x8	12' - 0"	4x8 OR (2) 2x8	24" O.C.
2x10	15' - 2"	4X10 OR (2) 2x10	24" O.C.
TYPICAL 24" O.C. JOIST SPACING (DECKING SPAN)			
JOIST SIZE	JOIST SPAN	BEAM SIZE	PEDESTAL SPACING
2x6	7' - 11"	4x6 OR (2) 2x6	24" O.C.
2x8	10' - 2"	4x8 OR (2) 2x8	24" O.C.
2x10	12' - 5"	4X10 OR (2) 2x10	24" O.C.

*** CHARTS ARE SHOWN USING HEM-FIR #2 LUMBER OR BETTER.



JOIST AND PLANK LAYOUT

GENERAL NOTES: APPLY TO ALL OF THE ABOVE PRODUCTS

1. INSTALLATION MUST BE COMPLETED IN ACCORDANCE WITH BISON INNOVATIVE PRODUCTS SPECIFICATIONS.
2. DRAWINGS NOT TO SCALE.
3. CONTRACTOR'S NOTE: FOR PRODUCT AND COMPANY INFORMATION VISIT www.BisonIP.com

