

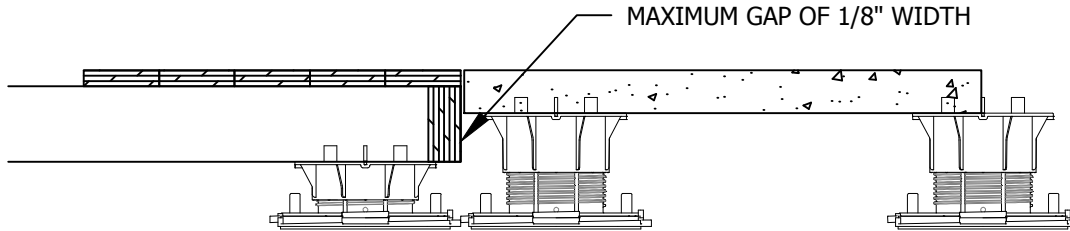


**BISON** Innovative Products

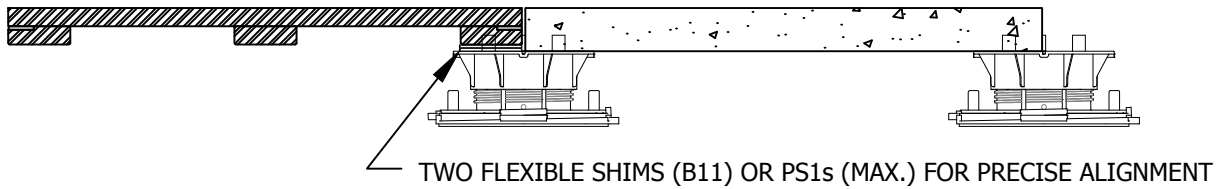
Get CEU Credits, Details, & Specifications online at [www.bisonip.com](http://www.bisonip.com)

701 Osage Street, Bldg 2, Unit 120 Denver, CO 80204 USA  
Phone 303.892.0400 Toll Free 800.333.4234 Fax 303.825.5988  
EMail [info@bisonip.com](mailto:info@bisonip.com) Web [www.bisonip.com](http://www.bisonip.com)

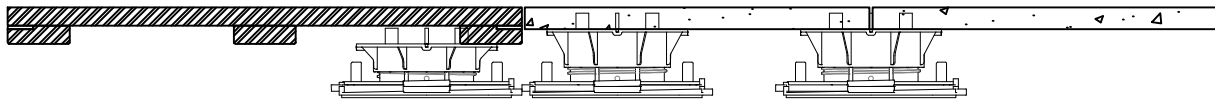
**WOOD TILES**  
with Versadjust Pedestals



### **JOIST AND PLANK WITH 2" CONCRETE PAVER**



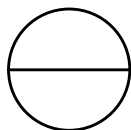
### **BISON WOOD PAVER WITH 2" CONCRETE PAVER**



### **BISON WOOD PAVER WITH 1" TILE**

**GENERAL NOTES:** APPLY TO ALL OF THE ABOVE PRODUCTS

1. INSTALLATION MUST BE COMPLETED IN ACCORDANCE WITH BISON INNOVATIVE PRODUCTS SPECIFICATIONS.
2. DRAWINGS NOT TO SCALE.
3. CONTRACTOR'S NOTE: FOR PRODUCT AND COMPANY INFORMATION VISIT [www.BisonIP.com](http://www.BisonIP.com)



## **WOOD TO PAVER TRANSITIONS**

DECKING MATERIAL CHANGE TRANSITIONS