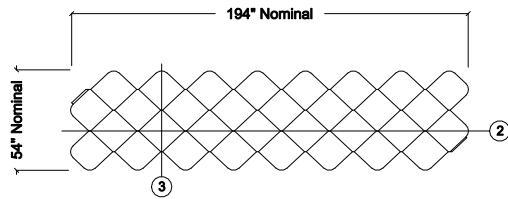
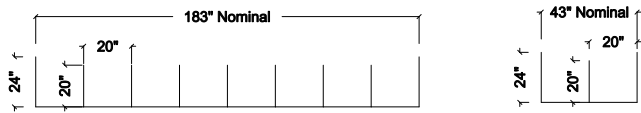


# TYPAR® GEOCELL DC2 PRODUCT SPECIFICATIONS:



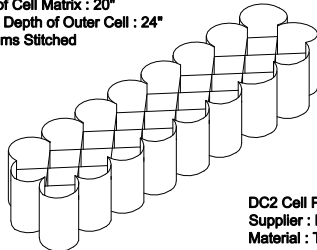
1 TYPAR® GEOCELL DC2 : Plan View  
Scale : N.T.S.



2 TYPAR® GEOCELL DC2 : Section Cut - Length  
Scale : N.T.S.

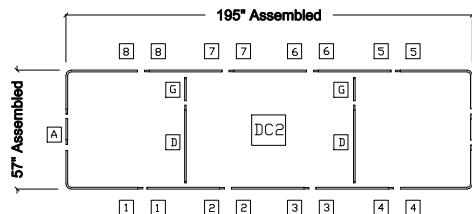
3 Section View - Width  
Scale : N.T.S.

Depth of Cell Matrix : 20"  
Overall Depth of Outer Cell : 24"  
All Seams Stitched



DC2 Cell Panel  
Supplier : Polymer Group Inc. Inc.  
Material : Typar 10 oz/yd<sup>2</sup>

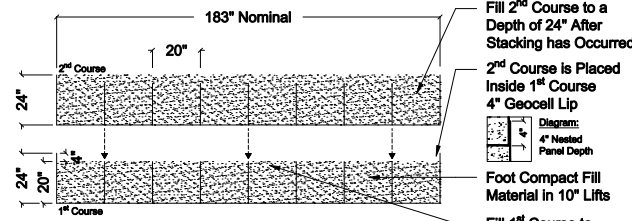
4 TYPAR® GEOCELL DC2 : Isometric View  
Scale : N.T.S.



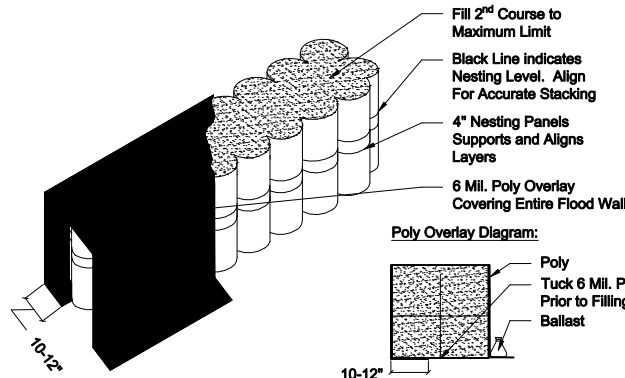
Snap-Fit Connections  
Standard Frame Sections  
To Be Removed For DC2  
Construction : [B] [C] [E] [F]

5 TYPAR® GEOCELL : Standard Construction Frame Diagram  
Scale : N.T.S.

# STANDARD FLOOD WALL DESIGN:



6 TYPAR® GEOCELL FLOOD WALL : Stacking Diagram  
Scale : N.T.S.



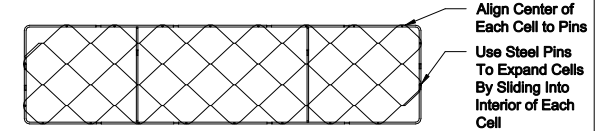
7 TYPAR® GEOCELL FLOOD WALL : Constructed Isometric View  
Scale : N.T.S.

Table 1 : DC2 Specifications

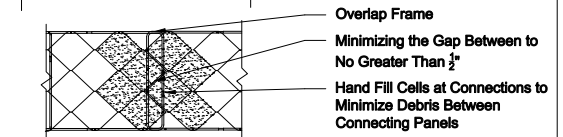
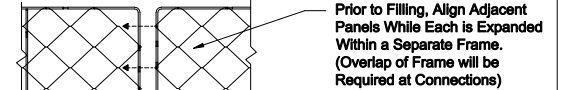
PHYSICAL PROPERTIES	UNITS	DC2
Panel Length	mm / in	4.9 / 194
Footprint Width	mm / in	1.35 / 54
Protected Width	mm / in	1.10 / 43
Panel Volume	y <sup>3</sup>	4.9
80% Compacted <sup>1</sup>	tons	6.4
Cells In Length	No.	8
Cell In Width	No.	2
Cell Diameter	m / in	0.5 / 20
Cell Depth	m / in	0.5 / 20
Color		Tan
Panel Weight	lbs	15
Panels per Pallet	No.	44
Pallet Gross Weight <sup>2</sup>	lbs	740

<sup>1</sup> Calculated 80% Compaction (Sand) - 20% shrinkage/wet/dry factor (US tons)  
<sup>2</sup> Gross Weight - Includes weight of pallet plus Frame Kit  
<sup>3</sup> Tested by ERDC, WBS, HP White, TRC, and CEC, Inc.

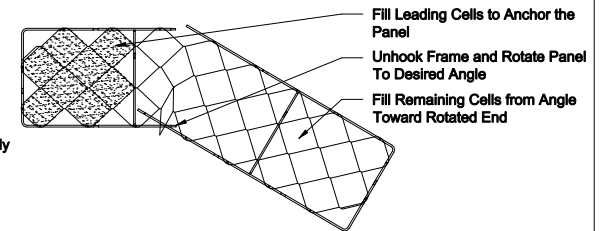
NOTES:  
Note 1:  
Note 2:



8 TYPAR® GEOCELL FLOOD WALL : Panel Expansion Using Standard Frame  
Scale : N.T.S.



6 TYPAR® GEOCELL FLOOD WALL : End Connection & 90° Angle Diagram  
Scale : N.T.S.



8 TYPAR® GEOCELL FLOOD WALL : 1° - 60° Angle Diagram  
Scale : N.T.S.

**TYPAR Geosynthetics**  
70 Old Hickory Blvd. Old Hickory, TN 37138

Toll-Free: 1-800-541-5519  
e.mail: geocell@pgrm.com  
web site: www.typargeosynthetics.com

**NOT FOR CONSTRUCTION**

Copyright © Polymer Group Inc. All rights reserved.  
Typar is a registered trademark of Polymer Group Inc.

DISCLAIMER:  
THE INFORMATION CONTAINED IN THIS DETAIL IS PROVIDED FOR THE CONVENIENCE OF THE USER AND DOES NOT TAKE PLACE OF CONSTRUCTION PLANS AND/OR SPECIFICATIONS. POLYMER GROUP, INC. CANNOT BE HELD RESPONSIBLE FOR THE USE OR MISUSE OF THIS INFORMATION. WE RECOMMEND YOU CONTACT US FOR FURTHER DESIGN ASSISTANCE.  
THIS DETAIL IS FOR CONCEPT PURPOSES ONLY AND DOES NOT IMPLY ANY ACTUAL DESIGN OR ENGINEERING HAS BEEN COMPLETED. ENGINEERING MODELING WILL NEED TO BE PERFORMED TO DETERMINE PROPER HYDROLOGICAL AND STRUCTURAL REQUIREMENTS AND COMPONENTS INCLUDING SAND AND AGGREGATE. ALL MATERIALS ARE SUBJECT TO APPROVAL BY POLYMER GROUP, INC.

**Typar Geocell Flood Wall**  
*For Rapid Flood Protection*  
Specification, Design & Installation Guide