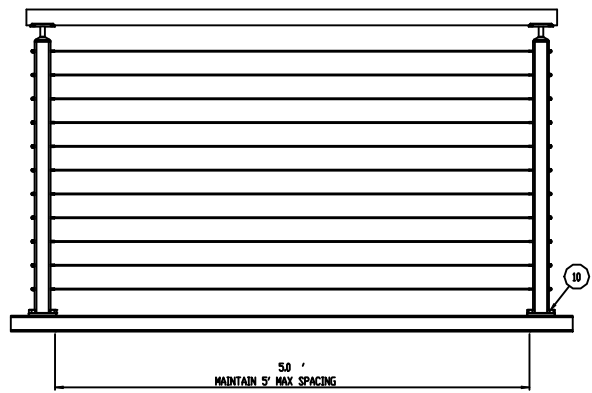
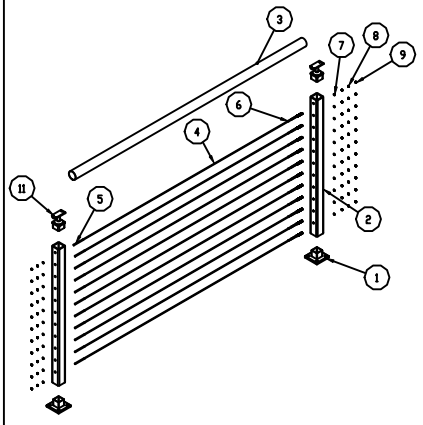
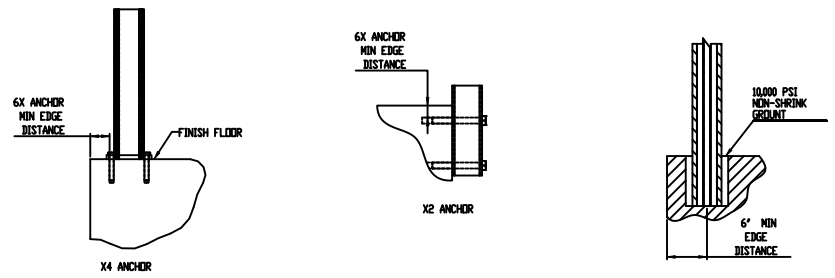
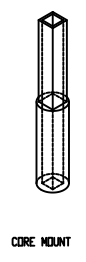
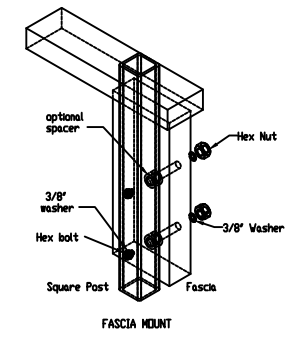
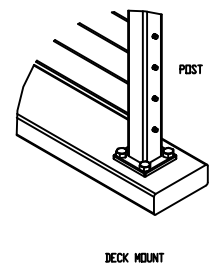


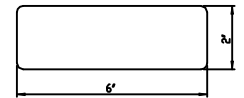
ITEM NO.	PART NUMBER	DESCRIPTION	QTY.
1	04-140-01	STAINLESS STEEL 2" WALL / FLOOR FLANGE / 4 HOLE	2
2	06-001-01x25.75-02	TERMINAL POST (STAINLESS STEEL)	2
3	05-300-01	ROUND TOP RAIL (STAINLESS STEEL)	1
4	Stainless Cable	1/8" or 3/16" DIA.	11
5	01-0085-01 DR 01-0285-01	FIELD THREADED TERMINAL	11
6	01-0008-01 DR 01-0228-01	FIELD THREADED TENSIDER	11
7	Stainless Washer	STD	22
8	Stainless Hex Nut	STD	22
9	Stainless Acorn Nut	STD	22
10	LAG BOLT	STD	8
11	06-215-01-001-ASB	STAINLESS 2" POST CAP FIXED RADIUS SADDLE	2



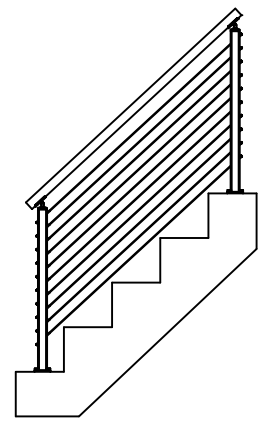
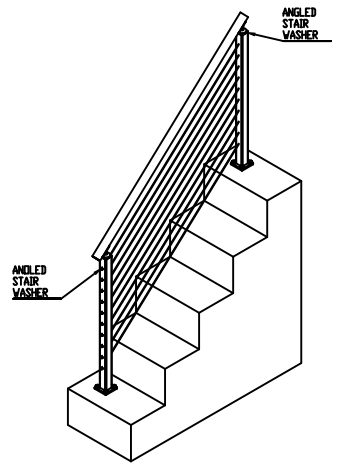
LEVEL 36" STANDARD GUARD RAILING



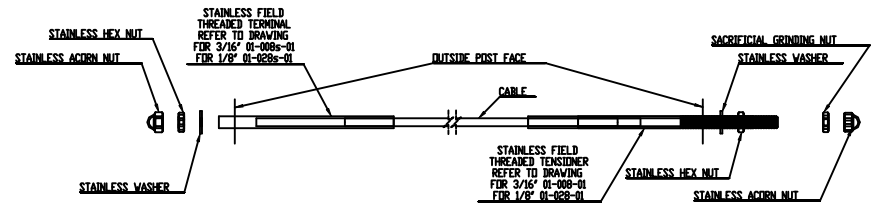
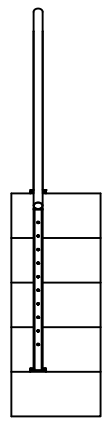
TYPICAL MOUNTING OPTIONS



TOP RAIL OPTIONS



STAIRS 36" STANDARD GUARD RAILING



- CUT EXCESS THREAD.
- REMOVE SACRIFICIAL NUT.
- SCREW ON ACORN NUT.

CABLE ATTACHMENT DETAIL

REV	DATE	DESCRIPTION OF CHANGE	EDH	BY	APPR
REVISIONS					
		Stainless Cable & Railing	TOLERANCES UNLESS OTHERWISE SPECIFIED DIM. ± .015 ANGULAR ± 1/2° FUNCTIONAL ± 1/32		
			THIS DRAWING IS THE PROPERTY OF STAINLESS CABLE & RAILING AND IS INTENDED TO BE USED IN CONFORMANCE WITH THE AMERICAN NATIONAL STANDARD FOR STAINLESS STEEL RAILING. IT MAY BE REPRODUCED OR TRANSMITTED IN ANY FORM OR BY ANY MEANS WITHOUT PERMISSION FROM SCAR.		
DRAWN BY: PA		DATE:	PROJECT:	TITLE: CABLEVIEW © STAINLESS SQUARE 36" RAILING	DVG NO. CV-SSQ 36
				SHEET 1 OF 1	