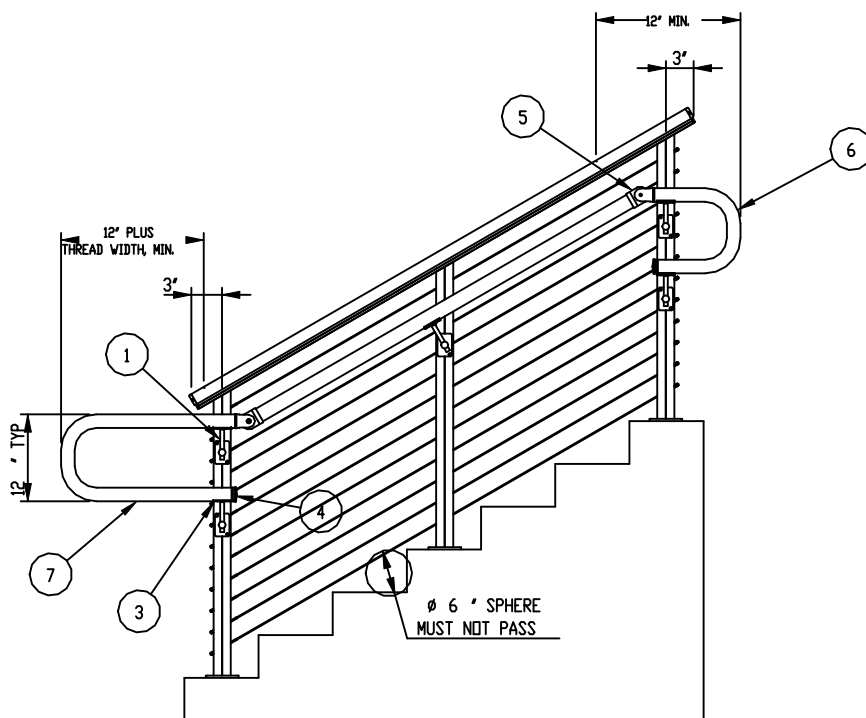
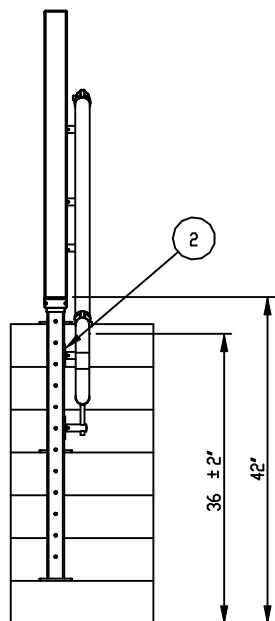



ITEM NO.	PART NUMBER	DESCRIPTION	QTY.
1	04 170 01	SS HANDRAIL BRACKET BASE	5
2	04 180 01	SS POST CONNECTOR FLAT	5
3	04 220 01	SS HANDRAIL CONNECTOR SADDLE RADIUS	5
4	05-130-01	SS 2" END CAP	2
5	05-280-00	SS 2" ADJUSTABLE ELBOW	2
6	05-305-12	SS 2" END LOOP/12"	1
7	05-305-24	SS 2" END LOOP/24"	1



- NOTES :** UNLESS OTHERWISE SPECIFIED
- DIMENSIONS ARE IN MM .
  - MACHINED SURFACES TO BE 63µIN MAX.
  - DO NOT SCALE DRAWING.
  - PART TO BE FREE OF BURRS AND SHARP EDGES.
  - ALL MATERIAL TO BE CLEAN, DEGREASED AND FREE OF ALL IMPURITIES.
  - ANY CHANGE MUST BE AUTHORIZED BY AN SC&R ENGINEER.

MATERIAL TYPE : 316 SS

VENDOR ID:

REV	DATE	DESCRIPTION OF CHANGE	ECN	BY.	APPR
REVISIONS					
 <b>Stainless Cable &amp; Railing</b>		<b>TOLERANCES</b> XX ±.01 UNLESS XXX ±.005 OTHERWISE ANGULAR ±0.5° SPECIFIED FRACTIONAL ±1/32	THIS DRAWING IS THE PROPERTY OF STAINLESS CABLE & RAILING AND IS PROTECTED UNDER COPYRIGHT LAW AS AN UNPUBLISHED WORK. IT MAY NOT BE PUBLISHED, COPIED OR REPRODUCED WITHOUT EXPRESS WRITTEN PERMISSION FROM SC&R		
DRAWN BY:		DATE	PROJECT	<b>TITLE :</b> STAINLESS STEEL HANDRAIL OPTION	
VENDOR ID:				<b>DRG NO.</b> SSSH0	
				<b>SHEET</b> 1 OF 1	