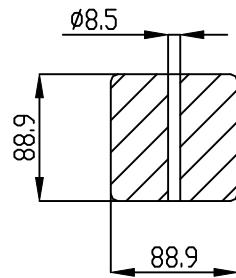
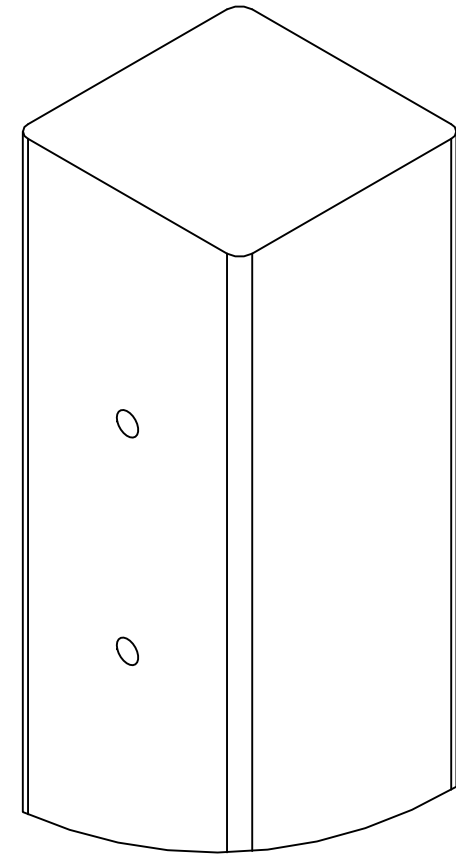


DETAIL C
SCALE 1 : 5




SECTION D-D
SCALE 1 : 5



- NOTES : UNLESS OTHERWISE SPECIFIED
1. DIMENSIONS ARE IN INCHES (MM).
 2. ARCHITECTURAL WOODWORK STANDARDS GRADE RULES FOR HONDURAS MAHOGANY PREMIUM GRADE
 3. ANY CHANGE MUST BE AUTHORIZED BY AN SC&R ENGINEER.

MATERIAL TYPE : Brazilian walnut

VENDOR ID:

REV	DATE	DESCRIPTION OF CHANGE	ECN	BY.	APPR
REVISIONS					
 Stainless Cable & Railing		TOLERANCES XX ±.01 UNLESS XXX ±.005 OTHERWISE ANGULAR ±0.5° SPECIFIED FRACTIONAL ±1/32	THIS DRAWING IS THE PROPERTY OF STAINLESS CABLE & RAILING AND IS PROTECTED UNDER COPYRIGHT LAW AS AN UNPUBLISHED WORK. IT MAY NOT BE PUBLISHED, COPIED OR REPRODUCED WITHOUT EXPRESS WRITTEN PERMISSION FROM SC&R		
DRAWN BY:		DATE	PROJECT	TITLE : Ipe Terminal Wood Post DRG NO. 07-001-01	
				SHEET 1 OF 1	