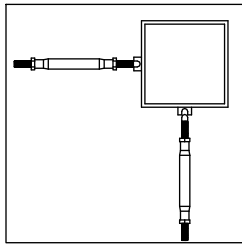
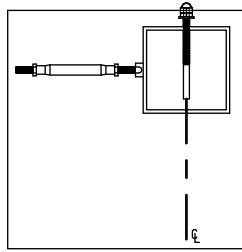


SINGLE POST



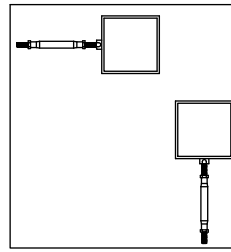
BOTH FITTING ATTACHED TO FACE

SINGLE POST



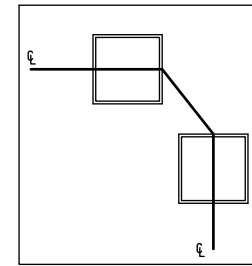
ONE FITTING ATTACHES THROUGH POST AND OTHER ATTACHES TO FACE

DOUBLE POST



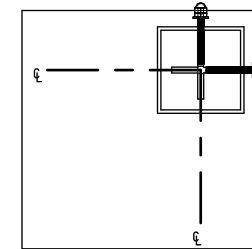
BOTH FITTINGS ATTACH TO FACE

DOUBLE POST



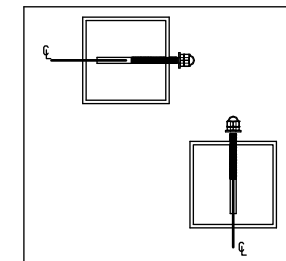
CABLE RUNS CONTINUOUSLY THROUGH THE CORNER

SINGLE POST

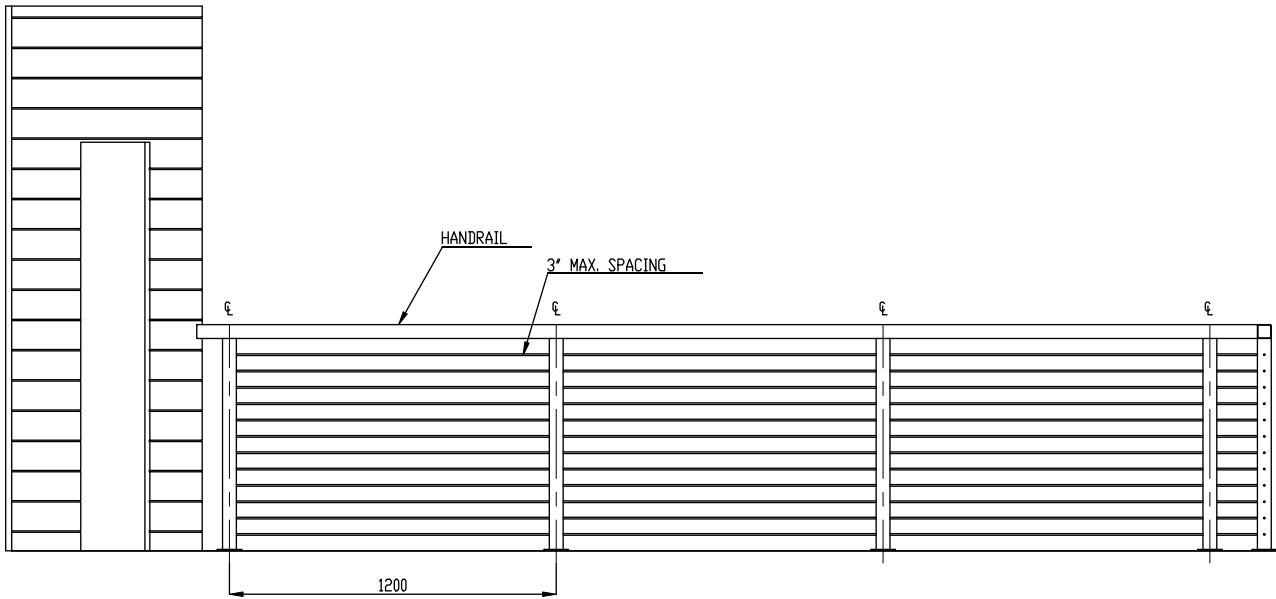


BOTH FITTINGS ATTACHED THROUGH POST. MUST OFFSET DRILL HOLES BY AT LEAST 1/2"

SINGLE POST



BOTH FITTINGS ATTACHED THROUGH POST.



MAINTAIN 5'-0" MAX. SPACING BETWEEN POSTS TO MINIMIZE CABLE DEFLECTION

NOTE: BUILDING CODES VARY BY CITY & COUNTRY. FOLLOWING THE INSTALLATION AND RAILING DESIGN INSTRUCTION AS DETAILED IN THIS DRAWING DOES NOT GUARANTEE CODE COMPLIANCE IN ALL AREAS, BEFORE STARING THE PROJECT, CHECK WITH LOCAL REQUIREMENT FOR USING AND INSTALLING CABLE RAILINGS.

REV	DATE	DESCRIPTION OF CHANGE	ECN	BY.	APPR
REVISIONS					
		<b>TOLERANCES</b> .XX ± .01 UNLESS OTHERWISE SPECIFIED .XXX ± .005 ANGULAR ± 0.5° FRACTIONAL ± 1/32	THIS DRAWING IS THE PROPERTY OF STAINLESS CABLE & RAILING AND IS PROTECTED UNDER COPYRIGHT LAW AS AN UNPUBLISHED WORK. IT MAY NOT BE PUBLISHED, COPIED OR REPRODUCED WITHOUT EXPRESS WRITTEN PERMISSION FROM SC&R		
DRAWN BY:		DATE:	TITLE : DESIGN RECOMMENDATION: STAINLESS STEEL SQUARE TUBE WITH CABLE INFILL DECK MOUNTED.		SHEET 1 OF 1
PROJECT:		**	DRG NO.		SHEET 1 OF 1