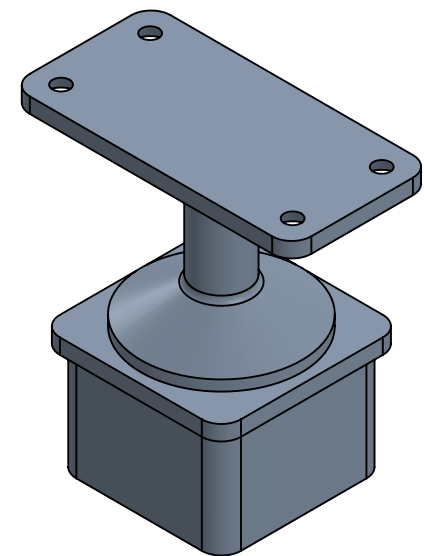
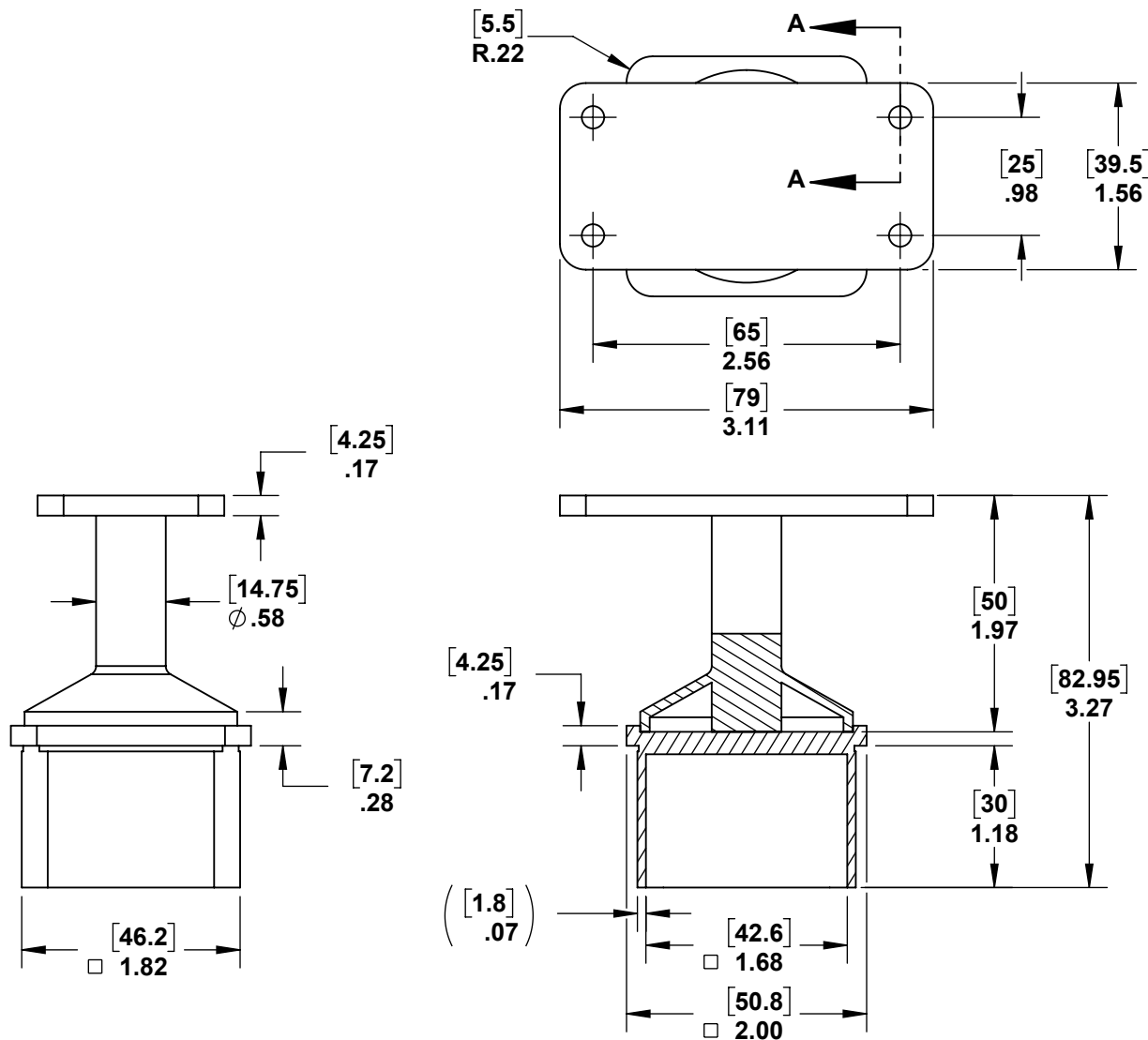


2

1



B

B

A

A



PROPRIETARY AND CONFIDENTIAL

THE INFORMATION CONTAINED IN THIS DRAWING IS THE SOLE PROPERTY OF STAINLESS CABLE AND RAILING®. ANY REPRODUCTION IN PART OR AS A WHOLE WITHOUT THE WRITTEN PERMISSION OF STAINLESS CABLE AND RAILING® IS PROHIBITED.

NOTES: UNLESS OTHERWISE SPECIFIED		NAME	DATE	TITLE:			
1. DIMENSIONS SHOWN - INCHES [MM]. 2. MACHINED SURFACES TO BE 63uIN MAX. 3. PART TO BE FREE OF BURRS AND SHARP EDGES. 4. ALL MATERIAL TO BE CLEAN, DEGREASED AND FREE OF ALL IMPURITIES. 5. ANY CHANGE MUST BE AUTHORIZED BY AN SC&R ENGINEER.	DIMENSIONS ARE IN INCHES FRACTIONAL $\pm$ ANGULAR: MACH $\pm$ TWO PLACE DECIMAL $\pm$ THREE PLACE DECIMAL $\pm$	DRAWN	SCR	03/27/18	<b>STAINLESS SQUARE FIXED FLAT INTERMEDIATE POST CAP</b>		
	MATERIAL	ENG APPR.					
	FINISH	MFG APPR.					
		COMMENTS:			SIZE <b>A</b>	DWG. NO. <b>731335</b>	REV <b>01</b>
					SCALE: 2:3	WEIGHT:	SHEET 1 OF 1

2

1