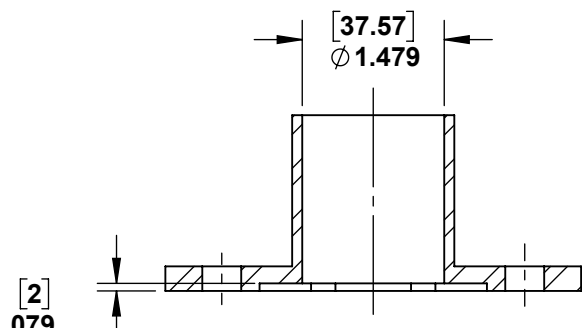
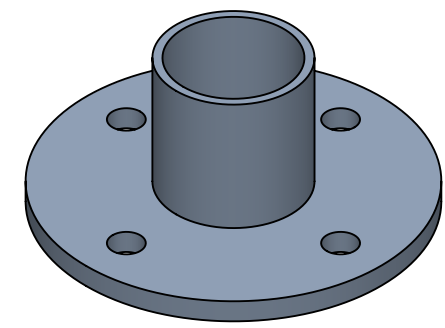
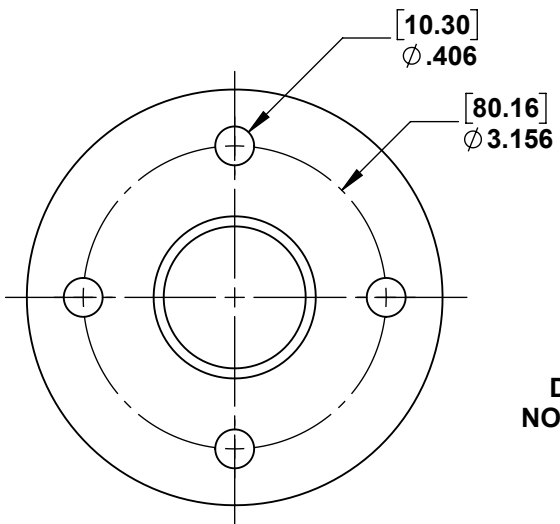


2

1

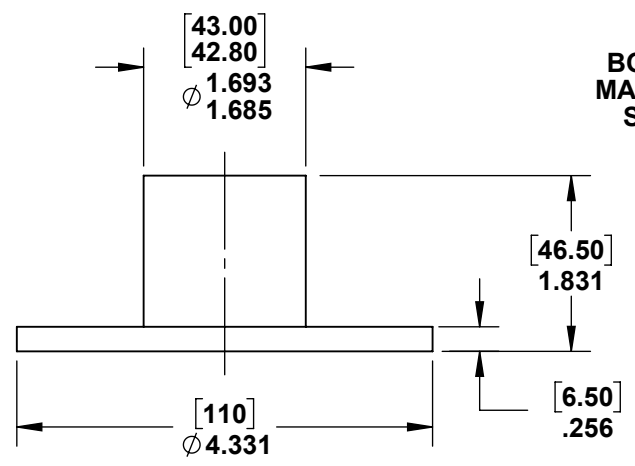
B

B

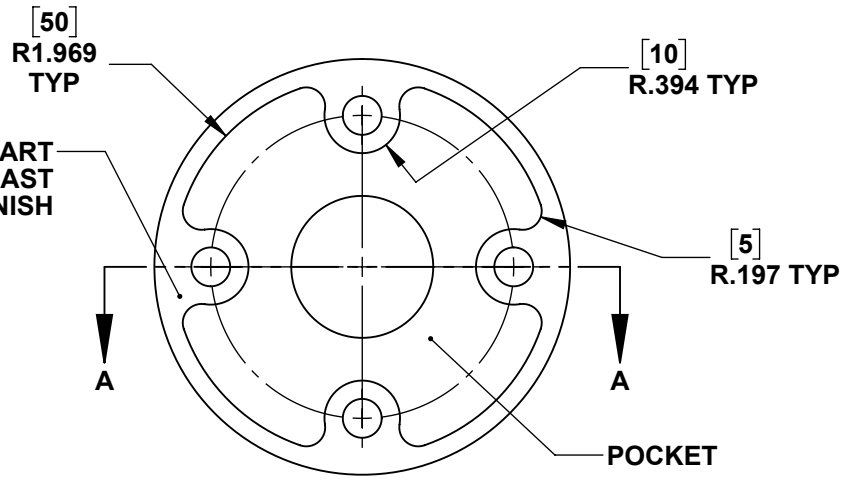


**DEPTH OF POCKET AS NOTED IN BOTTOM VIEW**

**SECTION A-A**



**BOTTOM OF PART MAY REMAIN CAST SURFACE FINISH**



A

A



**PROPRIETARY AND CONFIDENTIAL**

THE INFORMATION CONTAINED IN THIS DRAWING IS THE SOLE PROPERTY OF STAINLESS CABLE AND RAILING®. ANY REPRODUCTION IN PART OR AS A WHOLE WITHOUT THE WRITTEN PERMISSION OF STAINLESS CABLE AND RAILING® IS PROHIBITED.

NOTES: UNLESS OTHERWISE SPECIFIED		NAME	DATE	TITLE:		
1. DIMENSIONS SHOWN - INCHES [MM]. 2. MACHINED SURFACES TO BE 63µIN MAX. 3. PART TO BE FREE OF BURRS AND SHARP EDGES. 4. ALL MATERIAL TO BE CLEAN, DEGREASED AND FREE OF ALL IMPURITIES. 5. ANY CHANGE MUST BE AUTHORIZED BY AN SC&R ENGINEER.	DIMENSIONS ARE IN INCHES	DRAWN	SCR	<b>LONG NECK FLOOR FLANGE FOR TERMINAL POSTS</b>		
	FRACTIONAL ±	ENG APPR.				
	ANGULAR: MACH ±	MFG APPR.				02/28/18
	TWO PLACE DECIMAL ±	COMMENTS:				
	THREE PLACE DECIMAL ±					
MATERIAL	316 SS			SIZE	DWG. NO.	REV
FINISH				<b>A</b>	<b>733094</b>	<b>01</b>
DO NOT SCALE DRAWING				SCALE: 1:2	WEIGHT:	SHEET 1 OF 1

2

1