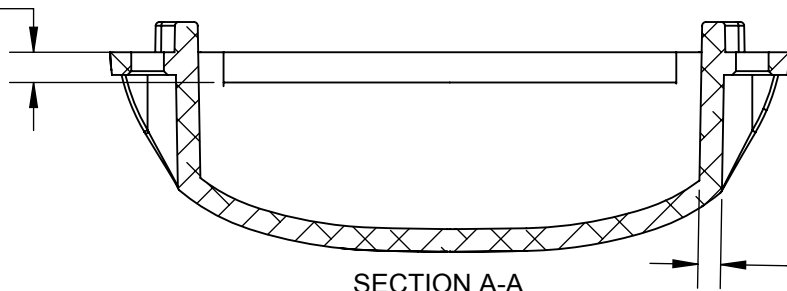


2

1

[4]
.16



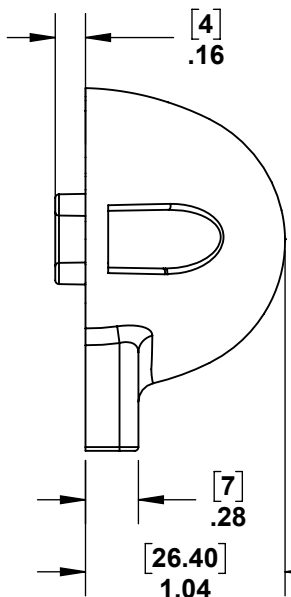
SECTION A-A
SCALE 1 : 1

[3]
.12

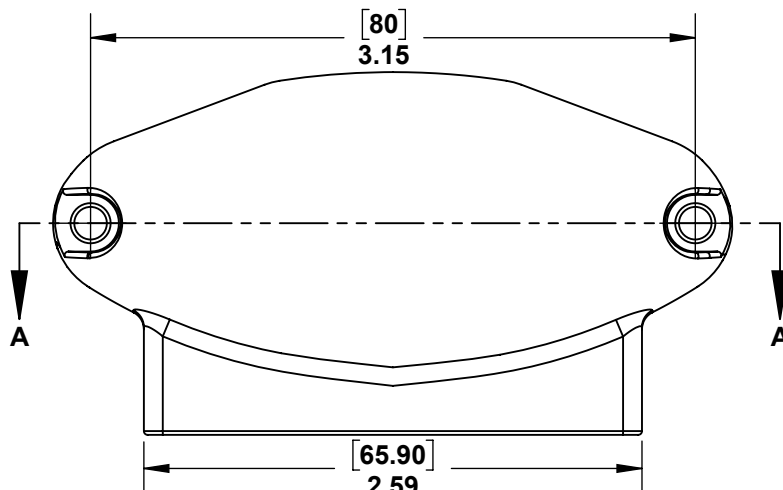
B

B

[4]
.16



[80]
3.15



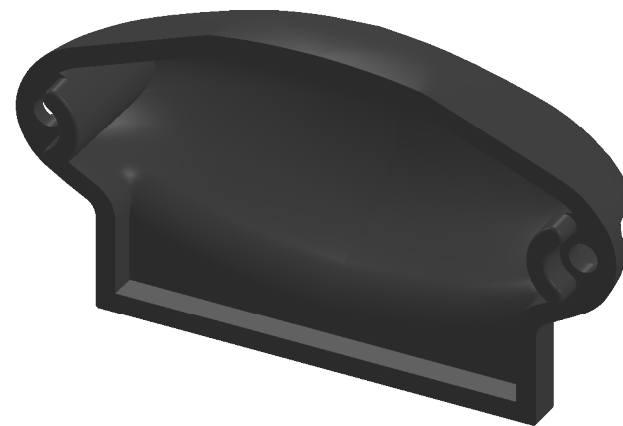
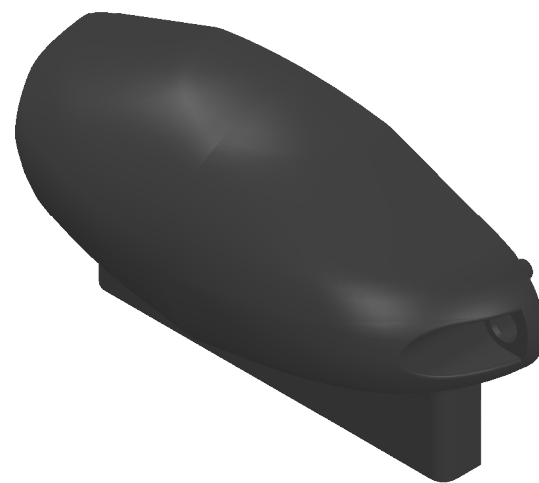
A

A

[65.90]
2.59

[7]
.28

[26.40]
1.04



A

A



PROPRIETARY AND CONFIDENTIAL

THE INFORMATION CONTAINED IN THIS DRAWING IS THE SOLE PROPERTY OF STAINLESS CABLE AND RAILING®. ANY REPRODUCTION IN PART OR AS A WHOLE WITHOUT THE WRITTEN PERMISSION OF STAINLESS CABLE AND RAILING® IS PROHIBITED.

NOTES: UNLESS OTHERWISE SPECIFIED

1. DIMENSIONS SHOWN - INCHES [MM].
2. MACHINED SURFACES TO BE 63uIN MAX.
3. PART TO BE FREE OF BURRS AND SHARP EDGES.
4. ALL MATERIAL TO BE CLEAN, DEGREASED AND FREE OF ALL IMPURITIES.
5. ANY CHANGE MUST BE AUTHORIZED BY AN SC&R ENGINEER.

DIMENSIONS ARE IN INCHES
 FRACTIONAL ±
 ANGULAR: MACH ±
 TWO PLACE DECIMAL ±
 THREE PLACE DECIMAL ±

MATERIAL
6061 T6 ALUM

FINISH
POWDERCOAT

DO NOT SCALE DRAWING

NAME	DATE
SCR	10/23/17

DRAWN	
ENG APPR.	
MFG APPR.	

COMMENTS:

TITLE:

**ELLIPTICAL RAIL
END CAP**

SIZE A	DWG. NO. 983403	REV 01
------------------	---------------------------	------------------

SCALE: 2:3	WEIGHT:	SHEET 1 OF 1
------------	---------	--------------

2

1