

Product Code 12395TBLIP

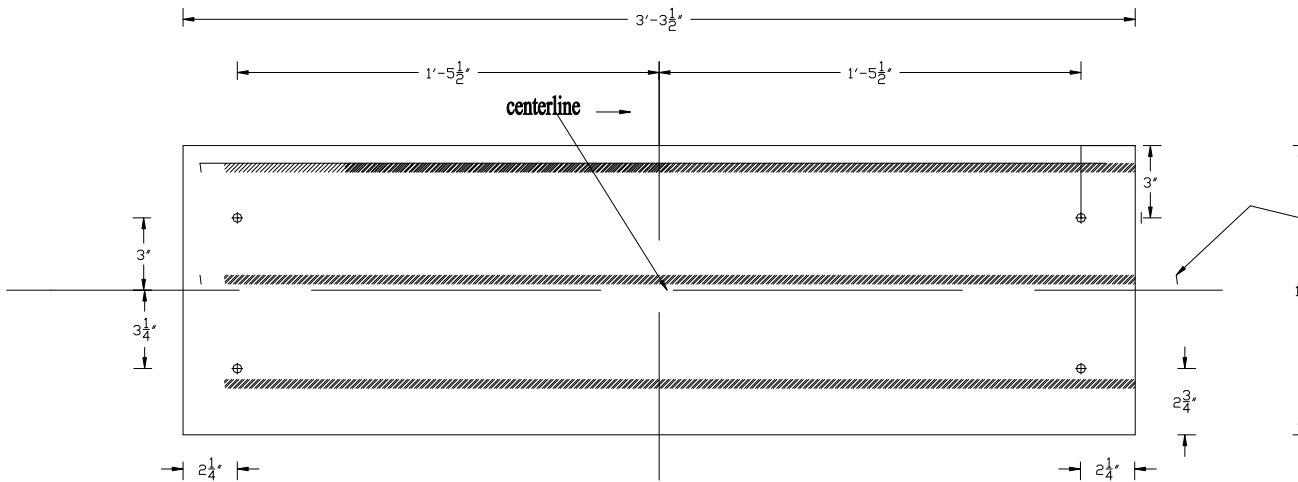
12"x39.5"x 2 1-4" Step Tread Broom Finish w/ lip w/ 3/8" Bolts

Camp Logan Cement Works Inc.

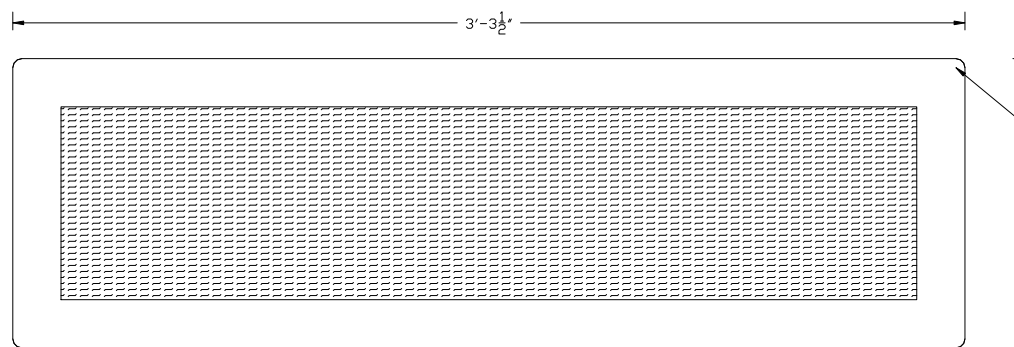
www.camplogancement.com

800-445-9062

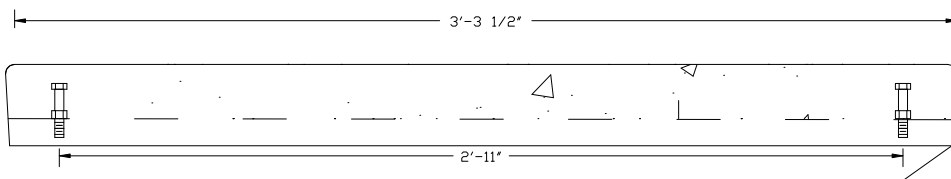
clcw@camplogancement.com



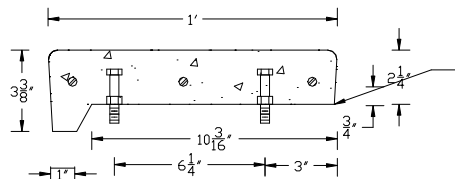
3 PIECES OF #3 REBAR
EMBEDDED 3/4" IN TREAD



BRUSH FINISH W/ 2"
EDGING ON SIDES
AND 3/8" RADIUS



3/8" BOLTS ENCASED IN
CONCRETE W/ SUPPORT
NUT



PRECAST CONCRETE TREAD
SUPPLIED BY CAMP LOGAN
CEMENT
800-445-9062