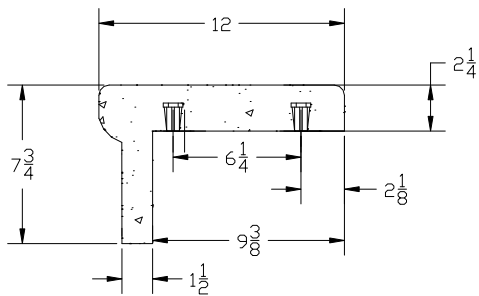
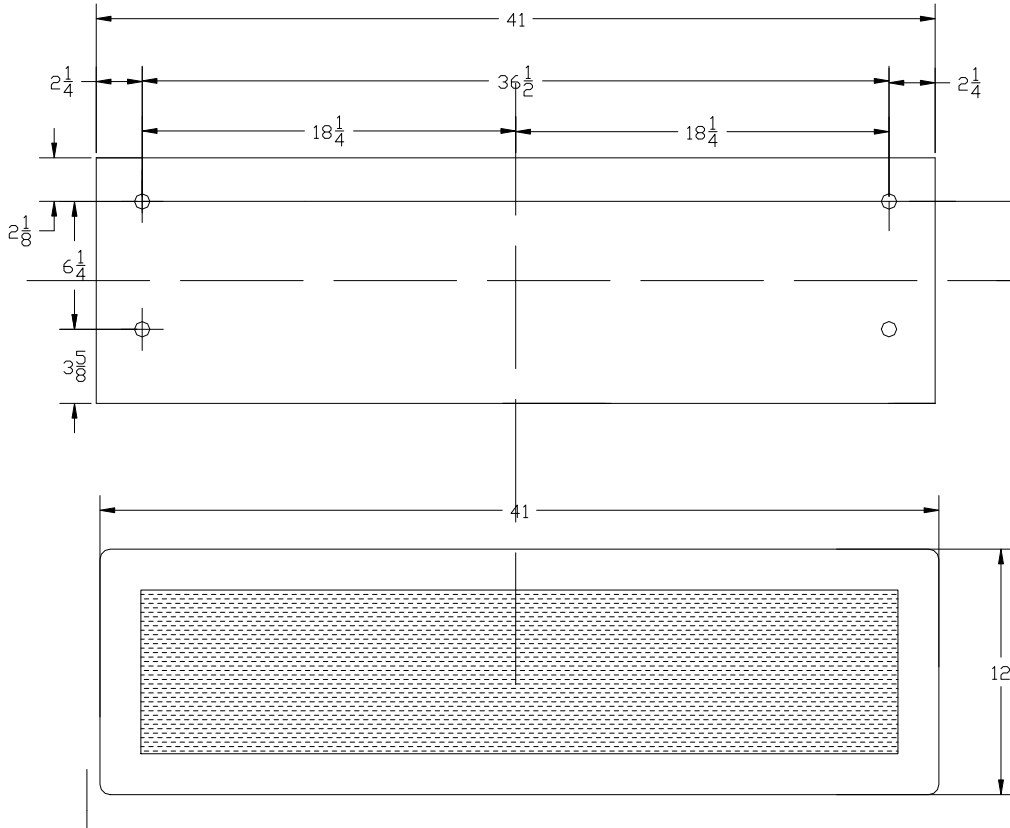
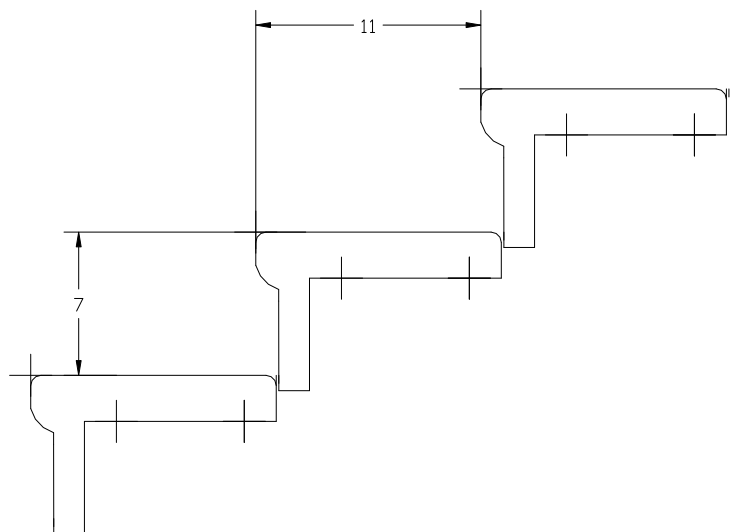


PRODUCT CODE 1241CLRS
 12"x41"x 2 1-4" Step Tread Concrete Closed Riser Broom Finish w/
 Inserts
 Camp Logan Cement Works Inc.
 www.camplogacement.com
 800-445-9062
 clcw@camplogacement.com



LIGHT BRUSH FINISH
 2 " WARNING STRIP
 CONTRASTING COLOR STRIPE
 (OPTIONAL)



CAMP LOGAN CEMENT	
SIZE: 41"	
WEIGHT: 138 LBS	
CONTRASTING COLOR STRIP: NONE	
FASTNER TYPE: 3/8" INSERT	
COLOR: GREY	