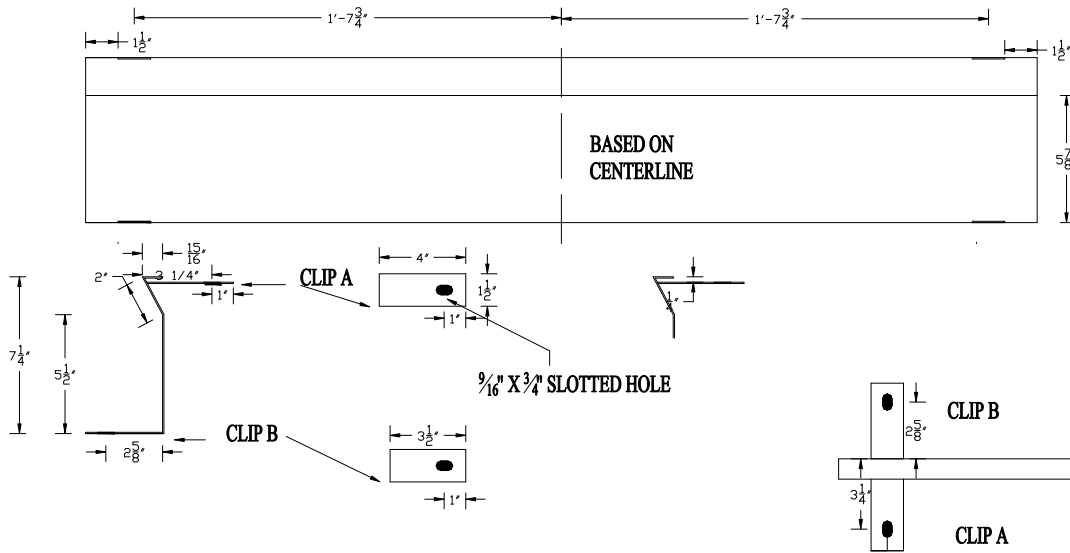


**Product Code 44CL-STEEL**  
**44" 16 GAUGE STEEL CLOSED RISER POWDER COATED BLACK**  
 Camp Logan Cement Works Inc.  
[www.camplogancement.com](http://www.camplogancement.com)  
 800-445-9062  
[clcw@camplogancement.com](mailto:clcw@camplogancement.com)

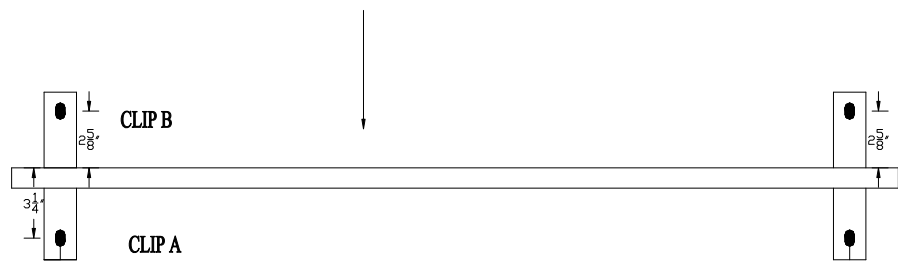
**CLOSED RISER**

Camp Logan's closed risers are subjected to a through cleaning and zinc-phosphate pretreatment. And they undergo an extensive and proven multi-step powder coating process, including a polyester powder coating, to provide a beautiful scratch and scuff resistant, anti-rust free surface.

- Eliminate hassle of transporting parts
- Environmental accountability
- Help save and managing cost of operations
- Quality finish: Multi stage pretreatment zinc primed and glossy polyester powder coat.
- Standard color black
- High quality 16 gauge steel



TOP VIEW



**BENDABLE TABS**  
**ALLOWS FOR ADJUSTABLE RISE 7"-6 1/2"**

