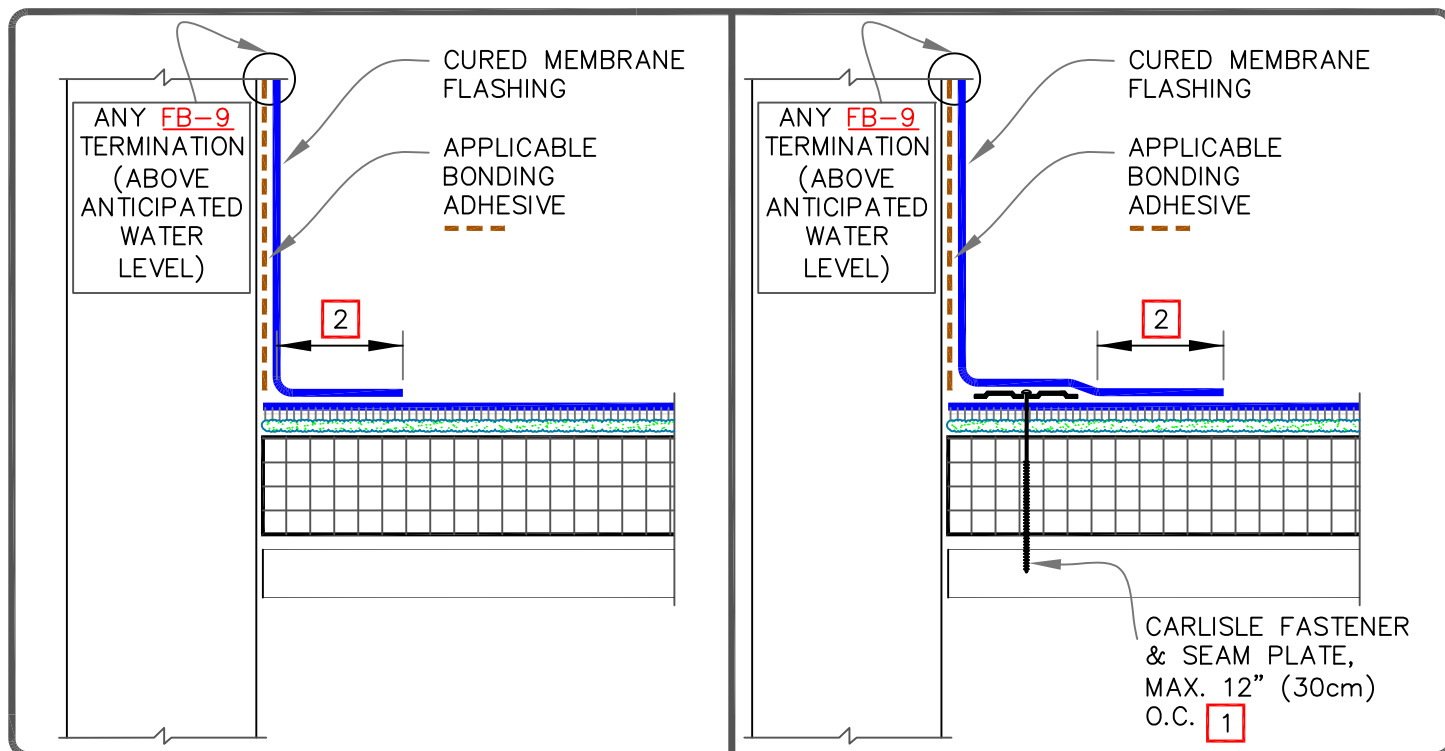


CAUTION

REFER TO [DETAIL FB-12C](#) WHEN USING AQUA BASE 120 ADHESIVE OR HYDROBOND.

NOTES:

1. MECHANICALLY FASTENED BASE SECUREMENT IS REQUIRED WHEN ANY ONE OF THE FOLLOWING MAY OCCUR:
 - 1.1. SPECIFIED WARRANTIES GREATER THAN 20-YEARS.
 - 1.2. WARRANTY WIND SPEEDS GREATER THAN 90MPH.
 - 1.3. PROJECTS WITH CONTROL OR EXPANSION JOINTS OR ANTICIPATED BUILDING MOVEMENT.
 - 1.4. WHEN FLEECEBACK MEMBRANE IS INSTALLED DIRECTLY OVER AN EXISTING SINGLE-PLY ROOF.
2. SPLICES SHALL BE COMPLETED USING MINIMUM 3" (7.5cm) WIDE SecurTAPE/ PRIMER WITH EPDM MEMBRANE AND MINIMUM 1-1/2" (4cm) HOT AIR WELD WITH TPO/PVC/KEE HP. EPDM MEMBRANE SPLICES SHALL INCORPORATE 6" (15cm) WIDE SECURTAPE FOR PROJECTS WITH 25 AND 30-YEAR WARRANTIES.
3. APPROXIMATELY 1/8" (0.5cm) DIAMETER BEAD OF CUT-EDGE SEALANT IS REQUIRED ON CUT EDGES OF REINFORCED TPO MEMBRANE.
4. WHEN USING 60 OR 80-MIL REINFORCED THERMOPLASTIC MEMBRANE FLASHING, APPLY A 4-1/2" (11cm) DIAMETER THERMOPLASTIC "T-JOINT" COVER AT ALL FIELD SPLICE INTERSECTIONS.
5. ALL EPDM SPLICE INTERSECTIONS [REFER TO FB-2 DETAILS](#).

	<p>PARAPET/CURB WITH SEPARATE MEMBRANE – FULL COVERAGE</p> <p>MAXIMUM WARRANTY: 30 YEARS</p>	<p>DETAIL NO.</p> <p>FB-12A.1A</p> <p>FLEECEBACK ADHERED</p>
--	--	---