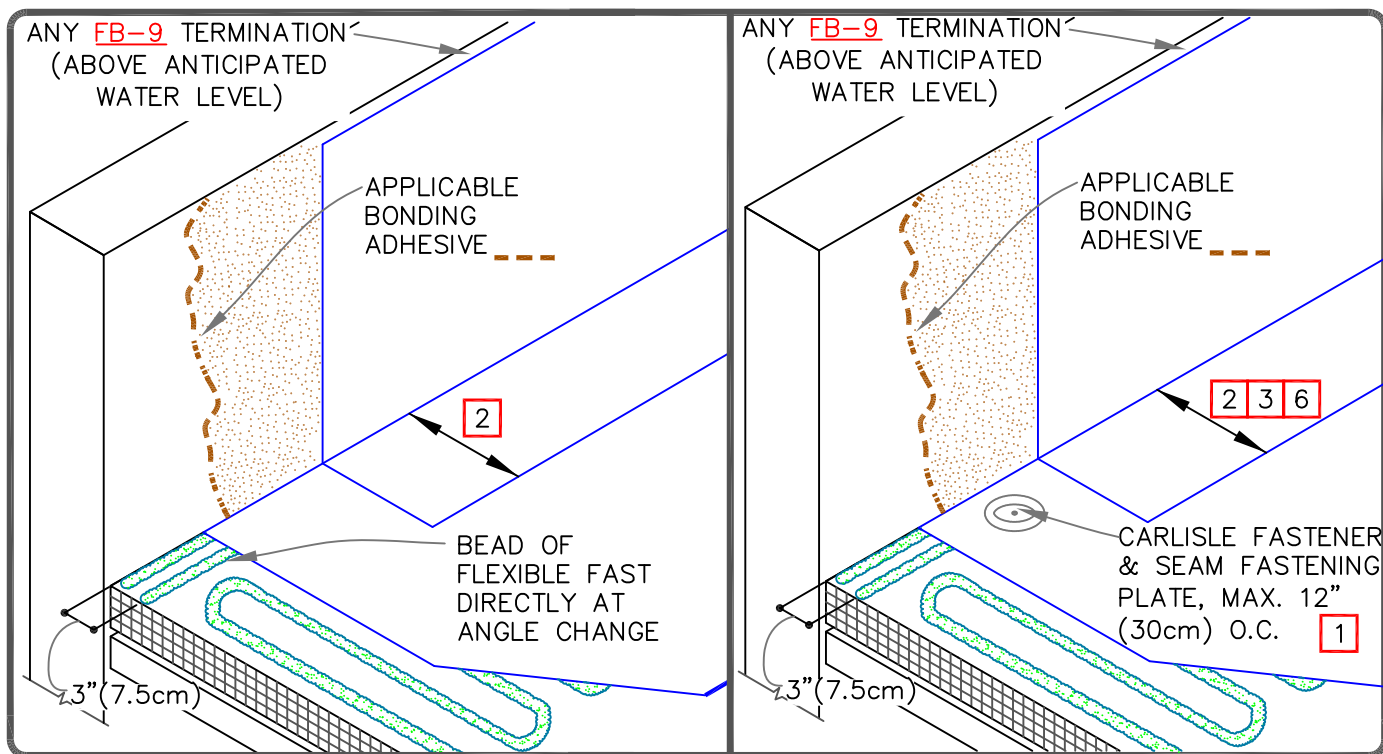


CAUTION

REFER TO [DETAIL FB-12C](#) WHEN USING AQUA BASE 120 ADHESIVE OR HYDROBOND.

## NOTES:

1. MECHANICALLY FASTENED BASE SECUREMENT IS REQUIRED WHEN ANY ONE OF THE FOLLOWING MAY OCCUR:
  - 1.1. SPECIFIED WARRANTIES GREATER THAN 20-YEARS.
  - 1.2. WARRANTY WIND SPEEDS GREATER THAN 90MPH.
  - 1.3. PROJECTS WITH CONTROL OR EXPANSION JOINTS OR ANTICIPATED BUILDING MOVEMENT.
  - 1.4. WHEN FLEECEBACK MEMBRANE IS INSTALLED DIRECTLY OVER AN EXISTING SINGLE-PLY ROOF.
2. SPLICES SHALL BE COMPLETED USING MINIMUM 3" (7.5cm) WIDE SecurTAPE/ PRIMER WITH EPDM MEMBRANE AND MINIMUM 1-1/2" (4cm) HOT AIR WELD WITH TPO/PVC/KEE HP.
3. EPDM MEMBRANE SPLICES SHALL INCORPORATE 6" (15cm) WIDE SECURTAPE FOR PROJECTS WITH 25 AND 30-YEAR WARRANTIES.
4. APPROXIMATELY 1/8" (0.5cm) DIAMETER BEAD OF CUT-EDGE SEALANT IS REQUIRED ON CUT EDGES OF REINFORCED TPO MEMBRANE.
5. WHEN USING 60 OR 80-MIL REINFORCED THERMOPLASTIC MEMBRANE FLASHING, APPLY A 4-1/2" (11cm) DIAMETER THERMOPLASTIC "T-JOINT" COVER AT ALL FIELD SPICE INTERSECTIONS.
6. 3" AND 6" FIELD APPLIED TAPE MUST BE OUTSIDE PLATES.
7. ALL EPDM SPICE INTERSECTIONS [REFER TO FB-2 DETAILS.](#)

	PARAPET/CURB WITH SEPARATE MEMBRANE – BEAD APPLIED  MAXIMUM WARRANTY: 30 YEARS	<div style="display: flex; align-items: center;"> <div> <p>DETAIL NO.</p> <p><b>FB-12A.1B</b></p> <p>FLEECEBACK ADHERED</p> </div> </div>
--	--	---